

Winterbourne & Frampton *Matters*



October/November 2025

Telephone 01454 300 900



Local family embark on an epic adventure to raise funds Breast Cancer Now

Bundy & Bond

Independent Estate Agents

01454 540 200

www.bundyandbond.co.uk
info@bundyandbond.co.uk

With high standards of service and excellent customer care
See our 5* Google reviews!



Tel: 0117 239 9683

	SERVICING from	£139.00
	MOT TESTING	£54.85
	TYRES from	£59.00
	BRAKES from	£159.00
	A/C REGAS from	£79.00

www.LCMautomotive.co.uk

LCM AUTOMOTIVE

Unit 4 Fairway Industrial Centre,
Golf Course Lane,
Filton, Bristol
BS34 7QS

Winterbourne & Frampton Matters is delivered to 6,500 homes across Winterbourne, Winterbourne Down, Frampton Cotterell and Coalpit Heath

yate Kitchen company Ltd.
www.yatekitchen.co.uk

Supply only **OR** Complete Installation Package

PRICE BETTER PROMISE

Customer Reviews

45% OFF

SALE £1158 WAS £2107

8 UNIT KITCHEN Shaker

45% OFF

SALE £1455 WAS £2646

8 UNIT KITCHEN Handleless

EXAMPLE PRICE FOR 8 COMPLETE UNITS ONLY - PLEASE ASK FOR MORE DETAILS

SHOWROOM ADDRESS:
Unit 1, Badminton Road Trading Estate, Yate, BS37 5NS
01454 311100 Email: yatekitchen.co@outlook.com
Open: Mon-Fri 9-5pm **FREE PARKING**




Dear Residents,

Welcome to the autumn edition of your community magazine, we are pleased to share with you details of local events and activities that will be sure to spread some seasonal cheer!

Frampton Cotterell Parish Council welcome local residents to get creative and build a scarecrow on the theme of Rock & Pop Legends! This wonderful trail will take place from 16th–30th October. They are also inviting people to volunteer for their Help Hedgehogs Hibernate Event over half-term.

Winterbourne Medieval Barn has a whole host of events lined up, from Halloween crafts to live music, cider tasting to mosaic workshops and much more!

Looking ahead a little, The Floral Friends of Frampton invite you to their Autumn Fair on Saturday 1st November. There will be refreshments for sale, craft and activities for kids, plus a raffle. All proceeds go to keeping the village in beautiful bloom for every season.

We enjoyed catching up with local resident Frederick Hopkins, who shared with us his family's summer adventure, when he cycled the 933 miles from John O' Groats to Lands End, with his wife and daughter in the support vehicle. The challenge was embarked on to raise funds for Breast Cancer Now, a charity that has supported his family so brilliantly.

All this, as well as updates from the local WIs, Fromside Benefice, Winterbourne Library, Hambrook Sports Club, the Village Diary and more!

If you are a business looking to promote your services across the local area in 2025 to 2026, do get in touch with us and we will be happy to help. Deadline for the next edition is 7th November 2025.

When you make contact with our advertisers, please do mention the magazine, thank you.

DON'T FORGET YOU CAN KEEP UP WITH EACH EDITION OF YOUR FAVOURITE COMMUNITY MAGAZINE VIA www.mattermagazines.co.uk

community@mattersmagazines.co.uk 01454 300900 Kerry & Jaci X



01454 540 200

www.bundyandbond.co.uk

Celebrating 7 Successful Years in Business!



Our office in Bounceval Mews, Chipping Sodbury

Offering high levels of service and excellent customer care
More 5* Google reviews than any other agent in the local area
Free no obligation valuations
Knowledgeable team with over 100 years combined experience
Free professional photography for all properties
Successfully selling properties of all values in a 15 mile radius of Chipping Sodbury

01454 540 200 info@bundyandbond.co.uk www.bundyandbond.co.uk



From left: Emma, Geoff, Georgia and Maggie
Front: Tina and Mary. The Sales Team at Bundy and Bond

Helping you remain independent
in your own home



Our local care team can help you or your loved one live comfortably and safely at home.

In 2015 My Homecare introduced our person-centred style of caring across the whole of the country. We have an established branch in Bradley Stoke, covering the whole Bristol area, which has fully trained, DBS checked and dedicated carers.

We help people who either through illness or injury, require assistance to maintain their well-being, whilst continuing to live in their own home and neighbourhood. We provide a range of care services including: Personal care and support around the home; specialist care services including 24 hour live-in care, palliative care, supported living and outreach.

My Homecare's compassionate and hardworking care team have a clear goal to maintain our first class reputation for providing high quality care.

We can help with privately-funded care or local authority and NHS commissioned support.



- Care at Home and Support
- Live in Care • Meal Provision
- Befriending Service
- Personal Care • Cleaning
- Waking Nights

- Short or long visits
- Daily or weekly
- Trained and DBS checked staff
- Consistent carers
- Consistent times

0117 440 6397

Unit 9, The Courtyard, Bradley Stoke, BS32 4NQ

E: bristol@myhomecare.co.uk W: bristol.myhomecare.co.uk

Crossbow Singers' Golden Celebration Concerts

Report by Louise Lewis and Anne Angus

This summer marked a truly golden milestone for the Crossbow Singers - our 50th anniversary concerts, and what a celebration they were!

We are so grateful to our wonderful audiences who joined us and made the concerts feel so special. Together we enjoyed a joyful look back over the past five decades, with a programme chosen by choir members. The music included old favourites such as Moon River and Take Me Home, Country Roads, alongside a rousing medley from Les Misérables. There was something for everyone, with plenty of singalongs and moments where the choir's talents shone through in full.

A real highlight was stepping into a new technological age with our brand-new interactive screen. Photos from across the years brought back fond memories, while on-screen lyrics made the singalongs even more fun. A big thank you to Eric Bray for organising the purchase and safe installation of the wall-mounted screen - it will also be a brilliant resource for other community groups using Crossbow House Hall.

We were delighted to welcome guest performers Chris Parker and Jake Lewis (grandsons of choir members) along with their friend Ali Rice. Their lively set - featuring songs from The Beatles, Billy Joel, and The Monkees - was a huge hit with the audience.

Our very own brilliant pianist, Anthony Davies, wowed the hall with a solo performance that even had the audience joining in, ping-ponging along to the music!

As always, the fabulous Rosie Williams was our compere. With her anecdotes and fun Crossbow Singers facts, she kept us all entertained. Rosie even revisited a poem she first shared 15 years ago when she began her role - a lovely touch. Thank you, Rosie, for bringing your sparkle once again!

Thanks to the generous audience contributions to the end of concert bucket collections we were able to make several charitable donations: £500 to Emmanus Homeless, £300 to Warmley wheelers and £300 to Frampton friends, the dementia charity.

And of course, our deepest thanks go to our inspirational Musical Director, Carolyn Dutton. Not only did she guide us to perform at our very best, but she also gave us a spectacular finale - complete with confetti cannons and balloons bouncing around the audience. It was a truly golden ending to our Golden Anniversary Year.

Here's to the next 50 years of music and memories!

The Crossbow singers are back rehearsing after the Summer break and will be singing at care homes, weddings and community events as we swing into autumn.

Inset photo shows Chris Parker in the foreground with Anthony Davies in the background



clover
ovensclean

Clover Ovensclean will clean your oven, range, hob, extractor or Aga using a non-caustic, fume free, eco-friendly system

Call Heath on 07943 870400
www.cloverovensclean.co.uk

Professional Oven Cleaning Services

October – November at Winterbourne Medieval Barn



Talk

Filton in Space: 65 Years and Counting – Tuesday 7th October, 7pm – The British Aircraft Company at Filton entered the 'space race' in 1956, providing part of the first British rocket to reach space in November 1957, just a few weeks after Sputnik 1. The space business continued in Filton until 1999 in the hands of British Aerospace and Matra Marconi Space. In that time over 60 spacecraft were launched with Filton designed and built hardware on board. Terry Ransome tells the story. Tickets are £7.50 and the talk can also be watched live on Zoom.

Participatory Activities

Mosaics course – Friday mornings, 10th, 17th, 24th October, 10.30am – Decorate a small bistro table with your own mosaic design in this three-day course on successive Friday mornings. Full details are on the website and Ticketsource.

Cider Tasting – Friday 17 October, 7pm – David Lindgren from Bushell+Peck has many years experience in managing his own orchards and producing his own cider and perry. He guides you through the aromas and flavours of a range of ciders and perry in this informative but fun workshop. Strictly over 18s only. Tickets £20, includes bread and cheese to go with the ciders.

Wine Tasting – Saturday 8 November, 7pm – With 25 years' experience in the wine trade, Ian Redfearn makes the ideal host for this evening, guiding you through a varied range of wines and port from Spain and Portugal, with an eye to the approaching festive season. He will give some background information on each wine, and welcome questions and comments in this enjoyable workshop. Strictly over 18s only. Tickets include a selection of cheese and biscuits to go with your wines.

Halloween Family Craft Morning – Thursday 30 October, 10.30am – Join volunteers in the Barn to make your own spooky junk models and anything

else you like! Ideas, materials, and plenty of space are provided, but this is not a guided workshop. Come along any time between 10.30am and 12.30pm. An adult must remain with their children. Young crafters get squash and a biscuit, and a treat for completing the Halloween Scavenger Hunt. Aimed at age 5+ but all are welcome. Book your space online.

Willow Reindeer Workshop – Saturday 1st November – Learn to weave your own endearing sculpture in this one day workshop.

Festive Fused Glass Workshops – Thursday 13th or Monday 24th November – Make your own colourful miniature glass Christmas trees or wreaths, in a morning or afternoon session. No experience needed. Tuition and all materials provided.

Live Performance

Midwinter Revels – Sunday 30th November, 4.30pm – Chris Green and Sophie Matthews kick off the festive season in great style with carols, folk songs and tunes from Yuletides past. With a plethora of weird and wonderful instruments, lively music and GreenMatthews trademark wit and humour in the atmospheric Medieval Barn just as dusk falls, this will really get you in the festive mood! Tickets are selling fast. Free parking at the Barn. Bar available.

Event booking – All events at the Barn should be booked online at Ticketsource or via the Barn's website. If you need to book in person, contact the office (open part-time) to arrange a time to visit.

The Medieval Barn is fully accessible for wheelchairs. Free parking at the Barn for all events, and plenty of space for drop off / pick up and bicycles. A pop-up bar is open for all evening events.

www.winterbournebarn.org.uk

Facebook @winterbournemedievalbarn

Winterbourne Medieval Barn, Church Lane,
Winterbourne, BS36 1SE



KITCHEN
COFFEE
SOCIAL

BLACK SHEEP CELEBRATIONS

Available weekends and Monday to Friday after 7pm

At the Black Sheep, we have the perfect space. For those special birthday parties to family gatherings, we have a selection of freshly prepared dishes and drinks, perfect for any event.

Minimum spend £500

For further information on how we can help create your perfect party, please contact the events team
events@aztechotelbristol.co.uk

Black Sheep, Aztec West, Almondsbury, Bristol, BS32 4TS





News from the Floral Friends of Frampton

Well, can you remember how dry and hot it was this summer? Hard to believe now, isn't it? This change in the weather has perked up the grass and suddenly our gardens and open spaces look lush and green again.

We will be holding our **Autumn Fayre** on **Saturday, 1st November** at the **Brockridge Centre**. Last year we included lots more activities for children and this proved to be a great success, so please, put the date in your diary and come and join us. As always, there will be crafts, drinks, cakes and biscuits for sale, plus a really good raffle and all proceeds will go towards flowers, bulbs, compost and replacing our planters. There will be more information in our newsletter and on social media next month.

We'll soon be meeting to decide on our planting schemes for autumn and winter, and where we can place any new planters and possibly move a couple that are not really as visible as we'd like. Also, it won't be long before we're thinking about

planting bulbs for a really good show in early spring 2026. We would love to increase the number of displays, so you may see us in October busy scattering bulbs and making holes – after all the recent rain, the ground may be a bit softer by then! Please let us know if you'd like to help with this. Just an hour of your time to plant bulbs would be fantastic – there would be no commitment to join us long term; just wear sturdy shoes and if possible bring a bulb planter or spade, although we will provide tools, if needed. We'll put information on newsletters and social media nearer the time. You'll be made very welcome and actually, it's a lot of fun!

Support Floral Friends – You would be warmly welcomed as a volunteer so, if you can donate time, money or plants please do get in touch.

Email: floralfriendsofframpton@gmail.com
<http://ffframpton.wixsite.com/frampton-cotterell>



EARTHWORKSUK

GRABS • TIPPERS • AGGREGATES • TOPSOIL • SKIPS



GRAB HIRE



TIPPER HIRE



AGGREGATES &
TOPSOIL



SKIP HIRE

Earthworks UK are a local company that covers all aspects from waste removal to aggregate supplies. We pride ourselves on competitive pricing and giving a reliable service. If you haven't used us before give us a go, you'll be pleasantly surprised!



Enquire today. Tel: 01179 828265 | WhatsApp: 07782 472727
 Email: info@earthworksuk.co.uk | Visit: earthworksuk.co.uk



THE CHRISTMAS SCHOONER A New Musical

Winterbourne
Musical Theatre

is celebrating its 50th year of bringing high quality drama productions to the local community at an affordable price. Following the sold-out run of Shrek in May, the group is now working hard on The Christmas Schooner which will be staged at WADCA Community Centre from **26-29th November 2025**. Tickets cost £13 and are available from Ticketsource now online, or by ringing 0333 666 3366.

The Christmas Schooner tells the story of the German immigrants to America 120 years ago, who shipped pine trees on the Great Lakes and brought their tradition of Christmas trees and wreaths to the people of Chicago. Based on the experiences of a real family and a real ship, the show is full of hummable tunes, humour and heartache, spreading the message of peace and love at this special time of year. The Musical was written by Julie Shannon, based on the book by John Reeger, and this amateur production is presented by arrangement with Musical Theatre International.

www.winterbournemusical.co.uk

News from Coalpit Heath WI

In August, we used a gap in the programme to make new name badges (pictured right) for ourselves. Members were able to choose coloured felt, threads, buttons, and other small decorative items to decorate their badge. Items were sewn or glued on in a variety of ways and the badges will be finished with names shortly.



John Robinson, a retired Orthodontist and Magistrate, was our September speaker. He talked about historical murders where convictions were given without the body being found. He referenced the case of Mrs McKay, who was kidnapped in 1969 after being mistaken for Rupert Murdoch's wife, Anna. Her body was never found but it was one of the earliest case of a trial and conviction secured for murder without the presence of a body. He also mentioned the Dingo murder trial, where the mother was convicted and spent three years in jail before the convictions were overturned. Without a body circumstantial and forensic evidence must prove the victim is deceased and that the defendant is responsible. A very interesting talk.

Thanks go to all the members who supported the raffle, either by bringing items or buying tickets, nearly £100 was raised.

We will shortly be reattaching all of the poppies we have to some new netting, they needed to be washed after last autumn's wet and windy weather. Dates have been planned so that the display will be ready for November.

If our meetings sound like something you would enjoy, why not come along and meet us, you would be most welcome. **We meet on the first Wednesday of each month in St Saviour's church hall at 7.45pm.** Programme updates for the year will be found @WICoalpitHeath on Facebook or @coalpitheathwi on Instagram. Visitors £5.

Future meetings:

Oct 1st – Rob Jones, Educating a Death Squad

Nov 5th – AGM, Naomi Johns Birds of Prey

Dec 3rd – Christmas Crafts

Dec 10th – Christmas Carols in St Saviour's church

Turn Back the Clock Without Botox - Discover Focus Fusion in Winterbourne

They say you can't have it all... but when it comes to skin, **The Restore Clinic** in Winterbourne begs to differ. Enter **Focus Fusion** - the latest, award-winning treatment that's making wrinkles quiver and jawlines sharpen.

So, what is it? Think of it as a **two-in-one superhero** for your skin. By combining **microneedling with radio frequency and highintensity focused ultrasound (HiFU)**, Focus Fusion works on every layer of your skin - from surface texture right down to deep tissue.

It helps smooth fine lines, lift sagging areas, tighten pores, and boost collagen like your skin's had a triple shot of espresso.

Whether you're tired of crepey skin, dreaming of a sharper jawline, or just want to take back the years, Focus Fusion delivers results that last.

No fillers. No surgery. No downtime. Just visible results that keep improving with time.



Because ageing well is good - but ageing fabulously is better

November Launch Offer (worth £140)

All bookings include **FREE Alumier MD Peel, LED Light Therapy and home aftercarekit.**

Contact 07947 864036 for more info

The Restore Clinic, Winterbourne

[www.therestoreclinic.co.uk](http://www therestoreclinic.co.uk)

@the_restore_clinic_

Facebook/therestoreclinic



*The Lady
Decorator*

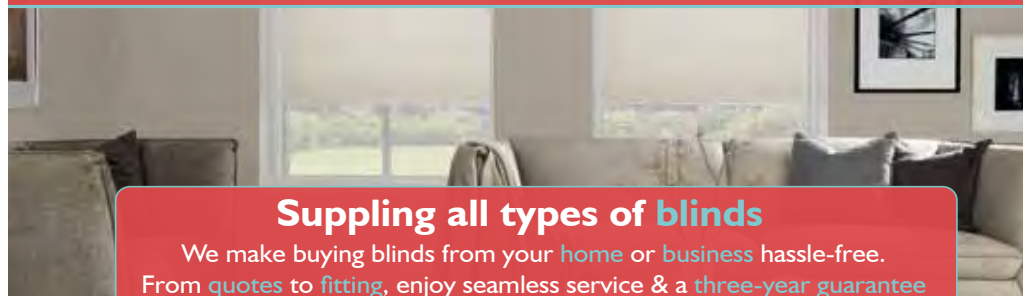
A reliable decorator who can add a woman's touch to a professional service.

Based in Winterbourne and with several years' experience, I can help with all your painting and decorating requirements for jobs both small and large.

Please contact Alex on
07919 554658 or
alexcrice@hotmail.com



**NORTHAVON
BLINDS**



Supplying all types of blinds

We make buying blinds from your home or business hassle-free. From quotes to fitting, enjoy seamless service & a three-year guarantee for your peace of mind.

01454 273133

sales@northavonblinds.co.uk

northavonblinds.co.uk



AZTEC
HOTEL & SPA

Strictly glitter ball

Friday 7th November from 7.15pm - 12.00am

Join us for a fabulous night of glitz and glamour with our 'Strictly' inspired evening. Shimmy down in your sequins and suits and show off your best moves! Includes three course dinner, entertainment and DJ.

£35 per person

Scan the QR code or pop to reception to book.



01454 201090 | events@aztechotelbristol.co.uk | aztechotelbristol.co.uk

The Hopkins Summer adventure 2025 – raising funds for Breast Cancer Now

This month we spoke with Coalpit Heath resident, Frederick Hopkins, who has kindly shared his family's epic summer adventure when he cycled the 933 miles from John O' Groats to Lands End!

The journey, over twelve legs, was a true family affair, with his wife Gem and daughter Darcy driving the support vehicle with him all the way.

This story began in September 2023 when Gem was diagnosed with breast cancer and their world turned upside down. Gem's journey has been difficult. Chemotherapy, mastectomy, central lymph node clearance followed by a full lymph node clearance, Radiotherapy and 10 years of medication.

Now, a year on from Gem receiving treatment in hospital, Frederick wanted to show his appreciation to Breast Cancer Now, who supported Gem and their family so magnificently throughout. Frederick also felt Gem deserved something big, to mark the resilience and courage she fought cancer with, all while continuing to be the best mum and role model to Darcy.

Gem, Darcy & Frederick at John O' Groats End Signpost



Frederick shares his thoughts on the challenge, "Whenever it got tough, I just had to think, my wife Gem had it worse. It was emotional enough, but on my first day, I started receiving messages of support from friends and family that she had co-ordinated. What a woman!

"Spiritual wellbeing means different things to different people, but for me, it's about doing something bigger than yourself. A sense of wellbeing by giving back. It's good to be good, and as a bare minimum, I hope we have been able to show Darcy this.

"I've been overwhelmed by the support our personal and professional networks have given. It hits you right in the feels. What an experience. An adventure our little family will never forget."

The Hopkins have raised over £10,000 at time of writing and would be grateful to receive further donations. Frederick adds, "Every donation, no matter how big or small, will contribute to the life-changing work this charity does, please show your support if you can."

Visit: www.justgiving.com/page/frederick-hopkins-jogle

If you would like to know more about Gem's story, you can follow her on Instagram at:

www.instagram.com/littlegem_andthebigc

KUMON
MATHS ENGLISH
Free Registration
16 September - 31 October

KUMON OPENS A WORLD OF POSSIBILITIES

Bradley Stoke Study Centre
07808 720 208
Unit 4, First Floor,
The Willow Brook Centre, BS32 8EF
kumon.co.uk

This centre is Ofsted Registered

Terms and conditions apply. Fees vary. Participating centres only. Please refer to your local study centre. Subject to availability.

Don't forget to mention Winterbourne & Frampton Matters when replying to ads! 13

News from Hambrook Sports Club

September marks the end of **Hambrook's 2025 cricket season**, and what a season it was! Our youth tournament and barbecue celebrated the wonderful efforts of our players, who all showed excellent progress and sportsmanship this season. Now our volunteer coaches can have a well-earned rest... well, at least until Winter Nets starts up.

Autumn sees **Hambrook football club** return to Whiteshill Common, with Hambrook & Brimsham United playing in the Bristol Premier Combination League, and Hambrook Sunday and Hambrook United playing in the Premier Sunday League. There's always room for more players (and supporters) if you're looking for a side!

As the nights draw in, why not while away the evenings with a game of **skittles**, played every Monday, Wednesday, and Thursday from 7:30 pm. Shout out to our home teams, the Flyers, Sinners, Outcasts, Filton Wanderers, and last but not least, Hambrook Sports. Cards lover? Our **crib nights** are on Thursdays, too.

Pilates focuses on core strength and flexibility – both of which are key for maintaining good health. We consider it an essential, and not just for sporting types! Our Wednesday pilates class at 8 pm is led by Abigail F Schmidt, just £8 for club members. Why not get in touch to try a free class? We're looking to increase the class schedule this winter, if interest is high enough.

We're looking forward to hosting Hambrook Primary School's PTA Halloween Disco this October. **If you're planning a party**, we could be just what you need: we can host up to 100 people, with two bars, a skittle alley option, and plenty of parking – all for the extremely competitive price of £70 for all-day hire. Rates for shorter hire periods are negotiable; please get in touch at officialhambrooksportsclub@gmail.com.

We're planning special one-off events for Christmas; find out more at our newly relaunched website www.hambrooksportsclub.co.uk.



Nat Austin
Permanent Cosmetics
And Beauty

Expert Beauty & Aesthetics

Located at Crossley Farm Business Park, Winterbourne

Offering a full suite of services from semi-permanent makeup to advanced aesthetic treatments, this clinic is the perfect one-stop spot for anyone looking to enhance their natural beauty or rejuvenate their skin with confidence.

Find out more or book online:

• nataustinspmu.co.uk • aestheticsbylucille.co.uk
T: 07854 929140 E: natashaastuin1000@yahoo.com



Walk With Us

Walk Mates Winterbourne

Weekly social walking group.
Every Wednesday at 7pm from The Greenfields
Centre Winterbourne, BS36 1NJ.
1hr session, steady pace, mixed terrain in
Winterbourne, W. Down, Frampton, Hambrook area.
Fitness : able to cover 2.5 - 3 miles in an hour.
£5 monthly subs



Women Only Adventure Walks



Meet one Thursday a month (10am - 2pm) covering routes in South Glos, Bristol, B&NES, Somerset and Monmouthshire. Mixed off road terrain (inc stiles)
Fitness : able to walk 6 - 8 miles in 3 - 4 hours whilst chatting and enjoying our building community of female champions. Always involves BYO flask & flapjack or picnic. PAYG £5 per walk

Tip the Balance Wellbeing Nordic Walks

Weekly wellbeing walks using Nordic Poles.
Tuesdays at 10am in South Glos locations.
1hr walk covering 3+ miles, followed by tea/coffee & chat. Mixed terrain walking.
Learn to Nordic Walk courses available (contact us for dates), then walk with us regularly thereafter.
LTNW courses (4hrs) £50 then PAYG £8 per walk or discounted monthly membership available



Find us on Facebook or Contact us via the links on
www.linktr.ee/tipthebalance or Whatsapp / Call Becca on
07721 907780

QUALITY KITCHEN MAKEOVERS

by simply replacing the doors and worktops

DREAM DOORS®
NEW LIFE FOR OLD KITCHENS

FAMILY RUN
BUSINESS

BEFORE

AFTER

MODERN

CLASSIC

TRADITIONAL

CONTEMPORARY

- › Up to 50% less than a new fully fitted kitchen
- › Replacement kitchen doors
- › Cost effective made to measure solution
- › Worktops and appliances
- › Quick installation in 2-3 days by local professionals

11-12 The Promenade,
Gloucester Road,
Bristol, BS7 8AL

Call us now for a free estimate:

01179 443 223

Checkatrade.com 9.8/10
Where reputation matters

dreamdoors.co.uk

THE UK'S #1 KITCHEN MAKEOVER COMPANY

Why not learn Reiki or Reflexology for yourself?

with experienced holistic therapist Dawn Clode Lic MET Lic CR

As well offering holistic treatments, for many years local practitioner Dawn Clode has taught them too. She has developed courses for the "lay person" to enable them to have a better understanding of holistic therapies, for them to use safely at home on themselves, their families and friends.

Dawn understands how many of us would prefer to try natural, holistic practices to sooth discomfort such as stomach or head aches and learn how to calm stress, anxiety and improve sleep. You can take courses with Dawn, that will equip you with the knowledge to treat yourself, family and friends.

If you are a professional therapist looking to extend the treatments you can offer, Dawn also runs courses that will enable you to achieve qualifications as a certified practitioner.

Two popular courses are Reiki and Reflexology.

Dawn shares, "I teach Reiki levels 1, 2 and Masters. This gentle practice is wonderful to relieve stress, worries and help your body re-set. It is soothing for the practitioner as well as the person receiving the treatment. To help counterbalance the stress of busy lives this is a lovely therapy to share with family and friends and it is great to aid mindfulness."

She went on to say, "With Reflexology it never ceases to amaze me how much we can learn about our body from our feet! We can assist the healing of different kind of ailments from headaches to skin conditions, stomach complaints to achy joints. This is a fascinating and effective treatment to both teach and deliver."

Holistic teacher Dawn

Course info

Day courses take place over the weekend and start from £150 per day – which includes lunch and work books. All sessions are located at Dawn's holistic therapy space in Little Stoke.

Whether you are a complete beginner with an interest in healing, or a professional looking to gain further qualifications, Dawn can tailor the courses for your needs.

To find out more and to book in, please contact Dawn. Call: **0795 1099 491** or visit:

www.life-and-soul-empowerment.co.uk

HARBORD
OPTICIANS

Welcome to Mike Harbord Opticians - a family practice in Winterbourne Village.

Friendly, personal service and advice.

Full Eye Examinations and Retinal photography.

Qualified Optometrists and Dispensing Opticians.

A wide range of spectacles from NHS to handmade and bespoke frames.

Call today for an appointment

01454 775530

3 WHITEGATES, FLAXPITS LANE, WINTERBOURNE BS36 1JX

Back to School
Treat


BEAUTY PLUS
By Myriam


Treat yourself to a manicure
and receive a
**FREE moisturising wax
hand treatment
(worth £11)***


*Does not include gel varnish

For more information, call us on:
01454 776938 / 078546 08889
147 CHURCH ROAD FRAMPTON COTTERELL BS36 2JX

NORTH BRISTOL CONTAINER STORAGE

 nbcstorage.co.uk

 01179 698501

 Gloucester Road
Almondsbury
BS32 4HY



20 X 8 x 8ft = 160 sq ft

6 months - £750 inc vat
*£28.85 per week

6 MONTHLY RENTAL AVAILABLE

An update from Clare Moody - Police & Crime Commissioner

'Your Streets, My Priority' is a coordinated programme of action I'm overseeing to enhance neighbourhood policing and create safer, more vibrant town centres and high streets across the region.

You've told me you want safer streets and more visible policing, and I'm doing it. I've listened to your concerns about anti-social behaviour, retail crime, and criminality in town centres. I'm working with the Chief Constable to put more officers where they are needed, tackling crime in high streets and areas you care about, because you should feel safe in your high street.

Over the summer, I have visited many places and have seen and heard the impact this work is having on people and their high streets.

Below are just a few of the policing activities that have been making a difference across South Gloucestershire:

- Various Neighbourhood Policing teams joined forces with The Roads Policing Team, Special Constabulary, and the DVSA to conduct traffic patrols and checks throughout August around Easter Compton, Bradley Stoke, Winterborne Road, Yate, and Chipping Sodbury. Numerous offences were dealt with including one vehicle being found with multiple defects, no insurance, and the driver was arrested for drug driving and possession of cannabis. Another driver attempted to evade police - but the vehicle was successfully located and seized for no insurance.
- I joined South Gloucestershire Council and South Gloucestershire Neighbourhood Policing Team on the Bristol and Bath Railway Path, carrying out highly visible patrols and engaging with users of the path about their feelings of safety.
- The deployment of plainclothes officers at The Mall, Cribbs Causeway, as part of Project Servator - which is all about unpredictable, highly visible police deployments designed to disrupt criminal activity while reassuring the public. You'll see a mix of uniformed and plain clothes officers, working together with security staff and the local community to keep everyone safe.
- In addition to all the policing activity that has continued throughout the summer, there have also been community stalls and pop-ups happening, so our police and partners can hear from people about any issues they are facing.

If you'd like more information about the work happening under 'Your Streets, My Priority', please visit Your Streets, My Priority - OPCC for Avon and Somerset.



On 9th September I held a public forum at Chipping Sodbury Golf Club, offering members of the public the opportunity to engage directly with me and senior officers from the Local Policing Team. I am here to listen and represent local communities, so it was great to see so many people engaged and sharing their views.

Topics discussed included concerns around anti-social behaviour (ASB) and issues around motorcycle theft, resulting in a follow-up meeting dedicated to bike theft in South Gloucestershire.

To keep up to date with what's happening as part of the "Your Streets, My Priority", visit my website and social media pages.

www.avonandsomerset-pcc.gov.uk



Men's Social Afternoons

1PM - 3PM
Every Wednesday
The Brockeridge Centre, BS36 2LQ

Men of all ages welcome at our free Men's Social Afternoons! Join us for:

- card games • dominoes • tea & coffee
- books • newspapers • pool • table tennis

or simply drop in for a chat

offices@framptoncatterell-pc.gov.uk 01454 864442
www.framptoncatterell-pc.gov.uk/mens-social-afternoons

What's on at Winterbourne library



Children's FREE Activities

Rhymetime – Every Wednesday, 10am (term time only)

Storytime – Every Friday, 10am (term time only)

Lego Club – 4 weekly on a Saturday, 10am – 11am. Story and a themed build, children must be accompanied by an adult. Suitable for 4+ years. Next Sessions 11th October and 8th November.

Autumn Half Term Children's Activity – Join us on Friday 31st October from 10.30am, for our children's free crafts, or collect your craft bag to make at home. Suitable for 4–11 years.

Adult activities

Adult craft group – Fortnightly on Saturday, 10am–12pm – Join our friendly group to do your own craft and chat, refreshments by donation – Next dates 4th and 18th October, 1st and 15th November.

Coffee Morning – Every Wednesday, 11am–12pm. Join us for a coffee, chat and bring a craft too.

Adult Games Club – Fortnightly on Wednesday, 2–4pm, with refreshments by donation. Come along on your own or with a friend to play a variety of board games and make new friends. Next dates 8th and 22nd October.

Computer Classes – Thursday (term time only) enrolment required with SGS College. For further information please contact Cindy on: 0117 909 2296 cindy.corbett@sgscol.ac.uk.

Digital Champion – Do you need help getting online? Are you stuck using your iPad or phone? Book your slot with our friendly volunteer who runs a one-to-one hourly session on a Friday morning. See staff for details.

Opening hours – Tuesday, 10am–3pm. Wednesday & Friday, 10am–5pm. Saturday, 9.30am–12.30pm.

Open Access – This is our system that lets you into the library when we are not open with staff between 8am–7.30pm, 7 days a week using your library card. Library members complete a quick induction held at Winterbourne library, 3pm Wednesday and 10am Saturday, to register to use Open Access. You then can use our WiFi, Computers, printing, collect reservations, issue and return books.

Email: winterbourne.library@southglos.gov.uk

Telephone: 01454 868006

www.southglos.gov.uk/libraries

 South Gloucestershire Libraries

 southgloslibs

News from Winterbourne Evening WI

On a very wet and windy September evening we met at the Greenfield Centre. As our President was away, Carol Shields led the meeting.

The business news was quickly completed. The AFWI Annual General Meeting will be at BAWA and Susan Marshfield will be our delegate. There will be a Public Affairs Day at Chipping Sodbury in November and the annual Carol Service will be held at St. Mary's Church, Thornbury. We were reminded of our birthday lunch next month and we heard that, Pat Dukes Tea Party raised £134.

After the raffle, Carol introduced Philip Dowding for a musical evening. Philip, who is a keen keyboard and organ player comes from Malmesbury and he regularly entertains in various venues, including Care Homes and Day Centres, in Wiltshire and South Gloucestershire. We had a varied programme ranging from Russian folk songs to musicals and hits from the 60s and 70s. It was reminiscent of the theatre organs. We were encouraged to join in and after a break for tea and cakes, we finished with a rousing rendition of Jerusalem. Carol thanked Philip for an enjoyable evening.

Our next meeting will be on October 9th, at the Greenfield Centre, Park Avenue, Winterbourne, BS36 1NJ. Visitors are always welcome.



Pinewood Roofing & Building

Pinewood Roofing and Building is locally based and proud to serve the Bristol area. We offer a fast and responsive roof repair service including emergency roof repairs. Our services extend into chimney repair and replacement, as well as the installation of gutters and fascias.

Older properties often require some roofing care and attention; we can help keep your home safe and dry. Extensions are popular in this area too; as flat roof experts, this style of roofing can offer a cost-effective solution for the extended new space.

At Pinewood, we are not just passionate about protecting your home, we're also committed to protecting our planet. We offer a range of eco-friendly roofing options that are as kind to the environment as they are to your wallet. Their energy-efficient materials can help reduce your carbon footprint and lower your energy bills, all while providing superior protection for your home.

For more information on any of the above or to book a free quote, please get in touch via the contact details below.



Our team completed the full roof renovation pictured above – including new roof rafters, slide sheets, new felt, new band and a brand-new box valley – all designed to provide ultimate protection and durability for our clients' homes. Our expert craftsmanship ensures that every element of your roof is perfectly installed, offering superior strength and long-lasting results.

Why choose Pinewood Roofing & Building?

1. **We are locally based** and proud to serve the Bristol area with quality roofing services.
2. **We are dependable.** We deliver a reliable service you can depend on, which means we turn up when we say we will and complete the work within agreed time scales (weather depending).
3. **All work guaranteed.** All our work is carried out to the highest standards using quality materials and is fully guaranteed.

Get in touch now, for a free, no-obligation quote

Call: 0117 450 4914

www.pinewoodroofingandbuilding.co.uk





It's Good to be Back!

by Kirsty Robson, Head teacher of St Michael's C of E Primary School, Winterbourne.

As we begin another academic year at St Michael's Primary, I have been reflecting on the achievements of our children last year. Their dedication and hard work have led to great outcomes, once again showing the potential within every child in our care.

Looking ahead, we have planned a range of opportunities and initiatives to continue developing our educational offer. It was the end of our first year working with eleven other schools as part of the Mosaic Partnership Trust. This collaboration marks an important step for our school, creating new opportunities for staff development and shared learning.

Our focus on reading and teaching and learning approaches has already made a noticeable difference in the classroom, helping to shape better learning experiences. Working with other schools in the trust has allowed us to share ideas and learn from colleagues who are equally committed to high standards.

We're also looking forward to a number of exciting events this term, including our much-loved Grandparents' Afternoon, which is always a highlight of the school calendar. Children will also have the chance to enjoy a trip to the panto at the Bristol Hippodrome, offering valuable cultural experiences beyond the classroom. We continue to offer a broad and balanced curriculum that includes music, PE, and the arts – ensuring that every child has the chance to explore their talents and develop as a whole person.

As we continue this journey with our partner schools, we remain committed to giving every child a strong and supportive education, helping them grow and reach their full potential. It is a privilege to lead our committed team at St Michael's and work with such fantastic children.

For anyone that would like to visit our school we have some open events for prospective parents of Reception children starting in September 2026. These will take place on Wednesday 8th October at 5pm and Wednesday 15th October at 9.15am. Alternatively, individual tours can be booked through the office on 01454 867105. www.stmichaelswinterbourne.co.uk.

**Here to help Winterbourne,
Coalpit Heath, Frampton Cotterell
and Westerleigh**



Do you need help with transport? Call Green Community Travel!

**Covering Coalpit Heath, Frampton Cotterell, Winterbourne, Yate and more,
including the hospitals.**

- Shopping, GP/Hospital and Dental Appointments, Hairdressers and much more
- Friendly team, accessible travel and discount for bus pass holders
- You can even book a regular slot with us, and should you need to cancel, just call us!

- Book in advance!

Call **01454 228 706**



admin@greencommunitytravel.co.uk

Sound Meditation

with Craig Rogerson from Soundworks

I founded Soundworks, my sound therapy practice, four years ago with a simple aim: to help others through sound. My main offerings include 1:1 sessions and group sound meditations - also known as sound baths. Using a range of sound tools and instruments, we create true moments of rest.

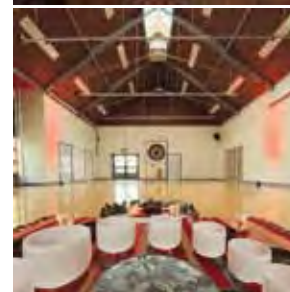
In a session, you'll experience anything from the grounding beats of worldly percussion, to the resonant frequencies of singing bowls, gongs, and a few other sonic treats. We use their audible qualities to tap into a phenomenon called brainwave entrainment - this allows us to access lower brainwave states. We also use their mechanical vibration that signals our parasympathetic system - our natural "rest and restore" mode. So it's not just what we *hear*, but also what we *feel*. These long, sustaining tones can carry us into a still, meditative state - a quiet place that many of us rarely get to visit.

When was the last time you truly took a moment for yourself?

Beautiful things happen when we really stop, and, when we add the aid of sound to that, I've witnessed real shifts in people. My mission is to create regular, accessible spaces for people to rest in sound, and I'd love to let more people know about these spaces.

We gather every month on a Sunday afternoon at Turnberries Community Centre in Thornbury. It's a grounding space - and it's open to everyone. You don't need to have any meditation experience. You don't even need a yoga mat as I always bring a few spares. All you need is the willingness to show up with an open mind, and let the sound do the rest.

Visit <https://welcometosoundworks.com/> for more information and to book in your session online. Use the coupon code WFM4 when booking to redeem a welcome discount.



CALLING ALL GIRLS

WE'RE RECRUITING

FRAMPTON COTTERELL RFC GIRLS SECTION

Improving cognitive skills.
Developing rugby based ability.
Holistic approach to player centred development.

PRE SEASON STARTS Tuesday 15 th July	FORFC School Road Frampton Cotterell BS36 2DA
---	---



We are a small, dedicated team who love to provide a high quality salon service

Salon 98 is open Tuesday – Friday and every other Saturday
(Beauty Studio closed on Wednesday)

Find us on:

@salon_98LTD @beautystudio98LTD

Salon 98 Ltd

5 Woodend Road, Coalpit Heath, BS36 2LN

01454 77 22 55

Email: info@salon98.co.uk

THORNBURY
Golf & Lodge

Join Us For Our Christmas Party Nights!

At **Thornbury Golf & Lodge**, we offer shared party nights with other festive party goers or private parties for up to 100 guests.



PARTY NIGHTS INCLUDE

- Delicious Three-Course Meal
- Glass of Prosecco on Arrival
- DJ & Disco Until 12.30am
- Table Magician & Festive Decorations

DATES

FRI 5TH DEC • SAT 6TH DEC
FRI 12TH DEC • SAT 13TH DEC
FRI 19TH DEC • SAT 20TH DEC

**ALL FOR JUST
£49.95 PER PERSON**



**SCAN THE QR CODE FOR
MORE INFORMATION OR
CONTACT US TO BOOK**

PHONE 01454 281 144
EMAIL info@thornburygc.co.uk

Santas on the Run returns!

A much-loved Christmas event – Santas on the Run, which will see people dressed as Father Christmas, elves and other festive characters, is being held on **7 December** in the grounds of Children's Hospice South West's (CHSW) hospice at Charlton Farm in Wraxall.

This is the third year the 2k festive run has been held in the beautiful grounds of Charlton Farm. Last year's event raised an incredible £15,000 for CHSW.

People are encouraged to arrive in festive fancy dress, with prizes on the day for the best dressed child, adult, pram and dog. Money raised from Santas on the Run will go towards offering care and support to local families who use CHSW's three hospices, including Charlton Farm.

Tickets are available to buy online at www.chsw.org.uk/event/santas-run-north-somerset-2025

Also included in the ticket price is half-price entry to Noah's Ark Zoo Farm on the weekend of the event for the ticket holder and up to four friends and family.

CHSW Events Fundraiser, Hollie Thorogood, said: "We can't wait to see all of Santa's little helpers at our Santas on the Run event this year and hope everyone can join us for another fun-filled day. We're delighted to hold the event at Charlton Farm for the third year and show people our amazing hospice."

All money raised from Santas on the Run will help CHSW to continue providing care to local children living with life-limiting conditions and their families. Participants are encouraged to raise £25 in sponsorship as an individual and £70 per family.

www.chsw.org.uk | 01275 866600



 **children's hospice
SOUTH WEST**
Registered Charity No. 1003314



TIME TO WRITE YOUR WILL?

You could write your Will **FREE OF CHARGE** with The Grand Appeal, the Bristol Children's Hospital Charity, and Simpson Solicitors.

Our free Will-writing service makes it easy to protect your loved ones while making an incredible impact.

Leave your legacy today. Help sick children tomorrow.



SCAN ME



IN PARTNERSHIP WITH
simpsonsolicitors

Ring your local office on
01454 322 722

and quote
"MATTERS MAGAZINE"

The Grand Appeal®. Registered charity 1043603. ©&™ Wallace & Gromit Ltd/Aardman Animations Ltd 2025. All rights reserved.

News from Frampton Cotterell Parish Council

Scarecrow Trail 2025

The ever-popular Frampton Cotterell Scarecrow Trail is back for spooky-season 2025. This year's theme, as voted for by the parish, is Rock & Pop Legends!

If you'd like to make a scarecrow or window display for this year's trail, you can sign up online via our website or by filling out a paper entry form available at The Bickeridge Centre. **The deadline to enter is 12pm, Friday 10th October.**

This year's Scarecrow Trail will take place from the **16th to the 30th of October**. Our official 2025 Scarecrow Trail Map will be available from the beginning of the trail period. You will be able to find the live digital map on our website or pick up your free print map from the Bickeridge Centre. Don't forget to vote for your favourite display – there will be prizes for the two with the most votes!

Local Nature Art Exhibition 2025

This year's Frampton Cotterell Climate & Nature Local Art Exhibition, at the end of August, proved to be as popular as ever! All created by local artists, the exhibits were both beautiful and inspiring.



During this year's exhibition week, we also held several fun and free special events for local people to enjoy. Our Nature Officer and resident bat expert, Daisy, held one of her popular accessible Bat Talk & Walk sessions. While local artist Nicky Stone hosted two incredible art sessions, which were fantastically well received.

We also led a "Community Nature Collage" project, inviting local people to bring in their photos of local nature to help us create a hedgehog-shaped collage board for display in the Bickeridge Centre (as pictured above). We'd like to say a huge thank you to our incredible Hedgehog Hero, Bob, for creating the hedgehog shaped template boards for this community nature project. Thank you, Bob, you're brilliant!

As part of this year's exhibition, we held an Under 16s Art Competition. We are very happy to announce this year's winner as Harriet Cocking, for her beautiful bat artwork. Congratulations Harriet, you are a very deserving winner. Enjoy your prizes!

Nature Champions Needed

Do you have an idea for a nature project? Is there a local green space you'd like to improve, or a species or habitat you want to support? Or perhaps you have an idea that can help other people connect with nature? Put your ideas into action by becoming a Nature Champion!

We can provide advice, training, and resources to help local people, help local nature. Whether you want to create a community garden or lead bug hunts, make bird boxes or transform unloved spaces into nature havens (and more) we can offer support.

To learn more about becoming a Nature Champion, please email our Wildlife Officer, David, at wildlife@framptoncotterell-pc.gov.uk.

Half-Term Help Hedgehogs Hibernate Event

On **Saturday 18th of October**, you're invited to join us and the **Hedgehog Heroes Here**, for our half-term **Help Hedgehogs Hibernate** event.

Come along to The Bickeridge Centre from 10am – 12pm for a morning of nature crafts, hedgehog box building, and our always popular Hedgehog Cake Bake Off – fun for all the family! At this event we will also be raising money for our chosen 2025 Climate & Nature charity – Yate Hedgehog Rescue.

This family event is free, but places are limited and booking is required – visit our website to learn more and to reserve your place.

Update on Ball Court Improvements at The Park

In the middle of September, installation began on our new and improved multi-use games area at The Park (Crossbow). Work is progressing well and is on track to be completed in time for the October half term!

The planning for this project was overseen by our Courts Working Group made up of all stakeholders, and was influentially informed by feedback from local people, including through responses to our 2024 Youth Survey and our 2023 Courts Survey.

Pathway at The Park – Update

At time of writing (at the end of September), work is due to begin to install accessible pathways at The Park (Crossbow). These new paths will improve the experience of all park users and help to make our facilities more accessible and inclusive for everyone.



The work will start at the Court Road entrance, which will require the closure of this entrance-way for approximately one week – please plan your journeys accordingly. It is anticipated that it will take between 8 to 10 weeks to complete installation of the new paths, depending on the weather. Construction will only be carried out on weekdays, no later than 6pm to minimise disruption. A compound area for the contractors will be on site at The Park for the duration of the pathway installation. We apologise for any inconvenience

this work may cause and thank you for your patience.

Silver Local Council Award for Frampton Cotterell Parish Council

We are very proud to have attained the Silver Award as part of the National Association of Local Councils (NALC)'s Local Councils Award Scheme.

"The attainment of the Silver Award signifies that a council excels in governance, community engagement, and continuous improvement. Distinguished by going beyond mere legal obligations, quality councils emerge as leaders within their communities, consistently seeking opportunities to enhance and develop further" – NALC Silver Award Criteria. We are now working towards Gold!

Community Christmas Celebration 2025

Our always-popular **Community Christmas Celebration** event will be taking place on **Friday 12th December, 6 – 8pm** at The Bickeridge Centre.

Everyone is welcome to attend this fun, free and festive Christmas Celebration!

We are now accepting stallholder applications for this year's celebration. If you are interested please get in touch via the contact details below.

The Bickeridge Centre

Woodend Road Frampton Cotterell, BS36 2LQ.
Open: 9am–2pm, Monday to Friday.

www.framptoncotterell-pc.gov.uk

Tel: 01454 864442 | framptoncotterell-pc.gov.uk

Email: office@framptoncotterell-pc.gov.uk



THE WINDOW HUB.CO.UK

Get in-touch today for a
FREE no obligation quote from the
ONLY company in the South West
to have 4 people in the finals
of the NFA25 Awards!

 **0117 3134 862**





Your local supplier & installer of Heritage Style Aluminium French & Bi-folding Doors,
Premium A+ Rated PVCu Sliding Sash Windows & Stunning Flush Casement Windows

A+



Bristol: 0117 3134 862

Exeter: 01392 642 634

Newton Abbot: 01626 932 964

E: info@thewindowhub.co.uk
W: www.thewindowhub.co.uk



News from Frampton Cotterell WI

In mid August, we had the honour of organising and hosting the regional "Sodbury Vale" annual group meeting at Crossbow House. Over 60 local WI members attended a social evening with food, drink and entertainment. Singer, Angie McCoy entertained us with a collection of songs through the decades from the 60s onwards, even managing to get a number of us up and dancing come the end of the evening! It was a very warm, enjoyable summer's evening and one to be remembered.



On the 19th August we held a very special Greek Night at Poplars Farm cafe, as our main "end of Summer" social event. There was a themed three course meal for members to enjoy – which was delicious. A great evening with great company and excellent service from the staff team at Poplars.

For our September talk, we welcomed back speaker Sarah Harris to talk about "Life After Barry" – Barry being her first goat, as she and her husband entered the world of goat and sheep farming. Sarah is a very funny and amusing speaker who always delivers a hilarious talk!

Visitors and new members are welcome to our monthly meetings at St Peter's Hall, on School Road, at 7.45pm, normally on the fourth Tuesday of the month. There is a charge of £4 for the evening and any new members can also join by paying a membership fee.

Up-coming events and talks for the Autumn schedule include:

28th Oct – Christmas Craft Evening | **25th Nov** – AGM & Quiz night | **Dec (date TBC)** – Christmas social.

We have many other events/socials lined up for the year ahead, including trips for meals out, garden/historic visits, etc. We also have a monthly "lunch club", open to all members and held at a different local venue each time. Watch this space and our Facebook page for confirmation of future event dates and more details. Special interest groups that meet separately include a book club, craft group, gardening group and our skittles and darts events.

If you would like to join us or to find out more, please search **FramptonCottWI** on **Facebook**.



CleanOvenCo
Bring Back the Shine

CleanOvenCo simply clean ovens!
Singles, doubles, Ranges, Agas,
hobs and extractors

07942 863741 info@cleanovenco.co.uk
www.cleanovenco.co.uk

Bristol Brunel Lions and their branch club Bradley Stoke Lions plan to celebrate World Sight Day at the Willow Brook Centre, Bradley Stoke on 11th October 2025 from 11am to 3pm.

The World Health Organisation observes World Sight Day annually, a global event to draw attention to blindness and visual impairment. It was originally initiated by the Sight First Campaign of the Lions Club International Foundation in 2000.

We plan to show people how difficult life can be for those with sight problems and how we can help them in different ways.

Bring along your old unused spectacles for the Lions to recycle. Try some of the challenges that are experienced on a daily basis by some.

Meet the guide dogs which are a lifeline for so many blind people and talk to the team who support the sight impaired with different equipment, advice and practical help.

We ask for your support to enable us to buy cameras for the Lions Child Sight Campaign. This will take vision screening into schools to identify early sight issues to see whether referral to an optician is necessary.



Winterbourne Short Mat Bowls Club

Although Winterbourne is a well established and thriving club with almost forty members, the after effects of Covid meant that we lost a lot of original members, and we had to reduce our playing sessions to meet the new reality. Unfortunately, the sessions we had to give up included evening ones that were more suitable to members of working age so, although we are always ready to welcome fresh recruits, we recognise that we are probably all retired players and that our playing hours are not very suitable for many younger people, men and women. Short Mat bowls is starting to attract younger players elsewhere, who are realising the level of skill required to play the game well and that men and women of all ages can compete together on an equal basis. We too would like to be able to offer younger people the opportunity to get involved in the sport.

For example, if you have children at school and you need to pick them up or be home when school finishes, we have the availability to alter our hours to suit you, providing there is sufficient interest. Maybe you can only play evenings or weekends, again there is availability to suit you. First though, we need you to let us know if you are interested and if you would like to come along for a free taster session, we have spare bowls we can lend you and we can provide basic tuition.

Although many members are happy to just play socially, we also enter two teams in the Bristol and District League and have been league champions in two of the last three years. We also run club competitions and there are plenty of competitions held in the local area if you are of a competitive nature.

For membership enquiries, or interest in trying the sport for free, Contact Club Secretary on 07542 052837, or Kelly at WADCA.



Pairs winners Bob and Anne at a summer competition

Volunteers needed to help run the Royal British Legion's Poppy Appeal



The UK's biggest armed Forces charity, the Royal British Legion, is appealing for new volunteers to help run its annual Poppy Appeal and raise vital funds to help veterans, current serving personnel and their families, who have served and sacrificed for their country. Volunteers help to distribute poppies within their communities – nearly 35 million across the UK – and can take on a range of roles including Poppy Appeal Organisers who lead a team of dedicated volunteers in their area. Volunteers receive full training.

To find out more and get involved with volunteering for the Poppy Appeal, visit rbl.org.uk/poppyappealvolunteer or call **0345 845 1945** or contact Louise Dolen at Ldolen@britishlegion.org.uk or call **07884 869597**.

Stay & Play

@St Michael's C of E Primary School,
Winterbourne, BS36 1LG

Birth to Preschool FREE Sessions

Every Tuesday during term time
9.30 – 11.00am

RMG ENGRAVING

Trophies & Glass Supplied

RACHAEL GALE

5 Parkside Ave, Winterbourne, BS36 1LU

T: 01454 773316

M: 07881 863408

E: rachael.gale195@btinternet.com
www.rmgengraving.co.uk



Severn Counties Foreign & British Bird Society Cage Bird Show



Saturday 1st November 2025

The Methodist Church Hall, Down Rd, Winterbourne BS26 1BN

Open from 2pm

Admission: Adults £1, children free

See a large variety of birds including canaries, finches, parrotlike and others and meet keepers and exhibitors – we will be happy to advise any visitors on birdkeeping.

We also have monthly meetings on the 3rd Thursday of each month at 8PM – All Welcome.

Contact Alan Goldsmith for more information via email - birdsandbutterflies2022@gmail.com





The importance of quiet reflection

This September I have been away with my wife in Northumberland which is a beautiful part of the United Kingdom. Generally, it is unspoiled by the trampling of too many tourists and it has been described by some as 'England's best kept secret'! It has beautiful rolling hills, long

sandy beaches, mountains, lakes, rivers, historic villages and a number of premier league National Trust properties to visit as well. A wonderful place all-round in which to spend a restful break.

As a Christian, Northumberland is significant as one of the cradles of Christianity in England, with the establishment of a 'Celtic Spiritual tradition' by monks from Iona in Scotland making missionary journeys to bring the faith to the Northeast, among their number were two of the great English saints Cuthbert and Aidan. The centre piece is Holy Island where they set up a monastery which formed the base for their missionary forages onto the mainland.

My wife and I love to visit Holy Island, which is one of the great places of pilgrimage with people flocking to cross the sands when the tide is low, making their way to the abbey church and the historic parish church of St Mary's.

Twice a day when the tide is in, the Island is cut off from the mainland and there is nothing better than being on the island when all the tourists have departed, leaving the die-hard pilgrims to embrace the true spiritual wonder of this holy place.

I always think that it is a wonderful metaphor for our lives, where there is the wonderful balance of being connected by the causeway when the tide is out and yet having quiet moments of seclusion when the tide is in.

For us as human beings to be fully whole and for our general well-being, we need to have in our lives times of connectivity with others, after all we are generally social creatures and being in communication with others is really important for us. However, we also need times of quiet reflection, a chance to recharge our batteries and assess who and what we are, as spiritual beings this should be a critical part of life.

The Celtic Saints were superb at getting this balance right and rooting it at the heart of their very existence. I encourage you in your lives, whether you are of faith or not, to strike this balance if you can. You just may discover it helps in ways you never imagined, and in a strange way you will engage with what is at the essence and heart of Holy Island and become even more rounded and whole as a person.

God Bless,

In Malcolm

The Revd. Malcolm Strange

Fromeside Benefice & Yate

The Parishes of Coalpit Heath, Frampton Cotterell, Iron Acton, Winterbourne & Winterbourne Down.

Email: Parishfromesidechurches.org.uk | Tel: 01454 776518



Thornbury Stairlifts
SALES SERVICING & REPAIRS



- New & Re-conditioned Stairlifts & Warranty
- Removals & Relocations
- Free Surveys & Quotes – No Obligation
- Rentals for Straight Stairs
- Independent, Professional & Friendly Advice
- Over 24 years practical experience



Independent Stairlift Specialist

01454 413 748 • 07833 318 722

www.thornburystairlifts.co.uk



Do you have questions about life?

Do you wonder if God exists?

Would you like an opportunity to explore?

If yes, then the Alpha course could be for you!

It is an opportunity to share honestly, ask questions and discover more about the Christian faith.

@ Zion United Church, Frampton Cotterell, we are running Alpha on Sundays 5-6.30/7pm from 12th Oct to 23rd Nov over 7 weeks.

Each gathering will begin with a light tea (sandwiches, quiche, cake), we will then watch a short film on a theme such as 'Who is Jesus?', followed by discussion, questions and sharing for those who would like to. Alpha is open to all and is a safe, friendly space for those who would say they have no faith, for those who would like to explore their faith further and for those intrigued and interested.

Alpha courses are run in many churches, homes, prisons, workplaces and in many more locations all across the world. Alpha guests particularly value the open conversation and the chance to ask questions of those who would say they have faith: Why do they believe what they do? How do they sense God with them? How do they know?!

Please do let us know if you have any enquiries about Alpha. Alpha is for those 18 and over- no upper age limit! All are very welcome.

Register direct via the Church website: <https://www.zuchurch.co.uk/welcome.htm> or email Sarah, Church Administrator (office.zuchurch@gmail.com)



Try Alpha.



★★★★★ 5 Star Google Reviews

AMW PLUMBING & HEATING

Bathroom Installs now available, please get in touch for a quotation

Heating Specialists
Bristol and the South West

12 YEAR Guarantee

New Boiler Installations

Boiler Repairs

Annual Boiler Service

Finance options available

Installations | Servicing | Repairs

0117 990 2735

WORCESTER BOSCH

amwheating.co.uk

Thornbury Art Club -

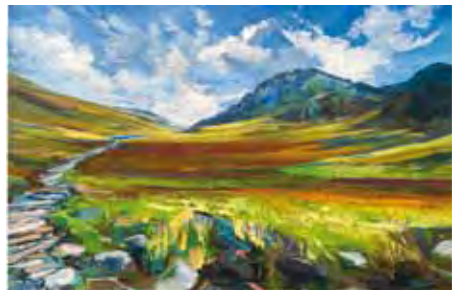
October Club Night is Tues 28th – Mark Warner

Every 4th Tuesday of the month, Thornbury Art Club invites an artist to give a talk or demonstration. This Club Night, Mark Warner will demonstrate the use of tone and colour in the landscape. He will use acrylic paints to create an art piece depicting the Malvern Hills. Mark will show how he builds up layers within a painting. He will give a very informative demo, delivered in a popular and enthusiastic manner. Mark is an experienced practising artist and tutor. He works from his studio in North Shropshire.

We'll have a short break during the evening for free tea, coffee, and biscuits. This will give us an opportunity to catch up with each other and of course say hello to our visitors. There will also be some time to chat to the artist and ask questions. Don't miss this fantastic chance to learn, socialise, and enjoy an evening of art, whether you're just starting out or looking to refine your skills.

Painting Workshop Saturday 1st November

Watercolours with Catherine Beale. Catherine will teach us some of her wet-in-wet techniques in capturing light and the use of punchy colours and tone to create atmosphere in our painting. A professional artist, her work has been in many group and solo exhibitions and can be found in private and public collections worldwide. Catherine is a member of the Society of Women Artists.



Members free, non-members very welcome - £6 on the door, cash or card. 7.15 for 7.30pm until 9.30pm. If you're interested in joining the Club, our membership secretary, Pat will be on the door to give you more information, or else contact us below.

Venue: - St Mary's Church Hall, Eastbury Road, Thornbury, BS35 1DR Free parking on-site.

We also run an Outdoor Sketching Group on the 2nd Saturday of the month.

For more details on any of the above, visit:

www.thornburyartclub.co.uk,

www.facebook.com/ThornburyArtClub,

or email: publicrelations.tac@gmail.com



ARTS APPRECIATION GROUP

Please join us at 2pm, on Thursday 16th October, at The Greenfield Centre, Park Avenue, Winterbourne, BS36 1NJ, for a talk and projection by Patrick Furley on "Early cinema films 1870–1930".

For more details call Sally on

07946 508316

THORNBURY Art Club

Frampton Cotterell Computer Group



Frampton Cotterell Computer Group are continuing to meet at the Bickeridge Centre in Frampton Cotterell offering

help and advice on the use of PCs, laptops and tablets. The group meets on Wednesday and Thursday mornings from 9.30 to 11.30am and new members are always welcome to join on whichever day they prefer.

Although younger people have grown up with computers, many older people have had limited experience of them in either their working or personal life. FCCG aims to help people to improve their knowledge, confidence and understanding, either through structured exercises which they can work through at their own pace or by answering specific questions which are raised. Because of the informal nature of the group people can also learn from each other as they try different things.

The group would also welcome new volunteers who have some experience of using computers or tablets. You don't need to be an IT expert, as a basic knowledge, an enquiring mind, and a willingness to share, are sufficient to deal with most issues. For more complex questions, experienced people are at hand to offer support to other volunteers.

For the latest information contact the Bickeridge Centre, Tel 01454 864442 or Email: over50it_1@hotmail.co.uk

Frampton Cotterell Computer Group

If you would like to learn how to use your computer or brush up on old skills, we are here to help you with one to one and group sessions. We meet at The Bickeridge Centre, Woodend Road Frampton Cotterell.



To enquire about future sessions

Tel: 01454 864442

Email: over50it_1@hotmail.co.uk

South Gloucestershire Mines Research Group
www.sgmrg.co.uk

Wednesday 15th October 2025

BEVIN BOYS
the forgotten conscripts

The story of their war and of eventual recognition for Bevin Boys

by Jackie Swift (Barry War Museum)

in the Miners Institute (aka Coalpit Heath Village Hall)
214 Badminton Road, Coalpit Heath, BS36 2QB
At 7:30pm for 8:00pm PROMPT start

Bevin Boys training underground and after their shift

Non-members welcome – £2 each (cash please)
(Membership is £20 per year, including talks and newsletters)

USE YOUR LOFT SPACE

Bristol's & Bath's local specialists in loft boarding and loft insulation

Transform your loft

Gain storage space

Reduce your heating bills

Free up room and add value to your home

- Boarding & Clearance
- Insulation
- Ladders & Hatches
- Shelving, Lighting & Lining
- Enquiry response within 24 hours
- Better energy efficiency
- Price guarantee
- 350+ 5 star ratings on Trustpilot

Tel: 0117 2980810

E-mail: info@useyourloftspace.co.uk

Visit: useyourloftspace.co.uk



Local Pub's Fundraising Efforts achieve New Defibrillator Installation

Staff and customers at Bristol's 'CAMRA Pub of the Year', the Rising Sun in Frampton Cottrell, have been busy raising money over the past few months to install a defibrillator at the pub.

Zane Edwards, assistant manager at the pub, ran the Brighton Marathon and raised over £2,300 for Children with Cancer.

Simon Lloyd, usually found playing at Glastonbury and Motion, raised over £1,000 by dj'ing in the pub.

What a fabulous effort and, whilst we hope it is never needed, it is really good to know there is an additional local Defibrillator in the area.

Pictured with Zane and Simon and the new Defibrillator are the Rising Sun's managers Ed and Liv.



CAMRA stands for CAMpaign for Real Ale and each year the Bristol & District CAMRA branch invites local members to nominate pubs for consideration in the branch 'Pub of the Year' competition. The finalists from this nomination stage are then judged against various nationally designated criteria to decide the result. Earlier this year, The Rising Sun in Frampton Cottrell was declared the winner of the Bristol & District branch Pub of the Year! Pub of the Year is not just about the beer and judges are expected to consider the full customer experience and whether a pub offers that 'something' extra.

Winterbourne Down Art Group

**We meet every Thursday, 2-4pm, at
The Church Hall on Church Rd until 18th
December** (excluding 23rd and 30th October).

All are welcome to come along and see if our friendly group is just what you need to inspire you to enjoy art now the longer nights are drawing in.

Contact Alison Sansum for more details on

01454 775133

Four Towns and Vale Link Community Transport

T: 01454 250500/510

E: info@4tvl.org.uk

W: www.4tvl.org.uk

Accessible Transport for you!

We offer a door-to-door, ring-and-ride service to help transport people who, for whatever reason, cannot access the current transport system. This covers shopping trips, social visits, special events, work/education and medical appointments.

We also have plenty of trips to various places of interest, including pub lunches, garden centres and shopping trips further afield.

There's something for everyone!

Our vehicles can be hired by community groups and we can also provide MIDAS training inhouse.

*Due to demand we need more help from volunteer social car drivers / office admin.
Please give us a call for details.*



Crossbow House, 58 School Road, Frampton Cotterell, Bristol, BS36 2DA

Plan early for the winter season!

**Vince's Logs - your trusted, local firewood supplier, offering free
delivery services all around Bristol**



In business for over a decade, Vince's Logs is dedicated to supplying the finest firewood in Bristol. Vince says 'our high quality logs are guaranteed for optimum burning, delivering warmth and efficiency keeping you warm throughout the colder autumn and winter months'.

With no extra delivery costs, Vince and his team offer quick and easy ordering and convenient delivery for their valued customers. The logs supplied are made of high-quality, well seasoned Ash hardwood and are available in either half or full tonne bags. Pries are competitive, with half tonne bags starting at £70 and one tonne bags at £120. Additional discounts are available for purchasing multiple bags of logs.

Vince and his team can also offer high-quality bags of kindling wood starting at £10 per bag (or five bags for £35). Please see website for full price list and current offers.



Call **0740 331 3616** / Email: vince@vinseslogs.co.uk
Website www.vinseslogs.co.uk



**Quality seasoned Ash Logs delivered
directly to your door! Get in touch for
our best prices - we offer good deals on
bulk loads and quick delivery!**

T: 0740 331 3616

www.vinseslogs.co.uk

e: vince@vinseslogs.co.uk



Shopmobility South Gloucestershire News Update

Shopmobility South Gloucestershire, based in Yate Shopping Centre next to the library are very pleased to be joined by a new Project Worker, Louise Harris. Louise has many years' experience working in the voluntary sector, managing services and volunteers, mainly people with disabilities and mental health issues.

After a period when we were open reduced hours, we are very excited to announce that we will now be open Tuesday, Thursday and Friday from 10am to 4pm. However, this will still vary occasionally subject to volunteer and staff availability, so we always advise you phone us first before dropping in.

We have a new telephone number 07749 954275 and if we aren't able to answer, please leave us a message. You can also email us at info@yate-shopmobility.org Our website is <https://myyate.co.uk/yate/shopmobility-yate> and you can find us on Facebook too. facebook.com/yateshopmobility.

We offer for hire mobility scooters of different sizes, including those that can be taken apart and put in the boot of a car, and wheelchairs that you can self-propel, or a carer can assist you with.

Yate shopping centre is an ideal location for people using mobility scooters and wheelchairs as it is flat and has over 100 shops, a mixture of independents and chain stores, all of which are accessible, along with a good choice of coffee shops and cafes. The shopping centre has plenty of disabled parking and we can meet you at your car or the bus stop with a scooter or wheelchair. The shopmobility office has a disabled toilet as does the shopping centre.

Anyone with limited mobility is welcome to use our service, young and older people, those with a permanent or temporary disability or injury, or perhaps you are deciding whether to buy your own scooter and want to try one out for a couple of hours first. If you or a relative are on holiday in our area, you are very welcome too.

As demand varies, it is advisable to book in advance, but feel free to drop in too or phone us with any queries.

We also offer longer term hire of the scooters that dismantle and wheelchairs if you want to use one for a week or two due to a temporary disability such as following a hip replacement or have a relative visiting who needs one.

We are always on the look out for volunteers to join our small but friendly team, for either a regular half day or full day. Full training will be given, you can drink as much tea and coffee as you like, and if it's a quiet day, you can even read the newspaper or a book! You do have to be fit enough to move the equipment around and demonstrate how it all works, including dismantling and reassembling the transportable scooters. Please call Louise for a chat if you are interested. Shopmobility is a non-profit-making charity (Registered charity no. 1107379), funded by South Gloucestershire Council, donations, sponsorship and grants.

We look forward to seeing you soon!



Paul's Place Opens its Life-Changing Accessible Hub

A new hub recently opened its doors in Shire Way, Yate, to offer independence and opportunities for physically disabled adults. Around £2 million was spent on the former Shire Way Community Centre, so Paul's Place has its own fully accessible premises for the disabled adults it supports. An anonymous legacy donation kick-started the renovations, followed by a huge fundraising campaign, which received a massive response. It turned an abandoned building into a modern and fully accessible Hub where physically disabled adults can live life to the full and have more opportunities than ever before.

After years of planning, fundraising, and then repurposing the former Shire Way Community Centre, Paul's Place finally opened its hub on Thursday 28th August. As the members crossed the threshold, there were surprises, joy and tears, because this isn't just a building, it's their freedom, their dignity and a place rebuilt for them.

An open day on Wednesday 10th September, was held for funders, local councillors, businesses and commissioning services who supported the project and the charity's mission to see a world that fully embraces disability. The members (service users) proudly led the guided tours, gave speeches and demonstrated the multiple rooms in action. The local community was invited to explore and see the building in action on Saturday, 20th September. They took part in the many arts, music and Paralympic sport activities on offer. There's also a **Christmas market** (in the planning) for **Saturday, 6th December**.

Paul's Place Head of Fundraising and Communications, Kayley Waller, said, "Our members are always at the heart of everything. To have them lead tours and showcase what we have been working on for years as a charity is amazing. It was a huge moment for Luke who found his confidence to speak to a full room of visitors about

Boccia, Paul's Place and the difference the charity has made for him."

Paul's Place member, Matt Badman, said, "We've waited twenty-five years. It's now finally open, and it looks amazing."



Image thanks to Rebecca Faith ©

The new facilities, including a music therapy room, a sports hall, and a fully adaptable kitchen empower members to do things for themselves that were once impossible.

Matt Badman added, "It's so much more adaptable, especially the facilities in the kitchen, where we can now cook our own food."

Not only does the Hub have more space to easily accommodate its one-hundred members, it can now grow and offer more accessible services. It will also host external events, including the Paralympic sport Boccia.

Lynda Williams, CEO, said, "The Hub is a one-off in the Southwest. It's completely adaptable. Fully accessible for a multitude of uses, and specifically for physically disabled people. Once you come through the door and see what's on offer, you'll never want to leave."

Transforming a disused community centre into the Hub it is today, was a massive undertaking. The list of donors big and small is a long one. Paul's Place member, Sue Milkins, said, "To them I would say we're very grateful and they have done a marvellous job."

Without Paul's Place, many physically disabled adults would face loneliness. The Hub offers more than its life-changing activities, it's a place to share laughter, friendship, and a warm drink together. Just £5 helps keep the kettle boiling and the conversations flowing.

Interested in Paul's Place or want to make a referral? Visit the charity's website or call them today and help change lives.

www.paulsplace.org.uk/30for30/
Call: 01454 777236

October

Weds 1st – Coffee Morning, Salem church, Watleys End, 10–11.30am. All welcome.

Weds 1st – Coffee Morning, Henfield Hall, Ram Hill 10am–12pm. henfieldhall@yahoo.com

Weds 1st, 15th, 22nd & 29th – Men's Chat Afternoon, Brouckridge Centre, 1–3pm. Free for men of any age.

Weds 1st – Wellbeing Friends, WADCA 1.45–3.45pm. £3. For people with dementia and their carers. Call Edna: 07789 662694.

Wed 1st & 15th – Table Tennis at Henfield Hall, Ram Hill, 2–4.30pm. £2. Equipment provided. henfieldhall@yahoo.com

Wed 1st, 15th & 29th – Bingo, The Miners' (Coalpit Heath Village Hall), 2–4pm. Fortnightly.

Wed 1st – Coalpit Heath WI, St Saviours Church Hall, 7.45pm. Visitors £5. Call: 07935 071291 or Facebook.

Thurs 2nd – 50+ Wellbeing in Nature Gardening group, Frome Valley Growing Project, Swan Lane, 10.30am–1.30pm. thegrowingproject123@gmail.com

Thurs 2nd, 9th, 16th & 23rd – Fromeside Food Hub, Zion, 12–2pm. Open to all. Free or 'pay as you feel'.

Fri 3rd, 10th, 17th & 24th – Laughter Club, Coffee, Cake, Chat, St Peters church, drop in, 10am–12pm.

Fri 3rd – Quiz, Crossbow, 8pm. Tel: 01454 772947 or email: crossbowhouse@gmail.com

Sat 4th – St Saviours Church open to visitors, 10am–12pm. Tea/coffee etc available.

Sat 4th – Repair Cafe, British Legion, Ryecroft Rd, BS36 2HW, 11am–1pm.

Sat 4th – Messy Harvest, St Saviours church hall, 3.30–5.15pm. Free. All welcome.

Sat 4th, 11th, 18th & 25th – Music and Dancing, Royal British Legion club, Ryecroft Rd. 8.30pm. £6, non-members £6.50.

Sun 5th – Frome Valley Growing Project Open, Swan Lane, Winterbourne, 11am–2.30pm (weather dependent). thegrowingproject123@gmail.com

Sun 5th – Video of St Saviours' 150th celebrations in the Hall, 3.30pm. To mark the 180th anniversary of St Saviours in 2025. Evensong at 6pm.

Mon 6th & 27th – Happy Mondays, St Peters church, 10am–12pm. Free refreshments and chat. All welcome.

Mon 6th – Gardening and Social Club, Manor Hall Jubilee Room, 2–3.30pm. All welcome. £3 incl refreshments. Tel: 07873 747513, www.manorhall.org

Tues 7th & 21st – Crotchet & Knit Club, Brouckridge Centre, 11am–1pm. Any ability. Tel: 01454 864442 or email: office@framptoncoterrell-pc.gov.uk

Tues 7th – Talk: Filton in Space – 65 Years and Counting, Winterbourne Medieval Barn, 7pm. www.winterbournebarn.org.uk

Weds 8th & 22nd – Volunteer Day at Frome Valley Growing Project, Swan Lane, Winterbourne, 10am–2pm. thegrowingproject123@gmail.com

Weds 8th, 22nd & 29th – St Saviour's church open 1–3.30pm, for tea and coffee, prayer or quiet space.

Weds 8th – Singalong with The Jays and Joy, Crossbow, School Rd, 2–3.30pm. £5, carers free. All welcome. Call Hilary: 07515 351813.

Thurs 9th – Vale of Frome Men's Probus, The Miners, 10am–12pm. Variety of speakers. Sec: Terry 0117 956 4259 or 07521 613154.

Fri 10th – Folk club, Crossbow, School Rd, 8–10.30pm. £3. Tel: 07974 151437 or Facebook: folkatframptoncoterrell

Sat 11th – Volunteer morning to tidy St Peter's churchyard and improve environment for wildlife, 9.30am–12pm. Just turn up. Call Steve, 07500 898179 or email: stevebirch7@btinternet.com

Mon 13th – Police Drop-in, Brouckridge Centre, 10.30am–12.30pm. Everyone welcome.

Tues 14th – Coffee & Cakes, Brouckridge Centre, 11am–1pm. Open to everyone.

Tues 14th – Film Afternoon, Salem, Watleys End, 2pm. Free parking, free admission. www.salemchurch.org.uk

Weds 15th – FC Local History Society, Zion, 7.30pm. £5 incl tea/coffee. Members free (membership £20pa). secretary_fcdlhs@yahoo.com

Weds 15th – South Glos Mines Research Group talk, Coalpit Heath Village Hall, 7.30pm. Non-members £3. Membership £20pa. www.sgmrg.co.uk

Thurs 16th – Coeliac UK Local Café Meet Up, Iron Acton Garden Centre cafe, 10–11.30am. Info: volunteering@coeliac.org.uk

Thurs 16th – Wellbeing Friends, WADCA 1.45–3.45pm. £3. For people with dementia and their carers. Call Edna: 07789 662694

Thurs 16th – Arts Appreciation, Greenfield Centre, Winterbourne BS36 1NJ, 2pm. For more info call Sally on 07946 508316.

Fri 17th – Cider Tasting, Winterbourne Medieval Barn, 7pm. Ticket £20 includes ciders. Book online. www.winterbournebarn.org.uk

Fri 17th – Bingo, Crossbow Community Centre, School Rd, 8pm. Tel: 01454 772947.

Sat 18th – Repair Cafe, All Saints' hall, Winterbourne Down, 10.30am–12pm. winterbourneenvironmental@gmail.com

Weds 22nd – Ladies Circle, Zion, 7.30pm. Varied speakers. More info: jeanbradbeer@gmail.com or call Gill, 01454 850684.

Thurs 23rd – Memory cafe, Greenfield Centre, 2–3.30pm. Chat and cuppa. Free. More info from The Alzheimers Society.

Thurs 23rd – Filling Station, Manor Hall, 7.30pm. Christian gathering. Open to all. www.thefillingstation.org.uk/station/south-glos

24–31st – Frampton Coterrell Scarecrow Trail (incl mini scarecrows and window displays).

Tues 28th – Coffee & Cakes, Brouckridge Centre, 11am–1pm. Open to everyone.

Tues 28th – Women's fellowship, Salem church, Watleys End, 2.30pm. www.salemchurch.org.uk

Tues 28th – Mothers Union evening group, St Saviours Church, 7.30pm. Call Mary Head on 01454 887870.

Tues 28th – Frampton WI, St Peter's Hall, School Rd, 7.45pm. £4. Email: Fcwisecretary@outlook.com or Facebook: FramptonCottWI.

Weds 29th – Litter Busters, meet outside British Legion, Ryecroft Rd, 10am. Voluntary group who help to keep our village tidy, once a month. See Village Action on Facebook or email: framcottva@hotmail.co.uk

Thurs 30th – Halloween Family Crafts, Winterbourne Medieval Barn, 10.30am.

Fri 31st – Soup lunches, St Saviours church hall, 12pm.

Fri 31st – Family Halloween Party, The Miners, 3pm.

November

Sat 1st – St Saviours Church open to visitors, 10am–12pm. Tea/coffee etc available.

Sat 1st – Repair Cafe, British Legion, Ryecroft Rd, BS36 2HW, 11am–1pm.

Sat 1st, 8th, 15th, 22nd & 29th – Music and Dancing, British Legion, Ryecroft Rd, 8.30pm. £6.50.

Sun 2nd – Frome Valley Growing Project Open, Swan Lane Winterbourne, 11am–2.30pm (weather dependent). thegrowingproject123@gmail.com

Mon 3rd – Gardening and Social Club, Manor Hall Jubilee Room, 2–3.30pm. All welcome. £3 incl refreshments. www.manorhall.org. Tel: 07873 747513.

Tues 4th – Crotchet & Knit Club, Brouckridge Centre, 11am–1pm. Any ability. For more info call 01454 864442 or email: office@framptoncoterrell-pc.gov.uk

Weds 5th – Coffee Morning, Salem church, Watleys End, 10–11.30am. All welcome.

Weds 5th – Coffee Morning, Henfield Hall, Ram Hill 10am–12pm. henfieldhall@yahoo.com

Weds 5th – Wellbeing Friends, WADCA 1.45–3.45pm. £3. For people with dementia and their carers. Varied activities, games, cuppa, chat. For more info call Edna on 07789 662694.

Weds 5th & 19th – Table Tennis at Henfield Hall, Ram Hill, 2–4.30pm. £2. Equipment provided. Refreshments available. henfieldhall@yahoo.com

Weds 5th – Singalong with The Jays and Joy, Crossbow, School Rd, 2–3.30pm. £5 includes refreshments. Carers free. Call Hilary, 07515 351813.

Weds 5th – Coalpit Heath WI, St Saviours Church Hall, 7.45pm. AGM. Visitors £5. Tel: 07935 071291 or Facebook.

Thurs 6th – 50+ Wellbeing in Nature Gardening group, Frome Valley Growing Project, Swan Lane, 10.30am–1.30pm. thegrowingproject123@gmail.com

Thurs 6th, 20th, 13th & 27th – Fromeside Food Hub, Zion, 12–2pm. Open to all. Free or 'pay as you feel'.

Fri 7th – Laughter Club, Coffee, Cake, Chat, St Peters church, drop in, 10am–12pm.

Fri 7th – Quiz, Crossbow, 8pm. Tel: 01454 772947 or email: crossbowhouse@gmail.com

Sat 8th – Volunteer morning to tidy St Peter's churchyard and improve environment for wildlife, 9.30am–12pm. Just turn up. More info from Steve Birch, call: 07500 898179 or email: stevebirch7@btinternet.com

Sat 8th – Wine Tasting, Winterbourne Medieval Barn, 7pm. Book online. www.winterbournebarn.org.uk

Mon 10th – Happy Mondays, St Peters church, 10am–12pm. Free refreshments and chat. All welcome.

Tues 11th – Coffee & Cakes, Brouckridge Centre, 11am–1pm. Open to everyone.

Tues 11th – Film Afternoon, Salem, Watleys End, 2pm. Free parking, free admission, warm welcome. www.salemchurch.org.uk, Facebook: Watleysendmethodist

Weds 12th, 19th, 26th – Men's Chat Afternoon, Brouckridge Centre, 1–3pm. Free for men of any age.

Weds 12th & 26th – Bingo, The Miners' (Coalpit Heath Village Hall), 2–4pm. Fortnightly.

Thurs 13th – Festive Fused Glass workshop, Winterbourne Medieval Barn, 10am or 1pm. Book at winterbournebarn.org.uk

Thurs 13th – Vale of Frome Men's Probus, The Miners, 10am–12pm. Variety of speakers. Terry 0117 956 4259 or 07521 613154

Fri 14th – Folk club, Crossbow, School Rd, 8–10.30pm. £3. Info, tel: 07974 151437 or Facebook: folkatframptoncoterrell

Sat 15th – St Peters Christmas Fair, 10.30am–1pm.

Sat 15th – Repair Cafe, All Saints' hall, Winterbourne Down, 10.30am–12pm. winterbourneenvironmental@gmail.com

Sat 15th – Messy Church, St Saviours church hall, 3.30–5.15pm. All welcome.

Sat 15th – George Michael Tribute Night, The Miners, 8pm.

Tues 18th – Crotchet & Knit Club, Brouckridge Centre, 11am–1pm. Any ability. Tel : 01454 864442 or email: office@framptoncoterrell-pc.gov.uk

Weds 19th – Volunteer Day at Frome Valley Growing Project, Swan Lane, Winterbourne, 10am–2pm. thegrowingproject123@gmail.com

Weds 19th – FC Local History Society, Zion, 7.30pm. £5 incl tea/coffee. Members free (membership £20pa). secretary_fcdlhs@yahoo.com

Thurs 20th – Coeliac UK Local Café Meet Up, Iron Acton Garden Centre cafe 10–11.30am. Share experiences of living gluten free. Info: volunteering@coeliac.org.uk

Thurs 20th – Wellbeing Friends, WADCA 1.45–3.45pm. £3. For people with dementia and their carers. Varied activities, games, cuppa, chat. For more info call Edna on 07789 662694.

Thurs 20th – Arts Appreciation, Greenfield Centre, Winterbourne BS36 1NJ, 2pm. For info call, 07946 508316.

Fri 21st – Bingo, Crossbow Community Centre, School Rd, 8pm. Tel: 01454 772947.

Sat 22nd – Christmas Coffee Morning, St Saviours, 11am.

Mon 24th – Festive Fused Glass, Winterbourne Medieval Barn, 10am or 1pm.

Tues 25th – Coffee & Cakes, Brouckridge Centre, 11am–1pm. Open to everyone.

Tues 25th – Women's fellowship, Salem church, Watleys End, 2.30pm.

Tues 25th – Mothers Union evening group, St Saviours Church, 7.30pm. Short service, tea, cake, craft, various speakers. Call Mary Head, 01454 887870.

Tues 25th – Men's Night, The Globe. Church-based group enjoy pub meal and speaker every 6 weeks or so. You do not have to belong to any church. Contact Jeff, email: jeffpearl55@gmail.com or Tel: 01454 314184 or 07813 582589.

Tues 25th – Frampton WI, St Peter's Hall, School Rd, 7.45pm. £4. Email: Fcwisecretary@outlook.com

Weds 26th – Litter Busters, meet entrance to the park Heather Ave, 10am. Voluntary group who help to keep our village tidy, once a month. See Village Action on Facebook or email: framcottva@hotmail.co.uk

Weds 26th – St Saviour's church open 1–3.30pm for tea, coffee, prayer or quiet space.

Weds 26th – Ladies Circle, Zion, 7.30pm. Varied speakers. Our final meeting. More info: jeanbradbeer@gmail.com or call Gill on, 01454 850684.

26th, 27th, 28th – The Christmas Schooner, WADCA, 7.30pm. 29th, 2.30pm. Winterbourne Musical Theatre. Tickets £13 online at Ticketsource or tel: 0333 666 3366.

Thurs 27th – Memory cafe, Greenfield Centre, 2–3.30pm. Chat and cuppa, socialising, advice, varied speakers. Free. More info from The Alzheimers Society.

Thurs 27th – Filling Station, Manor Hall, 7.30pm. Christian gathering. Open to all. Various speakers each month. www.thefillingstation.org.uk/station/south-glos

Fri 28th – Soup lunches, St Saviours church hall, 12pm.

Sun 30th – Midwinter Revels, Winterbourne Medieval Barn, 4.30pm. www.winterbournebarn.org.uk

Monthly listings at www.villageaction.org.uk

M.W.
PROPERTY MAINTENANCE
BUILDING & DECORATING SERVICES

Interior & Exterior Painting & Decorating
Extensions | Loft conversions | Roofing
Bristol based | 25 years experience
Fully insured | References available

For all projects call
Mike: 07989 507143 or Terry: 07762 316376

RPH
RUNDLE PLUMBING & HEATING LTD.

- Boiler Installation and Servicing
- Central Heating Services • Bathrooms • Plumbing

Local, friendly business
07402 613 506
email: rundleph@outlook.com

DCL
DOORS & WINDOWS

Doors

- Composite Entrance • Bifolds • French/Sliding

Windows

- U-PVC • Aluminium • Sash • Cladding
- Glass Replacement • Fascias & Guttering

07960 097 170
Enquiries@dcldoorsandwindows.co.uk
https://www.dcldoorsandwindows.co.uk

@dcldoorsandwindows

BRUNEL GARAGE DOORS

Family run business with over 15 years' experience, carrying out installations and repairs to all types of garage doors in the Bristol and surrounding areas.

Free Quotation Service

Visit us and try our roller garage doors in our new demonstration area (by appointment only)

Unit 10 Ram Hill Business park,
Coalpit Heath, Bristol BS36 2TX

01454 882212
www.brunelgaragedoors.co.uk

Up and over garage doors
Sectional garage doors
Roller garage doors
Side hinged garage doors



LA ELECTRICAL & SOLAR

Need an ELECTRICIAN?

Call our trusted, friendly team now!
01454 633 336

GO SOLAR SAVE BIG

Save 70% on your electricity bills!
Call 01454 633 336 or laelectrical.com

Electricity bill was £129/month
NOW! £28/month

LA ELECTRICAL & SOLAR

COVERALL ROOFING LTD

Bristol based roofing specialists with over 40 years experience.

- Pitch roofing overhauls
- Pitch roofing repairs
- High performance flat roofing
- EPDM rubber flat roofs
- Santile installations
- Velux windows
- UPVC cladding and guttering
- Fascia and soffits
- Lead work
- Remedial work

Call today for a free quote

Landline: 01454 250148 Website: www.coverallroofing.co.uk
Mobile: 07831 616184 Email: coverallroofingltdbristol@gmail.com

THE AERIAL MAN

TV Aerial and Satellite Specialist
Affordable Prices - Reliable Service

- Poor Reception Problems Solved
- Digital Aerials
- Sky Work
- Free Quotes
- Two Year Guarantee
- Additional TV Points
- Repairs
- OAP Discounts

01454 660 046
07818 413 451
www.theaerialman.co.uk

CWG DESIGN & BUILD LTD

- A comprehensive building service from design to completion -

Local reputable building contractors with over 40 years' experience - references available upon request
New builds, extensions, annexes, renovations and lots more (including an experienced female decorator)

NHBC **CITB**

TEL: 07980 858249 | 01454 501104

Bradley Stoke Rubbish Clearance
Licensed waste carrier

- We load and clear • Same day service
- Single item jobs • Cheaper than a skip • No VAT
- Household, Garden, Garage and Shed cleared

Contact Stuart or Sue on
0800 0234 995
(Freephone) or
07770 944727
stuart.thistlewood@yahoo.co.uk

Sherbourne Home and Garden Maintenance

Local Handyman (based in Bradley Stoke)

'All Work Considered'
(painting & decorating, gardening, fencing, jet washing, repairs)

Contact: Alan
07717 476 722 | 0117 9791061

Harvey's Waste & Garden Services

*We do all the hard work
so you don't have to!*

Rubbish clearance - cheap and fast! Full house clearance to single items removed.

All garages, sheds and gardens cleared.

Small demolition projects - eg sheds and garages - completely removed.

List of Services:

- Fencing supplied & fitted
- Hedge and grass cutting
- Tree trimming and felling
- Turfing • All garden waste removed

No job too big or too small!

Fully licensed & 10% discount for over 65s

Call **07956 548756**
or email Harveyswgs@outlook.com

Mayo's Heating & Plumbing

**Boiler fitting, repairs and full
system upgrades including
radiators!**



Full Bathroom upgrades,
including wetrooms.



Landlord certificates
and general plumbing.

Call James:

0117 904 3172 or

07952 272 851

m6yos@hotmail.com



Frampton Garage

01454 777841

Your local choice for vehicle repairs and maintenance



New Workshop!

We have opened a
second workshop in Yate,
pick whichever location is more
convenient for you.



6 The Causeway, Coalpit Heath, Bristol, BS36 2PD
enquiriesframptongarage@hotmail.com

Unit 4 Apollo Park, Armstrong Way, Yate, Bristol BS37 5AH
framptongarageyate@hotmail.com
Yate, Tel: 07393 730774

BonneFreshClean
Carpet & Upholstery Cleaning Specialists



Professional carpet, upholstery
and leather cleaning carried out
with care by an all-female team

For a free no obligation quotation call Karen on
01454 436001 or **07774 908410**

www.bonnefreshclean.co.uk
44 Townsend Lane, Almondsbury, Bristol, BS32 4EQ

*Life is easier
with a cleaner ...*



Let the award-winning CapriGems ease your life!

We pride ourselves on our reliability, affordability,
care and attention to detail, leaving every home or
business spotlessly clean.

Drop us a line or give us a call for a FREE quote.

01454 506117 | admin@caprigemscleaning.com
www.caprigemscleaning.co.uk



Choices
Price Glass

WINDOWS • DOORS • CONSERVATORIES

FENSA registered

10 year insurance backed guarantee on all Doors & Windows

Established 1973

- | | |
|--|------------------------------|
| ■ PVC, ALUMINIUM & HARDWOOD
WINDOWS & DOORS | ■ CONSERVATORIES |
| ■ SLIDING SASH WINDOWS | ■ BESPOKE GLAZING
SERVICE |
| ■ BI-FOLDING DOORS | ■ GLASS CUT TO SIZE |
| ■ FRENCH & PATIO DOORS | ■ LEADED LIGHTS |
| ■ SECONDARY GLAZING | ■ COLOURED SPLASHBACKS |

Call - 0800 975 7967 | www.bristol-doubleglazing.co.uk



office@priceglassbristol.co.uk



Price Glass and Glazing Bristol

**Visit our
showroom at**

**4-6 Ashley Down Road
Bristol, BS7 9JW**

OPENING HOURS

Monday to Friday
8.00am – 5.00pm

Saturday
By appointment only

Sunday Closed





James Antony FLOORING

Residential & Commercial



- Carpets • LVT • Vinyls • Herringbone Flooring •
- Laminate Flooring • Engineered Flooring •

- Over 23 years experience •
 - All work carried out guaranteed •
 - Free measuring and estimating service •
 - Quality flooring at competitive prices •
- "Will beat any like for like quotation on Carpets, Laminates and Vinyls"*

Tel: 0117 401 8412 Mobile: 07584 674101

Email: jamesantonyflooring@gmail.com www.jamesantonyflooring.co.uk

357 Filton Avenue, Bristol BS7 0BD



Useful Trades & Services for the Home & Garden

BEAUFORT
PROPERTY MAINTENANCE

FREE QUOTATION
No Obligation

• PAINTING & DECORATING
• HOME IMPROVEMENT
• BUILDING MAINTENANCE & REPAIRS

Call for your free quotation:
01454 777 887 or 07980 301 905

SPECIAL OFFER

**5 DOORS
FITTED IN
YOUR HOME
FOR ONLY
£579**

Any 5 white primed 'Suffolk' or 'Colonial' doors complete with a choice of 7 different handles, hinges and latch. Fitted in your home.

DOOR EXPRESS
08000 973333 - 07767 376770
**A PHONE CALL WILL SECURE YOUR
FITTING ORDER DATE**
This offer applies to door sizes 78"x 30" & 78"x 27"
www.doorexpresssouthwest.co.uk

MD Aerials
Call Michael Dagger

T: 01454 418 341 M: 07817 304 236
mikemdaerials@gmail.com www.mdaerials.co.uk

All types of aerial and satellite work undertaken including:

- Reception problems
- TV wall mounting
- CCTV
- Free Quotations
- Additional room feeds
- Setting up and tuning
- Wi-Fi access points

Over 34 years' experience!

NPD Decorating
Local Painter and Decorator

Professional, high quality interior and exterior work

Contact Nigel:
07915 061314
nddecoratingsw@gmail.com

www.keymasterbristol.com

KEYMASTER
Local Mobile Locksmith

• Lock Opening
• Garage Security Locks
• High Security Padlocks
• Digital Locks
• On Site Key Cutting
• Locks for uPVC Doors & Windows

Based in Frampton Cotterell

MLA Approved Locksmith Company Providing Fast, Personal Service at competitive Rates

Major Credit Cards Accepted:

Carl Jenkins MMLA MBLI
Qualified Engineer

0117 957 0011
E: info@keymasterbristol.com

ROOFING SERVICES

07593 704412
caseywebb@hotmail.co.uk
www.webbsroofing.co.uk

Over 15 Years Experience

NO JOB TOO BIG, OR TOO SMALL

SERVICES: New Roofs, New Tiles, Roof Repairs, Gutter Work, Chimney Repairs, Day Time Work, Night Time Work, Free Estimates, Fully Licensed

SOLUTIONS: Flat Roofs, Pitched Roofs, Chimney Repairs, Gutter Repairs, Day Time Work, Night Time Work, Free Estimates, Fully Licensed

Honest, Reliable, Local

FREE QUOTATIONS

W.J.M Plumbing & Tiling

OAP DISCOUNT 24 hour call out – No Job Too Small

Bathrooms ~ Kitchens
Unblocking Drains ~ Leaks Repaired

Reliable, Affordable
Friendly Service

Tel: 01454 851 830
Mob: 07902 383219

Based in Coalpit Heath

ICP Handyman Services

For all your jobs around the home -

- Unblocking sinks • Flat pack furniture • Leaking taps
- Shelving • Fitting curtain poles • Decorating services

To the bigger jobs: Bathrooms, Tiling and Flooring
Garden Services Decking, Fencing, Shed felt roof repairs

Call Ian on 07901 772026 for a fast, friendly, reliable service or email i.c.potter@hotmail.com

GARY SMART ELECTRICAL

Domestic, Commercial and Industrial Installations

All electrical work undertaken ...

- Rewiring • lighting • bathroom showers • kitchens • garden and garages etc

Safety inspections, Periodic Testing, Fault finding and Repairs

Fully qualified City & Guilds
Electrician 17th Edition Part P Registered
07805 070 947 • 0117 987 1437 • garysmart@sky.com
All backed with a 6 year Niceic insurance policy

LOW COST PLUMBING

Taps, Washers ✓
Toilets, Cisterns ✓
Leaks, Blockages ✓
Tanks, Overflows ✓
Lead Pipes, Stopcocks...etc... ✓

OAP DISCOUNTS and NO VAT

0117 957 5092

Emergency number: 07798 905 337

Keep it in your mobile

Lock Stuck and Barrels

The complete door and window service

Locked out?
Need to replace or change your locks?

- Swift LOW cost emergency service to all home/commercial lock outs.
- Non destructive methods gaining entry quickly and efficiently from the initial call.
- Keys or handbag stolen? Burgled! Need your locks changed or re keying on a new home, call us.

ALSO: LOW cost Repair / replacement of UPVC / ALUMINIUM WINDOW and DOOR: LOCKS, HINGES, HANDLES AND MISTED UP / BROKEN DOWN DOUBLE GLAZED UNITS.

Full explanation and costs given before any works carried out. All work fully guaranteed. No call out fee

Call Dave on 07798 905 337

www.thebristollocksmith.co.uk
Based in Frampton Cotterell

CHIMNEY2SWEEP

YOUR LOCAL CHIMNEY SPECIALIST

T: 07727 994 996
www.chimney2sweep.co.uk

Chimney sweeping | Stove installation
Chimney pots & cowls | Bird nest removals

HETAS registered stove installer & chimney sweep, Reg number 8580

ROOF-TECH Bristol

From a single tile to a whole roof, all build and roof works undertaken, pitched and flat.

We have over 20 years experience are fully insured and all work is guaranteed.

For a FREE, no obligation quote and roof survey, just give us a call.

Call: Ben Peters: 07540 861550
E-mail: roof-tech@hotmail.com

TS Technisys SECURITY

HOME ALARM & CCTV SYSTEMS

- Installation of wireless & wired alarms
- Repairs & Servicing
- New bell boxes, detectors and door contacts
- HD CCTV and Intercoms

Call us 0117 9075709
Email - info@technisys.co.uk
Technisys.co.uk - Based in Stoke Gifford

Stowell's CARPENTRY & JOINERY

- All aspects of Carpentry & Joinery
- Private & Commercial Work

Call : 07437 605 123
Email : stowellscj@live.co.uk

EXCELLENCE • INTEGRITY • INNOVATION

Lee Williams Tiling & Repair Specialist

Is your bathroom leaking?

Have your tiling repaired, regouted and resealed!

Over 30 years' experience

Call Lee for free advice:
07976 359055
leewilliamstiling@outlook.com

Before After

D-CR DOMESTIC APPLIANCES

DOMESTIC APPLIANCE REPAIRS

- WASHING MACHINE
- TUMBLE DRYER
- DISHWASHER
- FRIDGE FREEZER
- COOKER
- HOB OR HOOD

Tel 01454 850522 or 07917441539
EMAIL: d-cr@live.co.uk
www.d-crdomesticappliances.co.uk

WAY BEDROOMS

Specialist in fitted bedrooms, offices and bespoke furniture

Richard@waybedrooms.co.uk
01454 856 567 / 07760 345567
www.waybedrooms.co.uk

Index of Local Advertisers

Aerials		Community Articles cont		Home Care	
Dan Grace Aerials	43	Village Diary	41	My Homecare – Care at Home	4
M D Aerials	47	Winterbourne Eve WI	20	Hotels / Restaurants – Aztec Hotel	7,12
Aggregate Supplies		Winterbourne Library	20	Kitchens	
Earthworks – Aggregates / Topsoil	8	Winterbourne Medieval Barn	6	Dream Doors	16
Bathrooms		Winterbourne Short Mat Bowls	31	Yate Kitchen Co	2
AMW Plumbing & Heating	33	Computer services: IT – Repair/help		Locksmith	
Lee Williams Tiling & Repair	49	Frampton Cotterell Computer Group	35	Keymaster	47
Bedrooms – WAY Bedrooms	49	Doors		Lock Stuck and Barrels	48
Blinds – North Avon Blinds	11	Brunel Doors (garage)	42	Opticians – Mike Harbord Opticians	17
Builders / Groundwork / Property svcs		DCL Doors & Windows	42	Painter / Decorator	
Beaufort Property	47	Dream Doors (kitchen)	16	MW Property Maintenance	42
CWG Design & Build Limited	43	Door Express (internal)	47	NPD Decorating	47
ICP Handyman	48	Price Glass	45	The Lady Decorator	10
MW Property Maintenance	42	Southern Plasticad	52	Plumbing / Heating Engineers	
Sherbourne Home & Gdn Maintenance	43	The Window Hub	28	AMW Plumbing & Heating	33
Use Your Loft Space	35	Electrical Appliance Repairs		Low Cost Plumbing	48
Carpentry & Joinery		DC-R domestic appliance repairs	49	Mayo's Heating & Plumbing	44
Stowells Carpentry & Joinery	49	Electrician		Rundle Plumbing & Heating	42
Carpet & Upholstery Cleaners		Gary Smart Electrical	48	WJM Plumbing	48
Bonne Fresh Clean	44	LA Electrical & Solar	43	Roofing	
Car / Motorbike- Repair / Valet / MOT		Engraving – RMG Engraving	30	Coverall Roofing	43
Frampton Garage	44	Estate Agents / Property Letting		Pinewood Roofing	21
LCM Automotive	1	Bundy and Bond Estate Agents	1,3	Rooftech	49
Central Heating Engineers		Events		Webbs Roofing Specialists	48
AMW Plumbing & Heating	33	Aztec Hotel – Strictly Glitter Ball	12	Rubbish Clearance	
Mayo's Heating & Plumbing	44	Seven Counties Foreign & British		Bradley Stoke Rubbish Clearance	43
Rundle Plumbing & Heating	42	Bird Society Cage Bird Show	31	Earthworks – Grab, Tipper, Skip hire	8
Charities		WBC – Halloween Spooktacular	9	Harvey's Waste & Gdn Services	44
Children's Hospice South West	25	Firewood		Schools / Tuition	
Paul's Place	39	Vince's Logs (free delivery)	37	Kumon Bradley Stoke	13
The Grand Appeal	25	Flooring		Security	
Chimney Sweep		James Antony Flooring	46	Technisys – Home Alarm Systems	49
Chimney 2 Sweep	49	Phoenix Flooring	51	Shopping Centres	
Cleaning & Domestic Services		Garden Servives		Willow Brook Centre	9
Capri Gems Cleaning Services	44	Harvey's Waste & Gdn Services	44	Solar Energy	
Clean Oven Company	29	ICP Handyman	48	LA Electrical & Solar	43
Clover Ovensclean	5	Sherbourne Home & Gdn Maintenance	43	Stairlifts – Thornbury stairlifts	32
Community Articles		Golf Course		Storage Solutions	
Alpha course at Zion	33	Thornbury Golf Club & Lodge	24	North Bristol Container Storage	18
Bristol Lions World Sight Day	30	Hair / Beauty		Tiling – Lee Williams Tiling & Repair	49
Coalpit Heath WI	10	Aztec Hotel & Gym	7,12	Travel	
Crossbow Singers	5	Beauty Plus	17	Four Towns & Vale Link Community	
Floral Friends of Frampton	8	Nat Austin SPMU –		Transport	36
Frampton Cotterell Parish Council	26	Aesthetics & Beauty Rooms	14	Green Commuity Travelwest	22
Frampton Cotterell WI	29	Restore Clinic	11	Wellbeing Courses / Retreats	
Hambrook Sports Club	14	Salon 98	23	Dawn Clode – Holistic courses	17
Minister's Message	32	Health, Fitness & Wellbeing		Soundworks – sound meditation	23
New defibrillator at Rising Sun	36	Dawn Clode – Holistic courses	17	Tip the Balance	15
Police & Crime Commissioner	19	Soundworks – sound meditation	23	Windows/Conservatories & Doors	
Shop Mobility	38	Tip the Balance	15	DCL Doors & Windows	42
South Glos Miners Research Group	34	Heating Installation		Price Glass	45
St Michael's school	22	AMW Plumbing & Heating	33	Southern Plasticad	52
The Christmas Schooner	10	Mayo's Heating & Plumbing	44	The Window Hub	28
The Hopkins Summer fundraiser	13	Rundle Plumbing & Heating	42	Will Writing – The Grand Appeal	25
Thornbury Art Club	34				

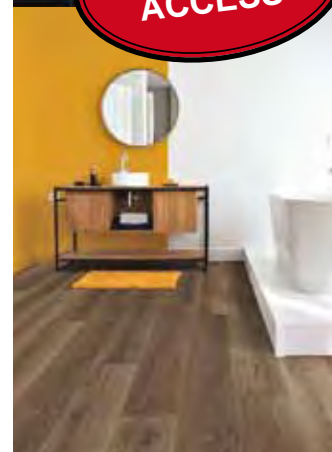
EDITOR'S NOTE: Winterbourne and Frampton Matters is independently published and delivered FREE to every home (c 7,000+) in Winterbourne, Frampton, Coalpitheath, Winterbourne Down and Moored. The views and opinions expressed are not necessarily those of the editors (unless it is a personal review of a service that we have participated in). We cannot vouch for every advertiser personally (although since starting in April 2009 we have used many of the services ourselves). Any feedback or experience is welcomed. We would like to thank all the advertisers who support this publication and therefore make it possible. Please return their support by utilising their services when and where you can. It is the advertiser's responsibility to ensure conformity with the Trade Descriptions Act 1975, Business, Advertisements Disclosure Order 1977, Sex Discriminations Act 1975 and the Consumer Credit Act 1974. We cannot be held responsible for misrepresentations in the adverts included. All artwork created by Matters Magazines must not be published in any other media without our permission. © Matters Magazines 2025 © Winterbourne & Frampton Matters 2025.

If your group, organisation or business would benefit from appearing in this magazine please call Jaci on 01454 300 900.

Phoenix Flooring Limited



DISABLED ACCESS



RESIDENTIAL & COMMERCIAL FLOORING SPECIALISTS

**Carpets • Luxury Vinyl Tiles • Laminates
Engineered Wood • Room Size Remnants
Vinyls • Artificial Grass**

OPEN TO THE PUBLIC AND TRADE

Tel: 01454 620707

email: enquiries@phoenixflooringltd.co.uk

www.phoenixflooringltd.co.uk



**Unit 15 Hemingway Business Centre
Walker Way, Thornbury, Bristol, BS35 3US**



southern plasticlad ltd

Windows, Doors, Fascias, Conservatories and Roofs



Our Services

- Conservatories
- Windows
- Doors
- Garage Doors
- Roofing- Pitched and Flat Roofs
- Fascia, Soffits & Guttering

Showroom Opening Hours

Monday – Friday: 9am – 5pm

Saturday: 9am – 1pm



01454 777732

sales@southernplasticlad.co.uk

www.southernplasticlad.co.uk

Unit 4, Ram Hill Business Park, Ram Hill, Coalpit Heath, Bristol, BS36 2TX



Winterbourne & Frampton Matters Call 01454 300900 to advertise