

Your one truly LOCAL  
Community Magazine,  
delivered FREE  
to every home



Keep Me  
I'm useful

# Winterbourne & Frampton

including Coalpit Heath & Winterbourne Down

## Matters

Dec 2018



Merry Christmas  
one and all!

**Bundy & Bond**  
Independent Estate Agents

01454 540 200  
[www.bundyandbond.co.uk](http://www.bundyandbond.co.uk)

**Award winning  
customer service**

**Free professional  
photography**

 BRITISH  
PROPERTY  
AWARDS  
2017  
SILVER WINNER  
ESTATE AGENT  
IN SOUTHERN  
GLoucestershire &  
GLOUCESTERSHIRE

Wishing you  
all a warm  
& cosy  
Christmas



0117 935 2400 | [gregorheating.co.uk](http://gregorheating.co.uk)  
Your local choice for smarter heating solutions.

 **Gregor**  
Heating, Electrical & Renewable Energy

Scored  
**4.8**  
out of 5  
on Trustpilot  
Trusted trader

**Which?**  
Trusted trader

Your LOCAL directory of services, businesses and community events



# ColourFence

**Professionally installed fencing, gates & railings**

Get in touch for a FREE, no obligation quote & survey

## ColourFence

- Made from Colorbond Galvanised Steel
- Virtually maintenance free
- Variety of colours and sizes
- Withstand winds of 130mph
- 25 year guarantee\*

## ColourRail

- A cost effective alternative to wrought or cast iron railings
- Variety of finishes & colours
- Bespoke sizes available
- 10 year guarantee\*
- Virtually maintenance free

## ColourGate

- Made from Colorbond steel
- Available in plain or in lattice top finish
- Heights up to 2.1m
- Perfect solution for privacy
- Automated option available

For a **FREE**, no obligation quote & survey  
Contact us on **T: 0800 644 4113**  
or visit **colourfence.co.uk**



\*full terms & conditions on website or on request.



*Dear Residents,*

'Tis the season to be jolly' and there are certainly plenty of local fairs, coffee mornings and lunches to get you into the Christmas spirit! Winterbourne Academy are inviting senior citizens to a free Christmas dinner celebration, see more inside, and book your spot.

And of course nothing says Christmas like a good sing-a-long, you can join in the 'Big Christmas Sing', attend one of the many local carol services - in church by candlelight or at the atmospheric Winterbourne Barn. Or if you would prefer to listen to some wonderful music, why not attend seasonal concerts by the Frampton Cotterell Male Voice Choir and Crossbow Singers.

For a full list of church Christmas services, please see the centre pages and we hope you enjoy our Christmas message from Revd Malcolm Strange.

If you have some time in the coming weeks, do visit - Ministering Angels: VAD Nurses from Frenchay exhibition, commemorating the centenary of World War One. Get a taste of what is on display in our article.

We very much enjoyed taking part in the 2018 Scarecrow Trail, congratulations to all who entered, the creativity was wonderful, find out who was voted best scarecrow in our report on the trail.

There is news from many more local groups throughout the magazine. If you have some positive local news to share or would like to see your local meeting or activity featured in 2019, please do get in touch, we are always delighted to hear from you.

Wishing you all a peaceful, happy festive season,

*Kerry  
& Jaci x*

[community@mattersmagazines.co.uk](mailto:community@mattersmagazines.co.uk) 01454 300900






**Independent Estate Agents**

**01454 540 200**  
[www.bundyandbond.co.uk](http://www.bundyandbond.co.uk)

From left: Kevin, Mary, Tina and Jane  
The Sales Team at Bundy and Bond

## New Look, Same Award Winning Service

*Proud to be independent with outstanding levels of customer care and award winning customer service. Come and speak to our friendly team about selling your property today.*

Free no obligation valuations Over 60 years combined experience  
Free professional photography for all our properties  
Successfully selling homes of all values in BS37, BS36 and surrounding areas

**Don't forget to mention Winterbourne & Frampton Matters when replying to ads! 3**



THE BIGGEST RACE DAY IN WALES!



**CORAL**  
**WELSH**  
**GRAND NATIONAL**  
EST. 1895

THURSDAY 27TH DECEMBER

TICKETS AVAILABLE  
NOW

**CHEPSTOW**  
RACING & EVENTS

CHEPSTOW-RACECOURSE.CO.UK | 01291 622 260



## Puddle Ducks December News

*All the latest from your local swim school*



Hooray, it's almost the holidays! We are really excited about Christmas and New Year, and so are our swimmers. Keep an eye on our social media to take part in our Christmas colouring competition, with some free lessons on offer as prizes, and some other special Christmas giveaways too.

As one of the areas longest-standing swim schools – 2018 has been our 10th anniversary – we teach 1,200 babies and children to swim beautifully, and independently, every week! Our classes are the perfect introDUCKtion to swimming!

What makes us different is that you can:

- Join our classes at any time, no need to wait for the start of term
- Stay with us from baby to age 10
- Use courtesy catch-up classes when you can't make a lesson
- Pay monthly and track your child's progress with your online MyPuddleDucks account.

### Make swimming your new year's resolution!

New Year is when lots of families choose to start swimming with us. If you've been thinking about bringing your baby or child along for lessons, why not give our friendly team a call (number below) for an informal chat about which class would be best for your little one?

In your area we teach all day on Sundays at nearby Winterbourne International Academy. You can start swimming with your baby at this venue from six months old, all the way up to 10 years of age.

For small babies, we recommend our Saturday classes at the gorgeously warm Penny Porter pool in Henbury, a 15-minute drive away. These lessons offer a great opportunity for mummies and daddies to bond with their little ones while you all develop your confidence together in the water.

### Christmas shopping

If your child or grandchild enjoys time in the pool, why not check out the Puddle Ducks online shop for some lovely gift ideas? Alternatively, our gift vouchers are perfect for that last-minute present as you can order them online for delivery directly to someone's inbox!

*Merry Christmas everyone, and Happy New Year!*

### Classes start again on Monday 7th January 2019.

To find out more, call Puddle Ducks on 0117 971 7165, or check class locations and times at <https://www.puddleducks.com/local-teams/bristol-bath>

Christmas is coming... Puddle Ducks

Swimming Gift Vouchers are a great gift idea!

[puddleducks.com/shop](https://puddleducks.com/shop)  
or call 0117 971 7165 to order



The club we know today as South Gloucestershire Hockey Club started its life in July 1946 and since then has continued to grow with three mens teams, two ladies and a mixed team.

We moved to Bradley Stoke Community School in 2013. Not only do we love playing hockey we are a social club on and off the pitch enjoying a few post match drinks and regular socials.

**The clubs biggest achievement is earning not one but two world records!**

In May 2011 the club set a new world record for the longest single hockey match – 31-hours – raising thousands of pounds for charity in the process.

Although the club lost their title in 2013 to Holcombe hockey club, in May 2015 South Glos played non-

stop for a staggering 50 hours, raising thousands for the Bristol-based Cots for Tots charity.

**2018/2019 Season Update** – With the first quarter of the season completed, South Glos Hockey club are off to a flying start with a total of 89 goals scored across the club! With 4 out of the 5 teams currently sitting within the top spots of their leagues, South Glos are continuing to go from strength to strength.

So far this season, we have welcomed 15 new members to the club who have got stuck in and enjoyed training, playing matches, mixed hockey, pub golf and a spooky Halloween social. Some of these have never picked up a stick before whilst others have been playing for many years.

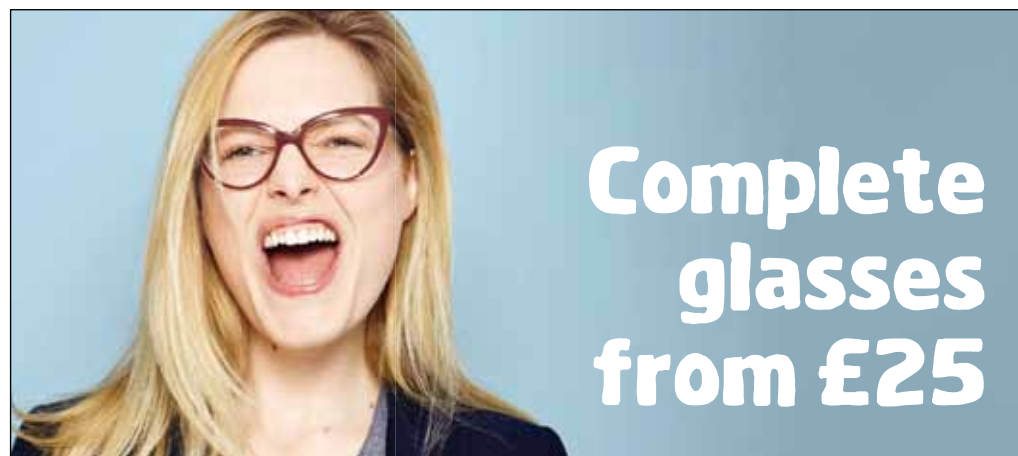
We have lots to look forward to including our Christmas tournament and Social where we will enjoy some food, drinks and dancing!

**Fancy Playing Hockey?** Our club welcomes players of all abilities, whether you're a little rusty or never picked up a stick please feel free to come along. We train on Tuesday evenings at Bradley Stoke Community School 8pm-9.30pm with league games played on Saturdays and mixed on Sundays.

If you want to find out more information please check out our website: [www.sghc.org.uk](http://www.sghc.org.uk)  
Facebook – South Gloucestershire Hockey Club  
Instagram – Southgloshockey



*'The key for any team is communication, timing and always being prepared- at South Glos we are always on point!'*



# Complete glasses from £25

**Book an eye test online**

**Bradley Stoke** Willow Brook Centre. Tel 01454 275 020



Includes standard single-vision lenses. Other lenses and Extra Options available at an additional charge. SKU 30687196. ©2018 Specsavers. All rights reserved.

## LIFE IS NOT ALWAYS PERFECT!

*Troubled by anxiety, depression,  
post-traumatic stress,  
lack of confidence & self-esteem,  
abuse, relationships, sexual identity?*  
*Let me help.*

**ANTHONY MAXOM**  
Person-Centred Counsellor  
Cognitive Behavioural  
Therapist

Member of the BACP



Comfortable, purpose-built, therapy room in Frampton Cotterell, South Gloucestershire.

FREE, initial consultation.  
Counselling sessions £40 per hour

**07951 216718**

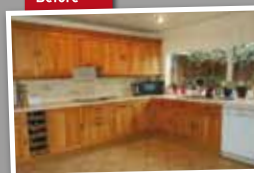
[anthonymaxom@aol.co.uk](mailto:anthonymaxom@aol.co.uk)

WEBSITE: [amaxomcounsellor.com](http://amaxomcounsellor.com)

## QUALITY KITCHEN FACELIFTS

## START THE NEW YEAR WITH A NEW KITCHEN

Before



- From doors to a complete kitchen
- Large choice of doors, worktops, appliances and accessories
- Free planning & design service

CALL FOR A FREE ESTIMATE:  
**0117 944 3223**  
[dreamdoors.co.uk](http://dreamdoors.co.uk)



Book your appointment now for installation January 2019

**DREAM DOORS®**  
NEW LIFE FOR OLD KITCHENS

Visit our showroom:  
11/12 The Promenade, Gloucester Rd,  
Bristol BS7 8AL

[checkatrade.com](http://checkatrade.com)  
Where reputation matters







## Enrichment Day at St Michael's Primary School

Learn • Care • Enjoy



Here at St Michael's Primary school we held our very first Enrichment Day. The idea for the day was to mix all year groups and provide a range of fun and exciting workshops for the children to take part in. These workshops were ran by our teachers, parents,

grandparents and our school Governors. We were able to provide a huge range of activities such as: corn weaving, floristry, photography, glass painting, African printing, hockey, gymnastics, cupcake decorating and many more!

The day was a resounding success, with children beaming from ear to ear and all their teachers too!

Some of the pupils are pleased to share their positive experiences with you below.

**Face painting and theatrical makeup** – At first we used face paints to create a tiger image and afterwards we looked at using different techniques to create a spooky theme. Some of us became spiders and witches! Our favourite part of the workshop was when we got to choose and complete our own design. We became a ninja turtle and a unicorn. We loved our day! **James and Eva**

**Glass painting** – We painted our own glass vases, after first creating stain glass windows. We used specialist paints to stop the paint from overlapping and seeping into one another. I really enjoyed this because we were able to be creative. I really enjoyed my day and would love to do it again! **Joseph**

**Camping** – We spent the day camping and developing our forest skills. We started the day by

collecting sticks (thumb, finger and match) for our camp fire. We played team games and created worm farms. Our favourite part of the day was getting dirty and digging and cooking over our camp fire! It was an amazing day! **Paul and Alex**

**We will be holding a second Enrichment Day in the summer and welcome any support from those with a talent or hobby they wish to share. Working alongside our school will bring a wide smile to anyone who wishes to join us...that we can guarantee!**



### Care to foster in Bristol?

Do you have a spare bedroom, patience, sense of humour and a real desire to help children and young people? We offer a generous allowance, professional training and great local support.

Capstone Foster Care needs carers for children of all ages but are particularly interested in hearing from people able to look after sibling groups or children over the age of 11.

### Foster for Capstone

The number of children in care has reached a record high, with 90 young people entering the care system each day, figures show.

Call 01454 423 820 or visit  
[www.capstonefostercare.co.uk](http://www.capstonefostercare.co.uk)

# CHOOSE STAFF ABSENCE INSURANCE YOU CAN DEPEND ON...

the  
education  
broker  
staff absence insurance



Only broker to  
compare 4 policies  
from 3 insurers



Cover for pre-  
existing illness  
as standard



Valid claims paid  
in an average of  
5 days



Physical and  
mental wellbeing  
services included

Get your quote today

Call: 0800 783 3500

Visit: [theeducationbroker.co.uk](http://theeducationbroker.co.uk)

The Education Broker is a trading name of Minton House Group Ltd.  
Registered in England No. 3397518.  
Registered office: 55 Bishopsgate, London EC2N 3AS.  
Authorised and regulated by the Financial Conduct Authority.





# News from the Floral Friends of Frampton



**Nisa donation** – Many thanks to Edwina at Nisa for another much needed donation from the Nisa *Making a Difference Locally* Fund. This will enable us to continue bulb planting around the village, as well as maintaining and stocking our planters, putting new plants in our much appreciated flower beds in Woodend Road, by Beesmoor Playing Field and the Triangle by the Rising Sun.

**Woodend/Beesmoor Wall Repairs** – Repairs have now been made to the concrete coping over the stone wall at Woodend/Beesmoor, thanks to funding from *Ecotricity* and *South Glos Member Awarded*

**Funding.** Plants which were removed prior to the repair work will be replanted, together with donated tulip bulbs over the next few weeks. So this much loved area will continue to bloom and raise the spirits of passers by. If anyone would like to help Floral Friends to plant and maintain this area of the village please let us know, we would love to hear from you.

**Frampton End bulbs** – After clearing two beds either side of the new Frampton Cotterell notice board, native bluebell and narcissus bulbs have been planted by a Floral Friends volunteer. This will make a lovely spring display to complement the



**BUBBLES DOG WASH**  
Dog and Cat grooming spa.

- No Cages • Nail Clipping • Ear Cleaning
- Scissoring & Clipping • Hydro-Bath

**Professional Affordable Luxury for your pet**

**Call 01454 856159**  
E: [info@bubblesdogwash.com](mailto:info@bubblesdogwash.com)  
[www.bubblesdogwash.com](http://www.bubblesdogwash.com)  
unit 2a, Mays Hill Industrial Estate, Frampton Cotterell.




beautiful pictures of Frampton Cotterell, created by children from Watermore Primary School.

**Bulb Planting** – Floral Friends volunteers have planted more daffodils along Church Road to brighten up the spring, whilst crocuses and tulips were planted at the Triangle to make a patriotic spring display. Many thanks to all who donated bulbs this year – no more are needed now as we have completed our bulb planting around the village.

**Youth Club Commemorates Women being given the Vote** – Members of the Youth Club based at the Bickeridge Centre have used some of the planters to commemorate the 100th Anniversary of the extension of the vote to (some) women. The plants, supplied by Floral Friends, were in the Suffragette colours of white (purity), purple (loyalty and dignity) and green (hope).

**Our Little Red Riding Hood...** Joined the Scarecrow Trail round the village during half term week. We hope you enjoyed the Trial and seeing her on the bench outside the Church.

**Christmas Coffee Morning – 28 November** – Join us on Wednesday 28 November when we're holding a Christmas Coffee Morning and Gift Sale, at the Bickeridge Centre. Browse the sales tables for hand made gifts, stocking fillers, cards and

decorations and enjoy coffee and cake in the café. Doors open at 9.15am.

## Flower Festival June 2019

– We're organising a Flower Festival with the theme of favourite children's book or character from a children's book, for 15/16 June 2019. Much more information to follow – but make a note of the date!

**We Need Help!** If you could help with planting or maintaining a planter, we would love to hear from you. You don't have to be a gardening expert, just happy to lend a hand and help us to make our village beautiful. Please email us at [floralfriendsofframpton@gmail.com](mailto:floralfriendsofframpton@gmail.com)

**Remember – all our latest news is available at** <http://fframpton.wixsite.com/frampton-cotterell>



Not just shopping in the heart of the community

**WillowBrookCentre**

Great shopping in the heart of the community  
[willowbrookcentre.co.uk](http://willowbrookcentre.co.uk)



Great value in the heart of the community

**WillowBrookCentre**

Great shopping in the heart of the community  
[willowbrookcentre.co.uk](http://willowbrookcentre.co.uk)





# Winterbourne's Medieval Barn – News & Events



Over a 1,000 members of our community came together to celebrate a wonderful Orchard Harvest Day, this October. Everyone made the most of the and warm dry weather. From the comments left, people really enjoyed the historic barn, the food and drink, the music and entertainment, and all the different activities and stalls.

There are a few more festive events still to come in 2018 (plus the free lectures which are already fully booked!) – a Christmas Craft workshop using beeswax and herbs, Wreath Making and the annual Carols in the Barn.

**Christmas Gift Making Workshop** takes place on **Saturday 8 December**, 11.00am–1.00pm. Immerse yourself in Christmas crafts, family fun and enjoy the opportunity to make some natural, ethical festive gifts.

Please note, the December *Christmas Wreath Making* workshop is now fully booked.

**Carols in the Barn** – These much-loved community performances take place on 15 and 16 December, 3.30–5.00pm.

The events start with mulled wine and warm mince pies, followed by everyone singing carols as they

watch the Christmas story unfold – dramatised by St Michael's Church 'players'.

**Apple Grafting in 2019** – Looking ahead to the new year, there will be another apple-grafting workshop in early March, for which bookings are now open. This well-received and popular workshop will be run by Ben Raskin, Head of Horticulture at the Soil Association, a very experienced horticulturist and an excellent tutor. For those green fingered people who are difficult to buy for, this course makes an excellent Christmas present.

For further booking/price info on all of the workshops/events mentioned, please visit our website or Facebook page.

We would like to thank all of you who have supported the Barn this year and wish you a wonderful Christmas.

[www.winterbournebarn.org.uk](http://www.winterbournebarn.org.uk)

You can also follow us on Facebook and Twitter.

**Winterbourne Medieval Barn,  
Church Lane, BS36 1SE**



**For great Christmas value!**

- Woolley Park (Bath) free range turkeys, geese and ducks
- Copas organic and free range turkeys
- Usk Vale boneless turkey crowns stuffed to order
- Gift vouchers • Set boxes



**Molesworths Frampton**  
147 Church Road,  
Frampton Cotterell BS36 2JX  
01454 777 337

**Molesworths of Henleaze**  
101 Henleaze Road,  
Bristol BS9 4JP  
0117 962 1095

[www.henleazebutchers.co.uk](http://www.henleazebutchers.co.uk)

**You've got the skills to foster...**

you may not know it yet

**We're looking for foster carers for children of all age groups.** If you have a spare room, childcare experience and the time, we'd love to hear from you.



**"I WISH WE'D DONE IT YEARS AGO"**

Brian, Foster Carer

☎ 01454 866423

✉ [fostering@southglos.gov.uk](mailto:fostering@southglos.gov.uk)

[www.fostersouthglos.org.uk](http://www.fostersouthglos.org.uk)



**South Gloucestershire Council**



## Community Noticeboard

For free listings contact  
community@  
mattersmagazines.co.uk

### Frampton Cotterell Royal British Legion, Ryecroft Rd.

#### What's on.....

Every Thursday night Bingo, 8pm.

Every Saturday night Bingo, 8pm, then dancing to live bands (modern, ballroom sequence and much more) from 8.30.

Details on RBL website. Entry £4.50

### Winterbourne & District Flower Arrangement Society

We would love to welcome new members and visitors. Our meetings are held at St Michaels Room, High Street, Winterbourne 7.30pm start, with doors open from 7.00pm.

We enjoy visiting demonstrators and practical, hands on sessions, on Thursday evenings on various dates.

For further details please contact: Celia – 01454 776753 • winterbourneflowerclub.com

### The Stokes Phoenix Club

Meet every first Tuesday of the month, 10am–12 noon at the Community Hall, Little Stoke Park.

#### Next Meeting:

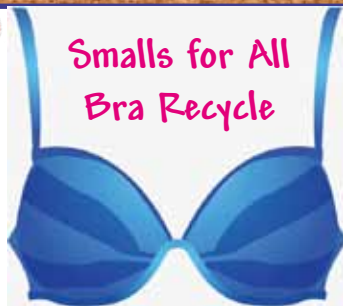
4 December – Mummies of Winterbourne Down & Christmas Buffet Lunch

Yearly subscription is £15. Monthly subs £2.

New members would be very welcome.

For more information please call our Chair, Rosemary Davies on 01454 614 474 or just come along to one of the meetings.

### Smalls for All Bra Recycle



BRAS! If you're having a clear out please note that most charity shops don't take bras, but many are too nice to throw in the bin.

Smalls for All is a UK based charity that sends unwanted bras to African villages to improve hygiene and prevent the rape of young girls and women, as wearing a bra in some villages is a sign of wealth, status and power.

If the bra is too tatty they recycle the material and metal to raise money to buy underwear. So if you're throwing out your old bras, whatever state they are in, please save them from going to landfill and send them here instead:

Smalls for All, 108 Buchanan Crescent, Elbourn, Livingston, EH54 7EF

## WADCA Community Centre NYE 2018 SILENT DISCO



FAMILIES WELCOME

WADCA's first ever 'Silent Disco', 3 channels of music to choose from. Inc: Pop from the ages, Soul and Dance.

Tickets just £15 each  
(£7.50 for Children)

In Adv. ONLY! Inc: Headset and nibbles

<https://www.ticketsource.co.uk/date/575930>

Or direct from WADCA:  
Wadley's End Road, Winterbourne, Bristol, BS36 1QG  
Tel: 01454 776268. e-mail: [caulwinterbourne@gmail.com](mailto:caulwinterbourne@gmail.com)

Doors open  
8.15pm  
at  
12.30am

WADCA  
Community Centre

### Christmas Coffee Morning and Gift Sale Brockridge Centre, Frampton Cotterell

Wednesday 28<sup>th</sup> November 2018  
9.15 a.m. – 12.30 p.m.



Join us for coffee and cake; browse the stalls for stocking fillers, gifts, Christmas decorations, cards.

### Winterbourne Down & District Horticultural Society Meetings

All Saints Church Hall, Church Road,  
Winterbourne Down, BS36 1BX, 7.30pm

Meeting every second Tuesday  
of the month. Visitors welcome.

### Frampton Cotterell Male Voice Choir Christmas Concert



in

Zion United Church  
Frampton Cotterell  
Friday, 14 December 2018  
at 7.30pm  
Tickets £5

available from Derek Hobbs (07802329805),  
other Choir Members, or at the Door

## Comedians and Carols

Saturday 15 December

£10 (£8 Concessions)



Paul Kerensa



Dominic Holland



Steve Price



Stephen Cookson

Four of the UK's best comedy acts with their take on the Christmas Story in an evening of Festive entertainment!

Enjoy this feelgood mix of stand up comedy and sing-a-long Carols in this unique show!

St Michael's  
Centre Events

[stmichaelsbristol.org/smevents](http://stmichaelsbristol.org/smevents)

### CHRISTMAS ALL AROUND THE WORLD

ENJOY A PROGRAMME OF  
FESTIVE MUSIC WITH

THE CROSSBOW SINGERS  
and guest artists

THE FRAMPTON SHANTY MEN

Monday & Tuesday  
10<sup>th</sup> & 11<sup>th</sup> DECEMBER, 2018, 7.30 PM

CROSSBOW HOUSE, SCHOOL ROAD, FRAMPTON COTTERELL



TICKET AT £6 FROM:

MONDAY 10<sup>th</sup> - ROSE 01454 772675  
TUESDAY 11<sup>th</sup> - MARY 01454 887885



## Great Western Air Ambulance Charity takes up Tenancy in New Air Base

Great Western Air Ambulance Charity (GWAAC) have taken up tenancy of a new air base in Almondsbury. The charity will share the facility with the National Police Air Service (NPAS), and currently have a ten year tenancy agreement. Their helicopter took off from the new base for the first time at the end of October, taking the medical team to a critical incident.

The move is a huge milestone for the charity, who have been operating from a hangar on Filton airfield which was one of the oldest in the country.

In a move which would ensure stability for the life-saving charity, the landlords of the new base have offered GWAAC the opportunity to purchase the facility at a significantly reduced price.

GWAAC Chief Executive Anna Perry explains: *"We're thrilled to have moved into the new air base at Almondsbury, however with our current tenancy agreement we could be asked to leave again after ten years. This could be extremely disruptive to our service. Owning our air base will ensure we can continue to carry out our life-saving work well into the future. It's unlikely we will have the opportunity to buy a facility like this again."*

Russ Woolford, Assistant Operations Director for the National Police Air Service (NPAS) said: *"We are delighted that NPAS Almondsbury is now operational. The state-of-the-art air base, including a 520m lit Final Approach and Take Off (FATO), is a great addition to our national network of bases. NPAS Almondsbury is operational 24/7/365 and our crews will regularly support police colleagues on the ground to find missing people and search for suspects. Air support is a vital tool available to police forces and flying at average speeds of 138mph crews will also help bring many other 'crimes in action' to an end, to help keep communities safe. NPAS Almondsbury replaces the existing NPAS Filton site which is now under redevelopment for housing."*

Earlier this year, GWAAC launched an urgent appeal to help them raise the additional £1.25 million needed to fund the purchase. They are half way towards their target, but still have a long way to go.



**As a charity they rely on generous donations from members of the public to stay operational. Excitingly, if they can raise another £315,000 then a generous local organisation has pledged to double this money!**

GWAAC Lead Critical Care Doctor Ed Valentine continues: *"The whole crew are really pleased to have moved into our new hangar, which is warm, dry, and has all the facilities we need to train for and deliver our service. We operate at the forefront of pre-hospital emergency medicine, and are here for every single person across the region. Owning this base would mean that we can continue to expand and continue our work long into the future. We're extremely grateful to everyone who has donated so far, and would urge anyone who is able to contribute to the Buy Our Base appeal to do so."*

**To make a donation visit [www.buyyourbase.com](http://www.buyyourbase.com)**

### Hards Tax Services

**Chartered Tax Advisers and Chartered Accountants**

- Self assessment tax returns
- Small business accounts
- Payroll and VAT
- Tax planning advice, including property taxes

*For a free no-obligation appointment, contact Adrian Hards on: 01454 777218 or 07971 133730*  
email: [adrian@hardstaxservices.co.uk](mailto:adrian@hardstaxservices.co.uk)



Ashley Rodwell Insurance is a brokerage providing bespoke insurance solutions for clients across Bristol and the surrounding area.

The company began life in 1983 and although the original principals have now handed over the reins, the company has continued to go from strength to strength under the stewardship of Sev Singh-Digpal ensuring the underlying values clients have come to expect over the years are retained.

Your home, your personal possessions and your car are all very important to you, which makes them very important to us. Over 90% of our personal insurance policies are renewed so we are confident that we offer products that provide the protection you need at sensible prices.

Ashley Rodwell make no apologies for offering an old fashioned personal service whilst implementing the best features of the modern technology available. We concentrate all our efforts in building strong, lasting relationships with our clients, who are able to talk to their account handlers all the way through the policy year, not just at inception or renewal.

Cheap products don't always offer the best cover or provide you with the financial security and support you need when the worst may happen. We work closely with the best insurers to ensure the products they provide are at the best possible price with the cover that you really need and the service you deserve, should you ever need to make a claim.

***When all is said and done, insurance is only a promise on a piece of paper.***

***It's who makes the promise that counts!***

Call us for a no obligation quote now on 0117 9604 101 or alternatively come and visit our new offices at Dorset House, Downend Road, Kingswood, Bristol, BS15 1SE



**Ashley Rodwell**  
INSURANCE  
est 1983

**Providing the cover you need with a service you deserve.**



**Your home, your personal possessions and your car are all very important to you, which make them important to us.**

**When all is said and done, insurance is only a promise on a piece of paper. It's who makes the promise that counts!**



**For a competitively priced quote please call one of our team on 0117 9604 101 or alternatively come and visit our new offices at Dorset House, Downend Road, Kingswood, Bristol, BS15 1SE**



**Come and join the Spirit Health Club  
Bristol this festive season!**

**Why wait until January to start your fitness journey  
when you can join today and get the rest of 2018  
free of charge on your membership\*.**

**Looking for a bit of motivation?** There's nothing better than a new personalised workout routine to boost your levels. Let our fully qualified fitness team inspire you with something new and enjoy getting back into shape. You can focus your time in the gym, add in a swim, relax in the sauna or mix it up with a fun range of classes.

Call now on **0117 9701462** to speak to one of our friendly team. We'd love to help you reach your health & fitness goals.

*\*Terms apply. Ask in club for details.*



**Spirit Health Club is part of the Holiday Inn Bristol Filton, Filton Road BS16 1QX (by UWE)**



## **The Vintage Box**

***Big Enough to Deliver, Small Enough to Care***

We are a local catering company, founded by partners Sam and Rachael. Our dream was always to make other people's come true, applying a caring and personnel touch to everything we do, with quality always at the forefront. We're surrounded by some of the finest produce here in the South West, and using local sourced ingredients, ensures not only can we give back to the local economy around us, but deliver the best food available to our clients.



### **Vintage afternoon Tea**

We offer a delivered afternoon tea, complimented with vintage crockery. We can offer a fully managed service with waiting staff, who will wait on you for the day. Or you can opt for a delivered service - we drop everything to you in the morning of your event made fresh, and collect the washing up later! We even do a Gin and Tonic reception too! Prices Start from just £12.50 per person.

### **Weddings and Events**

We will work closely with you to help create your special day, offering bespoke packages that are tailored to you. Or we can simply come along with our lovingly converted bar horsebox to just look after the bar and reception drinks. We also have our lovingly converted kitchen horsebox, and can help provide anything in particular you would like to feature on your day, or we can suggest options. Enquire now for a complimentary consultation and quote.

### **Festival and Mobile Event Catering**

We have two converted horseboxes: our gin bar, which can also double up as a full bar with draught, and serves many other premium products too; and our duck box, serving shredded duck wraps or salad. Both have been a popular hit already with dates already going quickly for 2019!

• [www.thevintagebox.co.uk](http://www.thevintagebox.co.uk) • 07526 727181 • [info@thevintagebox.co.uk](mailto:info@thevintagebox.co.uk)

• Follow us on twitter @TheVintageBox2

**THE AERIAL MAN**  
TV Aerial and Satellite Specialist  
*Affordable Prices - Reliable Service*

- Digital Aerials
- Sky Work
- Poor Reception Problems
- Humax Recorders
- Fully Guaranteed
- Free Quotes
- Additional TV Points
- TV Sales
- Repairs
- OAP Discounts

**01454 660 046**  
**07818 413 451**  
[www.theaerialman.co.uk](http://www.theaerialman.co.uk)

Freesat Freesat Freesat  
Which? Trusted Trader

## **The Vintage Box**

***Big Enough to Deliver,  
Small Enough to Care***

• Festival and Mobile Event Catering  
• Vintage afternoon Tea • Weddings and Events

[info@thevintagebox.co.uk](mailto:info@thevintagebox.co.uk)  
Twitter: @TheVintageBox

**07526 727181**  
[www.thevintagebox.co.uk](http://www.thevintagebox.co.uk)



## News from Frampton Cottrell WI

Our September talk was by Nicola Eaton from The Really Expensive Chocolate Company, who is locally based. Nicola came in to tell us about luxury chocolate making, and she gave us a live demonstration on how to make truffles, and moulded chocolates for members to sample on the night. The chocolates were delicious needless to say – what a treat!

Our October talk was by Alan Vowles – back by popular demand! This time to give us a fascinating talk about the History of the Police Force. In fact, this last month, our WI has spent quite a lot of time dealing with the right (and wrong!) side of the law as we also had a really interesting group visit to Shepton Mallet prison for a jailhouse tour.

The original prison was built in 1610 and closed officially in 2013. It's steeped in history, with most of the existing buildings being around 200 years old. It was even occupied by the Kray twins at one stage in 1952, whilst they were awaiting court martial for



### Specialist Bicycle Build, Servicing & Repair

"It's all about the bike..."

From Mountain bike to Racers ~ Kids bikes to Commuters we will come to your home or place of work and keep your bike in peak condition.

- Servicing • Repairs • Bike Build
- Collection/Return • Mobile Service

Tel: 01454 838144 ~ 07870 574349

www.rule4cycles.co.uk f ~ rule4cycles



an assault on an NCO, and being absent without leave.

The prison is notorious for being haunted, with many reported sightings and paranormal experiences being recorded. Even our tour guide, who was a former prison officer there, had personal experiences of one of the poltergeist spirits in residence! A perfectly timed trip for Halloween!

Our Annual Members meeting is on Tuesday 28 November – if you read this in time, do come along if you fancy finding out more about our WI. There will be a review of the year's activities as well as the election of committee for the next 2018–2019 season. There will also be a Bingo Night social in

December, just before Christmas – look out on our Facebook page for confirmation of dates.

**Visitors and new members are welcome to our monthly meetings at St Peter's Hall on School Road at 7.45pm, on the fourth Tuesday of the month.** There is a charge of £2.50 for the evening and any new members can also join by paying a membership fee. Special interest groups that meet separately including a book club, craft group, choir and our skittles and darts teams.

**Please search FramptonCottWI to find out more, and to like our Facebook page.**



## be hot! with Slimming World

### Monday

**Frampton Cottrell**  
Watermore Primary  
School (Infants),  
Woodend Road,  
(Opp the Bickeridge Centre)  
5.30 & 7.30pm  
Tel: Jude  
07968 426809

### Tuesday

**Winterbourne**  
The Greenfield Centre  
Park Avenue  
9.30am, 11.30am  
5.30pm & 7.30pm  
Tel: Frankie  
07519 347243

### Wednesday

**Frampton Cottrell**  
Frampton Cottrell C of E  
Primary School  
7.30pm  
Tel: Lisa  
07815 759118

### Friday

**Coalpit Heath**  
The Manor Hall  
Coalpit Heath  
9.30am  
Tel: Lisa  
07815 759118

**Facebook Page:** Frampton Cottrell and Winterbourne Slimming World

**slimmingworld.co.uk** f t i 0344 897 8000



Pranic Healing

Tibetan Head Massage

Massage

Reflexology

Call: 01454 626439 / 07872 440787  
www.justyouholistics.co.uk

**Lisa hairstylist**  
**Mobile Hairdresser**

30 years experience  
Daytime appointments only

**07919 527 411**

CHRISTMAS SPECIAL

**BEAUTY PLUS**  
*By Myriam*

Give the Gift of relaxation this Christmas!

Treat your loved one to a pampering Christmas gift voucher and receive **10% extra** when you spend £50 - £99 or **15% extra** when you spend £100 or more

For more information, call us on:  
**01454 776938 / 078546 08889**  
147 CHURCH ROAD FRAMPTON COTTERELL BS36 2JX

## News from - Winterbourne Down WI

Our WI had a very interesting and enthusiastic speaker called Peter Davey who gave us an illustrated talk on the Clifton Rocks Railway.

He is a member of a small group of people who have discovered, and slowly cleared the funicular railway running from Hotwells Road at the bottom, up to the top of the cliff, coming out by the now named Avon Gorge Hotel. The Group have found old turnstiles that were used, two wheels which tram wires went round, old lamps and many other articles.

George White, a successful business man was the first to suggest to the Merchant Venturers that a funicular railway be formed but this was initially turned down and then in later years was accepted.

We were shown photos of the two stations that were built, the tunnels that were mined. The grotto which is to one side of the Hotwells station, where many people came to take the spa water which was at a temperature of 76 degrees! This actually didn't taste very good and made people ill. The spa water still runs into the river today.

We were shown a picture of the Bristol Rocks tram tickets. It cost 1d to go up and half a penny to go down! During the War the BBC positioned itself in the Clifton Rocks and people came to sleep in the tunnels for safety.

The talk was most interesting and entertaining.

**We meet on the first Thursday of each month and visitors are most welcome to join us in All Saints Church Hall, BS36 1BX, at 7.30pm.**



## The Crossbow Singers' Christmas Concert

**Monday 10 and Tuesday  
11 December, 7.30pm**

**Crossbow House, School Road,  
Frampton Cotterell, BS36 2DA**

The theme this year is 'Christmas all Over the World'. The choir will be singing a variety of Christmas music originating from a number of different countries, sometimes in the language of that country!

They are also delighted to welcome the fabulous Frampton Shanty Men, who will be performing during the concerts. If you have seen them before, you will know just how good they are, and, if you haven't, then you are in for a treat!

Please go along and enjoy joyful music and song to start your Christmas Season.



Please support your local choir.

**Tickets**, at just £6.00, can be purchased from Rose (01454 772675) for Monday 10, or from Mary (01454 887885) for Tuesday 11. The choir look forward to seeing you there!



## Do you have the time, energy, motivation and a spare room to be able to support a vulnerable adult in your own home?

ategi South Glos are looking for people of all ages and backgrounds to provide care and support **in their own homes** to people who need support. If you feel you could share your life with a disabled or vulnerable person **within your own household**, we would like to hear from you. We provide full training, ongoing support and good rates of pay when you are matched with someone who suits your circumstances and lifestyle.

Contact the ategi Shared Lives Team for more information  
T: (0117) 332 1030 @ategiSouthGlos E: SLSSouthGlos@ategi.co.uk  
**www.ategi.org.uk**

**Shared Lives Scheme  
South Gloucestershire**  
"Supporting people to live their lives"



## Community Connectors Project Grants

*Building stronger connections in South Gloucestershire*

Community Connectors have funding until 31 March 2019 to assist the formation of local groups which enable

**people to be more connected to their local community. The Project helps to identify the interests and priorities of local people, and supports them in developing new activities that tap into this.**

Community Connectors Project Grants are normally up to £200, and aim to help small groups make their activity a success. Grants cannot be used for wages or for capital projects like building work, but could provide small items of equipment like perhaps a tea urn for social gatherings or a CD player for exercise classes. A minimum of four people from the local area must benefit from each project. Projects may be for the general community or specifically to benefit a particular section, such as older people, toddlers, people with a disability, young parents, teenagers, people living alone, etc. They could offer opportunities for a sport or physical activity, or provide social contact for people who are feeling lonely, or help people learn to do something new.

If you are looking to start a new group, or you run an existing community group needing a small grant for a specific purpose, contact Hilary Jay, Wellbeing Worker, on 07792 495367 / hilary.jay@curo-group.co.uk who will give you a grant application form.

As a Community Connector, she has already assisted with the formation of several groups in this area, and has funding to start a further six community groups, or assist existing groups, with small funding grants.

Volunteer Coordinator Sandy Corke helps with the initial setting up of new groups. When the group seems well established, Community Connectors then pull out and leave it to the community members themselves to run their group. Sandy has funds to DBS check volunteers in new groups if that is necessary.

**The Community Connectors Project Grants have to be allocated before 31 March 2019 so people are urged to apply as soon as possible before 31 January. The funding is ultimately provided by South Glos Council.**



Wednesday  
12th December  
**12:45pm**

**BE OUR GUEST**  
Senior Citizens  
Christmas Celebration

Winterbourne  
Academy

*Sherry welcome and 2 course-Christmas Dinner*

**This event is FREE but places must be booked in advance please**

*Any surplus funds raised through sponsorship will be donated to Age UK*

**OVER 65?** If you're over 65, or know someone who is, please contact us to book your place at [Nichola.coles@winterbourneacademy.org.uk](mailto:Nichola.coles@winterbourneacademy.org.uk)

With thanks to the following:

**WillowBrookCentre**  
Great shopping in the heart of the community

In Partnership with  
**pabulummm**



# #FollowTheStar

## CELEBRATE CHRISTMAS

### ALL SAINTS WINTERBOURNE DOWN

**Sunday 16 December, 6pm**  
CAROL SERVICE with BETHESDA

**Christmas Eve, 6pm**  
CRIB SERVICE

**Christmas Day, 9.15am**  
HOLY COMMUNION (Said)

### ST MICHAEL'S WINTERBOURNE

**Saturday & Sunday 16 December, 4pm**  
CAROLS IN THE BARN  
see [www.fromesidechurches.org.uk](http://www.fromesidechurches.org.uk)  
for details

**Friday 21 December, 6.30pm**  
CAROL SERVICE

**Christmas Eve**  
4pm, CRIB SERVICE  
11.30pm, MIDNIGHT MASS

**Christmas Day**  
10.30am, FAMILY COMMUNION

### ST JAMES THE LESS IRON ACTON

**Sunday 16 December, 6.30pm**  
CANDLELIT CAROLS

**Christmas Eve, 4pm**  
CRIB SERVICE

**Christmas Eve, 10.30pm**  
CANDLELIT COMMUNION

**Christmas Day, 9.30am**  
HOLY COMMUNION

### ST PETER'S FRAMPTON COTTERELL

**Sunday 9 December, 4.30pm**  
CHRISTMAS TREE SERVICE

**Sunday 16 December, 6pm**  
CAROL SERVICE

**Christmas Eve, 4pm**  
CRIB SERVICE

**Christmas Eve, 11.30pm**  
MIDNIGHT MASS

**Christmas Day, 10.30am**  
FAMILY COMMUNION

## THE CHURCHES TOGETHER in FRAMPTON, COALPIT HEATH & IRON ACTON



Wish you and your loved ones a Happy Christmas

We hope you will celebrate and enjoy time with those you love.  
At Christmas we remember that God chose to come and live among us.  
Make it special by sharing with someone who's struggling.

Community CAROL SINGING: Sat 15<sup>th</sup> Dec 10.30-11.00am Nisa Stores  
Sat 22<sup>nd</sup> Dec 10.30-11.00 am Poplar Farm Shop

### SALEM METHODIST WATLEY'S END

**Sunday 2 December, 10.30am**  
GIFT SERVICE WITH CHRISTINGLES

**Wednesday 5 December, 10am**  
CHRISTMAS COFFEE MORNING  
**Sunday 9 December, 4 pm**  
REMEMBERING SERVICE – A short  
service to remember our loved ones

**Wednesday 12 December, 7.30pm**  
"THE GREATEST GIFT OF ALL"  
A musical nativity by Tim Lewis and  
Sheila Furneaux

**Friday 15 December, 7.30pm**  
A PROGRAMME OF CHRISTMAS MUSIC  
by Keynsham Brass Band

**Saturday 22 December, 11.30am**  
CAROL SINGING in Flaxpits Lane

**Sunday 23 December**  
10.30am, NATIVITY SERVICE  
6.00pm, CAROL SERVICE

**CHRISTMAS DAY, 9.15 am**  
CHRISTMAS MORNING FAMILY SERVICE

### St Saviour's COALPIT HEATH

**Sunday 16 December, 6.00pm**  
CAROL SERVICE

**Sunday 23 December**  
8.00am & 10.00am HOLY COMMUNION  
6.00pm, BLESSING OF LIGHT &  
EVENING PRAYER

**Christmas Eve**  
5.00pm, CRIB SERVICE  
11.30pm, MIDNIGHT MASS

**Christmas Day**  
FAMILY COMMUNION, 10.00am

### ZION FRAMPTON COTTERELL

**Sunday 16 December, 10.30am**  
LEGO NATIVITY

**Sunday 23 December, 6.00pm**  
CANDLELIT CAROL SERVICE

**Christmas Eve**  
4.30pm, ANGELS AWARE:  
Christmas Puppets Carols  
11.15pm, COMMUNION

**Christmas Day, 10.30am**  
CELEBRATING CHRISTMAS TOGETHER



# Charity Christmas Fair

On Sunday 2nd December the West of England MS Therapy Centre are holding our Christmas Fair from 12pm-4pm; all proceeds will be coming direct to the MS Therapy Centre.

Our members and volunteers will be running the stalls, many of which will be hand crafted items so the perfect chance to stock up on those stocking fillers and presents.

Our Oxygen Chamber will become Santa's Grotto so bring the kids along to meet Santa and some of his Elves who will give out a little Christmas gift.

Why not try out our Wine or Water stall, this one is always good for a giggle, or for a sweeter tooth try our chocolate tombola. Pick up some books, gift sets, Christmas crafts, Bric a Brac, jewellery and enter our raffle. After all of that why not sit down and enjoy some well-deserved tea and homemade cakes!

We also have Christmas carols performed by local girl Abbi who attends Patchway Community School and some Line Dancing performed by Sarah's Side Kicks.

The West of England MS Therapy Centre has been caring for people with Multiple Sclerosis, their families and carers since 1985. MS is a disease affecting the central nervous system and is the most common cause of disability in young people in the UK today.

It costs around £380,000 to keep the Centre running every year and currently less than 1% is received from statutory funding so events like this are essential for the continued success of the centre.

Grab your family and friends and join us in the festive fun on Sunday 2nd December from 12pm-4pm at The West of England MS Therapy Centre, Wheatfield Drive, Bradley Stoke.



## SUNDAY 2<sup>ND</sup> DECEMBER

Visit Santa in his Grotto

# Christmas

F

A

I

R

12 noon until 4 pm

STALLS | CRAFTS | RAFFLE | LIVE MUSIC

FREE ENTRY | HOMEMADE REFRESHMENTS

The West of England MS Therapy Centre, Wheatfield Drive, Bradley Stoke  
Registered Charity No: 801155

## Christmas Message

Dear Friends,

As I am sitting in my study writing my Christmas letter, I am looking out of the window at the first frosts of winter. The sun and warmth of a Spanish beach seem light years ago as I peer into the swirling mist, trying to spot a deer to lift my spirit, as I prepare to face the day!

In a few weeks we will be in the full swing of the Christmas celebrations. Advent is just around the corner and then the countdown really does begin. One of the things I love about Christmas is the Church bells ringing out around the Benefice.

There is something magical about bells and Christmas. I am sure many of us have that picture in our minds of snow filled lanes, children and families wrapped up with scarves and woolly hats, sporting colourful wellington boots and being called to worship on Christmas day by the bells of the Parish Church. You can't beat that wonderful melody ringing out in the crisp winter evening air, calling the community to come and join in the candlelit carol services, midnight mass and the family services on Christmas morning.

John Betjeman often referred to bells and in his famous poem 'Christmas' he opens with the line 'The bells of waiting Advent ring'. In a later verse he writes this:



### Families doing church and having fun!

Christ-centred, for all ages, based on creativity, hospitality and celebration.

Messy church is about getting to know God and his family better. We get to know God by exploring the bible, through a wide range of hands on activities. We get to know each other as we share our own stories over a meal, maybe a jacket potato or a sandwich and cake. God talks about us enjoying life in all its fullness, so we aim to create sessions which are packed with fun. Why not come along to this new initiative and enjoy an afternoon of fun, games, craft and activities, followed by a meal and a praise service.

**Future Dates: 15th December 2018, 19th January 2019**

All Saints Church Hall, Church Road,  
Winterbourne Down BS36 1BW

[fromesidechurches.org.uk](http://fromesidechurches.org.uk)



**CAROLS IN THE BARN**  
**Saturday & Sunday 16 December, 4pm**

*'And girls in slacks remember Dad,  
And oafish louts remember Mum,  
And sleepless children's hearts are glad.  
And Christmas-morning bells say 'Come!'*

For Betjeman, a devout Christian, the bells were drawing people to discover the truth of the Christmas story, that God had become a human being in the person of Jesus, bringing a better way for his creation, one filled with hope, joy, love and peace. In this child, wrapped in swaddling clothes, found in an ox's stall, was the pathway to salvation and the gateway to God's Kingdom. As he so brilliantly puts it in the next verse:

*'And is it true? And is it true,  
This most tremendous tale of all,  
Seen in a stained-glass window's hue,  
A Baby in an ox's stall?  
The Maker of the stars and sea  
Become a Child on earth for me?'*

So, when you hear the bells ring out this Christmas, calling you to Church, please do come and join us as we gather in the heart of our community to celebrate once again God's wonderful gift to us, the gift of life. In an era of 'fake news' let's hold on together to the eternal truth that belief in God holds for people of faith throughout the whole of our world, 'The light shines in the darkness and the darkness has not overcome it'.

**Happy Christmas!**

**Revd Malcolm Strange**  
**Rector of the Fromeside Benefice**



The Parishes of Frampton Cotterell, Iron Acton, Winterbourne & Winterbourne Down, in THE DIOCESE OF BRISTOL



## Support Buddy Required

### Support Buddy (Female\*) Required in Frampton Cotterell / Yate area Part-time Hours (8 per week)

I am a bubbly 13-year-old girl who loves animals, being active and seeing my friends.

Mum and I are looking for a Support Buddy to help me pursue all of my day to day activities and leisure pursuits. I have Cerebral Palsy, which means I have difficulty walking and using my hands and therefore I use a powered wheelchair and assistive technology to help me be independent.

I have a passion for horse-riding, so you would need to be able to help me at the stables and love horses too!

Other areas that I need help with are completing my homework and therapy exercises, personal care, taking me to boccia, going swimming, cycling and baking.

If you are interested in working with me 8 hours a week during term time, on Tuesday and Thursdays from 15:15 – 19:15 and extra hours during the school holidays, it would be great to meet you!

We live in the Frampton Cotterell / Yate area.

Rates of pay: £13.50 per hour.

Two excellent references and an enhanced DBS check will be pursued.

**Please apply to –**  
**info@northstarcm.co.uk,**  
**or call 01908 887047**

*Regarding a female\* support worker to work with the client, "Gender is considered to be a genuine occupational requirement in accordance with paragraph 1 of Schedule 9 of the Equality Act 2010"*



## Scarecrow Trail 2018

Winterbourne & Frampton Matters very much enjoyed exploring the 2018 Scarecrow trail, discovering new, imaginative sculptures at every turn. The favourite, Fairy Tale theme was brilliantly interpreted throughout the village, we hope you enjoy some of our favourites.

**HARBORD**  
OPTICIANS

Welcome to Mike Harbord Opticians - a family practice in Winterbourne Village.

Friendly, personal service and advice.

Full Eye Examinations and Retinal photography.

Qualified Optometrists and Dispensing Opticians.

A wide range of spectacles from NHS to handmade and bespoke frames.

Call today for an appointment

**01454 775530**

3 WHITEGATES, FLAXPITS LANE, WINTERBOURNE BS36 1JX



Organiser Sue Walters shares with us her thoughts on this year's event –

"Many thanks to everyone for making the 2018 Scarecrow Trail another super, well supported village event.

The standard of entries was incredibly high so the voting was very close. First place (by 2 votes) was *Gulliver's Travels* in Rectory Road, closely followed by *Rapunzel* in Lower Chapel Lane, and (by one vote) in 3rd place was *Peter Rabbit* on Beesmoor Road.

I find it so fantastic that so many walk around the trail, and it's so great to see families out and about during half term.



This year I have had no reports of vandalism to the scarecrows and that is more good news.

Many thanks to Jen Dunford and Village Action for their help in publicity and organising the walks.

Thank you to everyone who made donations to Christian Aid. A total of £150 was raised. If

anyone else would like to make a donation please contact me, Sue Walters, 07767487531.

And finally a big thanks to The Parish Council and the staff at The Brockeridge Centre for giving out entry forms and maps and answering questions."



1st – *Gulliver's Travels*

2nd – *Rapunzel*

3rd – *Mr McGregor with Peter Rabbit*



# Ministering Angels: VAD Nurses from Frenchay

Exhibition running now to Wednesday 30 January 2019



Frenchay Village Museum will be commemorating the centenary of World War One with a new temporary exhibition 'Ministering Angels: VAD Nurses from Frenchay', which will be displayed in the temporary exhibition space until 30 January 2019.

This exhibition tells the story of local women who devoted their time to aiding recovering servicemen as VAD nurses at Cleve Hill Hospital. It will also delve into the relationships formed between patients and nurses, as well as how war effected people in the village and what they did to help with the war effort.

There will be many intimate photographs from the period displayed, including portraits of nurses and servicemen and images which capture the interiors of the hospital, day to day activities and the comradery which existed between these people. A nurse's uniform, autograph book and other items which belonged to Frenchay women, who worked as VAD nurses, will be put on display, providing a personal insight into their motivations, lives and the bonds they formed with the soldiers they cared for.

During this period there were also many changes relating to the role of women in society, as they became more active in the workforce and leaders in the war effort at home. This exhibition will explore some of these women as they pursued a new purpose in life and strove to comfort those away fighting by providing gifts and food in the form of parcels. The impact of the home front efforts on the soldiers will be recorded through letters and quotes expressing their gratitude. In addition, we will touch on the psychological turmoil suffered by returning men and the methods utilised by medical staff and nurses in guiding them on their recovery.

As a part of the exhibition there will be a new children's activity in the museum for visiting families.

This exhibition aims to commemorate the lives of the brave men from Frenchay who fought in the war and celebrate those at home who passionately devoted themselves to helping the soldiers who were fighting as well as those who had returned.

## Opening times

Doors open every Wednesday 1-4pm and every Saturday and Sunday 2-5pm. Entrance is free.

For more information visit: [www.frenchaymuseumarchives.co.uk/NewMuseum.htm](http://www.frenchaymuseumarchives.co.uk/NewMuseum.htm) or search 'Frenchay Village Museum' on Facebook or Instagram.



In a relaxed environment, our volunteers will show you how to use a computer (PC, laptop or tablet) for word processing, creating spreadsheets, writing emails and using the internet.

Whether you are a complete beginner or someone who wants to improve their skills, we can help.

We use our own PCs, laptops and tablets but you are welcome to bring your own with you and our volunteer helpers will be happy to help with any questions which you may have resulting from use of your own computer or tablet. With one helper for every 2 students, you will learn through practical exercises with someone always on hand to help if you need it.

The Computer Group meets at the Bockeridge Centre in Frampton Cotterell on Monday to Thursday mornings. Each session lasts for 2 hours and costs just £2.50.

You can attend as many sessions as you like as our courses are designed so that each person can proceed at their own pace. You can join the Computer Group at any time as soon as there is space available on the day you would like to attend.

If you would like to book a place, please contact: Jill Allan on: 01454 864442.



## Frampton Cotterell Computer Group

[www.fccomputergroup.uk](http://www.fccomputergroup.uk)

If you would like to learn how to use your computer or brush up on old skills, we are here to help you with one to one and group sessions. We meet at The Bockeridge Centre, Woodend Road Frampton Cotterell.

**Mon - Thurs 9.30am - 11.30am**  
**for each 2 hour session the cost is £2.50**

If you would like to join us please call Jill on:  
**01454 864442**

## FELTHAMS FIRES & FLUES LTD

132 GLOUCESTER ROAD  
PATCHWAY  
BRISTOL  
BS34 5BP

Website: [www.firesandflues.com](http://www.firesandflues.com)  
Email: [felthamsfiresandflues@hotmail.co.uk](mailto:felthamsfiresandflues@hotmail.co.uk)  
Facebook: Felthams Fires and Flues  
TEL: 0117 9093300



**Feltham & Sons is a family business**  
**trading locally since 1989.**

We sell stoves, spares for stoves, (both wood-burning stoves and multi-fuel stoves), and a full range of flue pipe. We also give stove related advice and after-sales support for new and regular customers.

We offer a complete package from builder's works, installation, supplier installers, multi-fuel wood burning stoves.

Why not pop in and see us in our show room  
132 Gloucester Road, Patchway?



**Federation of Small Businesses**  
The UK's Leading Business Organisation





Exclusive to Nuffield Health

# Get a FREE Health MOT

Nuffield Health, Stoke Gifford are opening up their doors and offering their exclusive Health MOT service to everyone until 2019!

Get your results explained by an expert within the hour!

12 Point Health check-up includes:

- Blood Pressure
- Blood Sugar
- Cholesterol
- BMI
- Aerobic Fitness



To book a free visit + Health MOT check please call the club on 0117 974 9740 or email alex.pascoe3@nuffieldhealth.com

Club located on Hunts Ground Road, Stoke Gifford, BS34 8HN

\*valid for 1 visit per person until 31 December 2018. Members receive a Health MOT every 3 months as part of the membership package.

## Back on Track, thanks to Dr of Osteomyology

**Dawn Clode** Ostm, Lic MET Lic CR FAO

As an editor of *Matters Magazines*, I have been visiting Dawn to keep me pain-free for the last 6 years. I originally saw Dawn to assist with lower back pain, tight shoulders and repetitive strain in my arm, all largely caused through too many hours sat at the laptop, often working into the early hours. Every couple of months or so (typically after meeting a deadline), I would visit Dawn for a session to keep me on track, and pain free.

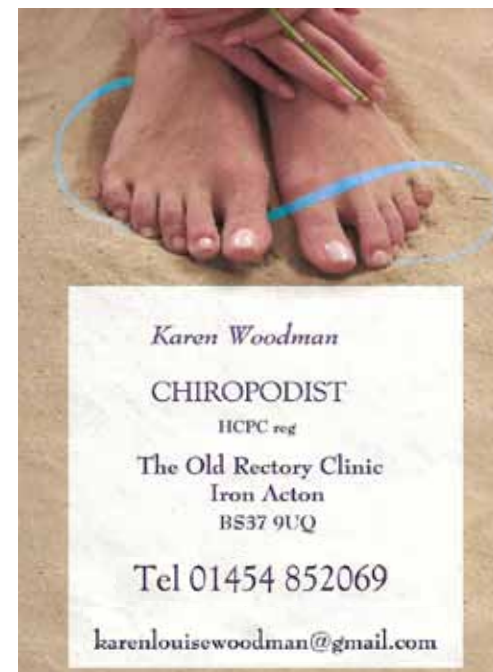
Since first meeting Dawn, I still produce monthly magazines but have since been married and now have two little boys, age 2 and half and 8 months. Gorgeous bundles of fun my boys may be but, as most parents experience I am sure, they have contributed to some extra strain on my body – lots of lifting and carrying of them both at awkward angles, and falling asleep in the early hours with a cricked neck after feeding. This, along with the general impact being pregnant has on your body, has at times left me feeling a bit broken! But always prioritising the boys and work with my time, I ignored my niggling pains.

Well, over the summer, my body came to a stand-still, pain travelling from my lower back into my neck and jaw creating terrible headaches and nausea. The good news is, after putting in a call to Dawn an immediate appointment was made (Dawn understands pain and will always see you as soon as she can). I emerged from the hour session with her (involving some serious massage of various muscles and my back being manipulated back into place where needed) feeling instant relief from the pressure in my head, and a day after the session I felt like a new woman all over.

I write this to urge mums, dads and everyone who is working too hard or who never put themselves first, to make some time for your well-being. You are much better at what you do when you are pain-free. If you live with pain long enough you forget what it is like not have it, I have certainly learnt my lesson and will be back to more regular visits with Dawn, I need to stay strong for my family, job – oh and me!

Take action today, visit [www.life-and-soul-empowerment.co.uk](http://www.life-and-soul-empowerment.co.uk) for full details, or call Dawn on **0795 1099 491** to book in to her locally based treatment room.

Dawn outside her peaceful treatment room



## Clinical Hypnotherapist

**Catherine Smart DHP MNCH CHBP**

Hypnotherapy can help you:

- Stop smoking
- Stop panic attacks
- Lose weight
- Improve your self-esteem
- Combat Fears and Phobias
- Easibirthing practitioner for labour and fertility
- Stress and anxiety



**Easibirthing**  
PARTNERING NATURE

Based in Winterbourne

Hypnotherapy is widely used for all psychosomatic disorders (mental and emotional states which actually produce physical symptoms). In a nutshell, hypnotherapy can generally help with any problem you're finding hard to handle on your own - thoughts and actions you'd like to banish or acquire, or emotional suffering that is too overwhelming or has gone on too long.

Call me on: **07964 991689**

**E Catherine@hypnotherapistbristol.com**

**[www.hypnotherapistbristol.com](http://www.hypnotherapistbristol.com)**



## Severn Counties Foreign & British Bird Society



SCFBBS is a club for people interested in keeping all kinds of cage and aviary birds, from

canaries to finches to parrots. We meet on the third Thursday of each month at Winterbourne Methodist Church Hall at 8pm, where we usually have a guest speaker or demonstration on a wide variety of topics, from keeping various types of birds to photographic tours of various wildlife hotspots. For example, this year we have had speakers from the British Dragonfly Society, a talk on the birds and butterflies of the Pyrenees, the wild flowers of Patagonia, Western Australian birds, the Gambia, and the Falkland Islands, before our annual Christmas meeting.

As well as our club meetings, we have a very active social events calendar, this year we have had a club trip to the *International Centre for Birds of Prey* at Newent, which was very interesting, and later this year we will have a club trip to *Slimbridge* for an early morning safari.



If you visited several shows in this part of the world you may have seen our stand, as we bring our birds out to meet the public. We start the year with a two day stand at the Royal Bath & West show (pictured above), and follow this with stands at the Frenchay Show, Portishead Flower show and Hawkesbury Upton. If any readers would like a member to come and give a talk to their club, or even have a small display at a school fete, please contact us and we will see if we can oblige.

Finally, each year we have two bird shows at Winterbourne Methodist Church Hall.

So, if you keep birds, would like to know what is involved in keeping birds, or just want to get out of the house one evening a month, please come along and you can be sure of a warm welcome!

[www.foreign-britishbirds.info/index.html](http://www.foreign-britishbirds.info/index.html)  
Contact: [severncounties@btinternet.com](mailto:severncounties@btinternet.com)



## U3A PHOTOGRAPHY GROUP

Do you have a camera but wish you could get some better photos? At the U3A Photography Group (Yate and Sodbury District) we welcome all levels of experience – all you need to join is a camera (or even a mobile phone!) and a desire to learn more about how to improve the photographs you are taking! To see some of the photos group members have taken why not have a quick look at our web site [www.u3aphoto.blog](http://www.u3aphoto.blog)?

The web site includes photos from our monthly projects over the last year and will give you a good idea about the range of images our members have taken. Each month we have a new theme and members are encouraged to add their photos to the website. At our meetings we discuss the images with a focus on constructive advice. Group meetings also usually include a presentation on an aspect of photography – for example in September we looked at composition – how to frame your images to get the best visual result. In the coming months we'll be working more on understanding what makes a good picture to help us better able to comment on each other's photographs.

**Join Us!** if you would like to improve your photographs why not come along to one of our meetings or come and see us at the **October 19 Open Day, 2pm at Chipping Sodbury Town Hall?** We welcome new members from a wide area around Yate and Sodbury, and indeed our group committee already includes members from Winterbourne/Frampton area. If you are interested but can't make the Open Day, please contact our group leader, Mary Avenin on 01179 099471 or email via the message link on our website at [www.u3aphoto.blog/contact-us](http://www.u3aphoto.blog/contact-us).

**The Yate and Sodbury District U3A Photography group meet on the first Thursday of every month (except July and August), 2pm at the St John's Church Centre, Wickwar Rd, Chipping Sodbury, BS37 6BQ. Each session is two hours long.**

[www.u3aphoto.blog](http://www.u3aphoto.blog)

## December Events at Winterbourne Library



### Opening Times

### STAFFED TIMES

Tuesday: 10am–5pm  
Wednesday: 10am–5pm  
Friday: 10am–5pm  
Saturday: 9.30am–12.30pm



### OPEN ACCESS (Unstaffed)

8.30am–7.30pm – Everyday

If you register your card for our new Open Access system, and attend an induction, you'll be able to access library facilities throughout the week. You can borrow and return books and use the computers. Speak to a member of staff for more details.

**Rhymetime:** Rhymes and songs for parents and babies/toddlers to enjoy together. Every Tuesday morning 10.30–11.00am.

**Pre School Storytime:** Join us for stories and a simple craft. Every Wednesday morning 10.30–11.00am.

**New! Code4Kids Scratch:** Fun interactive coding club for primary age children. Every Tuesday 3.30–4.45pm.

**Lego Club:** Listen to stories and poems, then create a model to display at the library. Suitable for the primary age range, children must be accompanied by an adult. We'll be meeting on **15 December, 10.30–11.30am.**

**'Loving My Books'** New Book Club for Teens Y7+. Meeting on **19 December, 3 – 4pm**, then third Wednesday every month.

**The Craft Group:** is meeting on **8 and 22 December, 10.00am–12 noon.** New members will

always be made welcome by this friendly group. Share tips and ideas for your knitting, sewing or crochet projects.

**Christmas Silver Singalong! Friday 14 December, 2–3pm.** Come and join us singing carols followed by refreshments and a mince pie. To book your place speak to a member of staff.



**Christmas Rhymetime, Carols & Coffee Morning:** With Winterbourne Churches, **Saturday 22 December, from 10.30am.**

**Just Chillin' - Holiday Drop in: Friday 28 December, 10.30–11.30am.** Suitable for ages 4–10.

For more information on any of the above:  
**T: 01454 868006**  
**E: [winterbourne.library@southglos.gov.uk](mailto:winterbourne.library@southglos.gov.uk)**  
**Visit: [www.southglos.gov.uk/libraries](http://www.southglos.gov.uk/libraries)**

**Twitter: @southgloslibs**

**'Like' us on Facebook: South Gloucestershire Libraries** for all the latest news and for the Mischief Makers updates.

**OSCARS** is a well established playscheme providing before and after school club and holiday childcare for primary school aged children.



Holiday Childcare  
Throughout the year.

Open from 7.45 until 6pm

Breakfast served until 8.15am

Book Full, Half or a School day.

See our website for full details  
[www.oscarschildcare.org.uk](http://www.oscarschildcare.org.uk)

The Terrapin Frampton Cotterell CofE School  
Rectory Road Frampton Cotterell

E-mail: [oscars.terrapin@btconnect.com](mailto:oscars.terrapin@btconnect.com)

**Telephone: 01454 250528**

Registered Charity No: 1133716



**Fromeside Gymnastics Club**

★ Pre School classes for walking age up to 4 years – mornings and early afternoons Monday to Friday.  
★ Recreational classes for school age children, 4 – 17 years – weekday evenings and Saturday morning.  
★ Men and Women's competitive artistic gymnastic squads.  
★ Over 50s fitness group, 10–11am ★ School holiday programmes

For full timetables please check [www.fromesidegym.co.uk](http://www.fromesidegym.co.uk)  
Contact us – T: 01454 776873 E: [office@fromesidegym.co.uk](mailto:office@fromesidegym.co.uk)  
Watleys End Road, Winterbourne, BS36 1PW



# Frampton Cotterell & Coalpit Heath Village Diary

## December 2018

**Sat 1 – Table Top Sale**, Coalpit Heath Village Hall, 1–3pm. Bookings £5. T: 07920 145352.

**Sat 1 – Barn Dance with Mad Hatters Band**, WADCA, 8pm. Caller tells you the steps if you want to dance. All ages/experience. Bring your Mad Hat to enter competition! Tickets £5 before 17 Nov, then £7.50 – [www.ticketsource.co.uk](http://www.ticketsource.co.uk) / Tel: 01454 776268.

**Sun 2 – Hives & Herbal Family Craft Workshop**, Winterbourne Medieval Barn, 11am–1pm. For parents and children to make festive gifts. £13.16 incl online booking fee. Email: [hivesandherbals@gmail.com](mailto:hivesandherbals@gmail.com) / [www.facebook.com/hivesandherbals](http://www.facebook.com/hivesandherbals).

**Mon 3 – Gardening & Social Club**, Manor Hall 2–3.30pm. All welcome. £2.50.

**Tues 4 – The Big Sing**, Saviours Church, 7pm. Community event with local and school choirs and community 'scratch' choir. Free entry. Collection for Christian Aid.

**Wed 5 – Coalpit Heath WI**, St Saviours Church Hall, 7.45pm. Visitors always welcome! Tel: 07935 071291 / [caitlin.reeves@virginmedia.com](mailto:caitlin.reeves@virginmedia.com)

**Wed 5 – South Glos Mines Research Group talk**, The Miners, 7.30pm. Tel: 01454 883607.

**Fri 7 – Quiz**, Crossbow, 8pm. £1.50 ppn. Tel: 01454 772947 / [crossbowhouse@gmail.com](mailto:crossbowhouse@gmail.com)

**Sat 8 & Sun 9 – Christmas Tree Festival**, St Peters Church.

**Sat 8 – Brass Band concert**, St Peters Church, 7.30pm.

**Mon 10 – Crossbow Singers Christmas Concert**, Crossbow House, School Road, Frampton Cotterell, 7.30pm. Tickets £6.00, can be purchased from Rose Tel: 01454 772675.

**Tues 11 – Community Coffee Morning**, WADCA, 10.30am–12.30pm. All welcome.

**Tues 11 – Mothers Union**, St Saviours Hall, 2.15pm. A variety of speakers. Tel: 01454 777664.

**Tues 11 – Crossbow Singers Christmas Concert**, 7.30pm. Crossbow Singers Christmas Concert, Crossbow House, School Road, Frampton Cotterell, 7.30pm. Tickets £6.00, can be purchased from Mary Tel: 01454 887885.

**Wed 12 – Village Walks**, meet 10.30am St Peter's Church. Stroll fields or lanes by river as far as you wish up to 2 miles, or Rural walk River Frome 3.5 miles. All welcome.

**Wed 12 – Carer's Club**, Zion, 2–4pm. Carers welcome to stay with the person they care for or use the free time as they wish. More details from Jean 01454 775786 or Rona 01454 886925.

**Wed 12 – Community Singalong**, Crossbow, 2–3.30pm. £3 includes tea and cakes. Tel: Hilary Jay 07515 351813 / [hilary.coach@icloud.com](mailto:hilary.coach@icloud.com)

**Fri 14 – Bingo**, Crossbow, 8pm. £1 for 5 games and 50p for snowball. Tel: 01454 772947.

**Sat 15 – Weekend Litter Walk**, 10am.

**Sat 15 & Sun 16 – Carols in the Barn**, Winterbourne Medieval Barn, 3.30pm. Drama, carols, mulled wine & mince pies, all for £2 (child £1). Booking essential. T: 01454 774479.

**Sat 15 – Country music evening with Billy Curtis**, Iron Acton Parish Hall, from 7pm. £6. Dancers and listeners welcome. Soft drinks and snacks on sale, but BYOB. More Info from [www.laughterinline.org](http://www.laughterinline.org)

**Wed 19 – Local History Society**, Zion 7.30pm. £4 for non-members incl refreshments.

**Sat 22 – Christmas Party**, The Miners, 8pm. See [www.cphvh.co.uk](http://www.cphvh.co.uk) or Facebook.

**Mon 31 – New Years Eve Party**, WADCA, 8pm. Buffet by Kell's Kitchen. Music from Red Baron Roadshow. £25. Pre-booking essential T: 01454 0776268 / [ca.winterbourne@gmail.com](mailto:ca.winterbourne@gmail.com)

**Mon 31 – New Years Eve Family Party**, The Miners 8pm–1am. Tickets £3. BYO nibbles. See [www.cphvh.co.uk](http://www.cphvh.co.uk) or facebook for details.

## 2019 Dates

**Fri 25 Jan – 3 course meal with music from Tony Graham**, WADCA 8pm. £20. Booking essential, T: 01454 776268 / [www.wadca.co.uk](http://www.wadca.co.uk)

**Fri 1 Feb – Elton John Tribute Act**, WADCA 8.30pm. Early bird tickets £8, after 1st Dec £10 from [www.ticketsource.co.uk](http://www.ticketsource.co.uk) or [ca.winterbourne@gmail.com](mailto:ca.winterbourne@gmail.com) or T: 01454 776268.

**Sat 2 March – Apple Grafting Workshop**, Winterbourne Medieval Barn, 10am–4pm. £45. Pre-Booking required. Tel: 0117 957 4921 / [www.winterbournebarn.org.uk](http://www.winterbournebarn.org.uk)

**Sat 2 March – Ceilidh**, WADCA, 8pm. Varied styles from 'Mad Hatters Band'. Caller tells you the steps if you want to dance. All ages/experience. £7.50 [www.ticketsource.co.uk](http://www.ticketsource.co.uk) or 01454 776268 or [ca.winterbourne@gmail.com](mailto:ca.winterbourne@gmail.com).

**Fri 8 March – Magical Mystery Four, Beatles / Rolling Stones tribute band**, WADCA, 8.30pm. Tickets £8 now from [www.ticketsource.co.uk](http://www.ticketsource.co.uk) or [ca.winterbourne@gmail.com](mailto:ca.winterbourne@gmail.com) or Tel: 01454 776268. Tickets on the door £10.

**Fri 10 May – Buddy Holly tribute**, WADCA, 8.30pm. T: 01454 776268 / [ca.winterbourne@gmail.com](mailto:ca.winterbourne@gmail.com)

**View events online – [www.villageaction.org.uk](http://www.villageaction.org.uk)**



## Big Christmas Sing

**This year's Big Christmas Sing in support of Christian Aid, will take place on Tuesday 4 December, at St Saviour's Church, Coalpit Heath, 7pm.** Local adult and school choirs will be taking part, as well as 'The For One Night Only Community Choir' put together especially for this event. Entry is free with a retiring collection for Christian Aid.

The Churches Together in Frampton Cotterell & Coalpit Heath, held their first Big Christmas Sing for Christian Aid in 2009. Over the years the concert has got bigger, they've packed out venues, raised around £8,000 for Christian Aid and had lots of fun! The concert is a great start to the festive season, organisers hope to see you there.

For further information please contact Zion Church Office 01454 776618).



## St Saviours Church, Coalpit Heath Church Events



### Butterflies Babes and Toddlers Group

You are welcome to bring along

• your little ones to our friendly group Mondays, 10–11.30am (term-time only), £3 per family. Lots of toys, dressing up, book area, sit and ride a music time and more. Get to know other new mums, dads and grandparents. Refreshments included for grown ups and a drink and snack for children. Just come along or e mail [butterflies@gmail.com](mailto:butterflies@gmail.com)



**Parish Praise, 10am** – On the first Sunday of the month. For all ages and families. Do stay for tea, coffee and biscuits afterwards if you wish. Come and meet other families, we would love to see you.



**Messy Church for Christingle, 4pm** – Sunday 27 December. Taking place in the church hall. Bring your children along and meet new friends.

**Christingle Service in the Church, 6pm** – Sunday 27 December.

**Mothers Union** – Meet on the second Tuesday of the month in the church hall at 2pm. Mothers Union do lots of good things to find out more visit – [themothersunion.org](http://themothersunion.org) or contact Mary Head 01454 887870.

**Friday Lunches** – Every week in the church. Anyone is welcome from 11.15am onwards for tea or coffee then stay for lunch at midday. Come and meet new friends. Donations to church funds.



**Seniors fitness, friendship club** – Meet each Wednesday morning, 10–11.30am in the church hall. The club is targeted at senior citizens of all abilities, looking to engage in friendship, fitness and physical activities. We aim to improve your strength, balance, posture and flexibility, in a fun and friendly environment. We also have team games and refreshments. There is no age limit, it's for all. Come along and give it a try. Contact Spencer 07825155954 or Ann Carter 01454 319699.

See the church website for times of other Services and more information. [www.coalpitheath.org.uk](http://www.coalpitheath.org.uk)



## 1st Call

- Lock Opening
- Garage Security Locks
- High Security Padlocks
- Digital Locks
- On Site Key Cutting
- Locks for uPVC Doors & Windows



www.keymasterbristol.com

Based in  
Frampton  
Cotterell



Local Mobile Locksmith

MLA Approved Locksmith Company Providing Fast, Personal Service at competitive Rates



Major Credit Cards Accepted  
**Carl Jenkins** MMLA MBLI  
Qualified Engineer



**0117 957 0011**  
E: info@keymasterbristol.com



**M. E. S**



**Millard Electrical Services**

- Additional lighting & Power • Showers.
- Kitchen Upgrades • Fuseboard Replacements
- Outdoor power • Complete rewires • Fault finding
- Testing • Landlord certificates

Please contact Tom for a free quotation on:

Tel: 01454 603687 Mobile: 07828 555925

Email: tmillard-mes@hotmail.co.uk

## MEDWAY DESIGNS Sewing & Alterations

- Bridal Wear • Alterations
- Evening Wear • Day Wear
- Soft Furnishings & re-upholstery

Ask about sewing lessons

Delivery & Collection Service Available

**Lois Coulson**

**0117 969 1798 /**

**07950 396064**

loiscoulson@ymail.com

14 Watch Elm Close  
Bradley Stoke

Call now for a friendly personal service

**D-CR DOMESTIC APPLIANCES** Proud member of: **WTA**  
DOMESTIC APPLIANCE SALES AND REPAIRS

- WASHING MACHINE
- FRIDGE FREEZER
- TUMBLE DRYER
- COOKER
- DISHWASHER
- HOB OR HOOD

Tel 01454 850522 or 07917441539  
EMAIL: d-cr@live.co.uk  
www.d-crdomesticappliances.co.uk



- New & Re-conditioned Stairlifts & Warranty
- Removals & Relocations
- Free Surveys & Quotes – No Obligation
- Rentals for Straight Stairs
- Independent, Professional & Friendly Advice
- Over 24 years practical experience



Independent Stairlift Specialist

**01454 413 748 • 07833 318 722**

www.thornburystairlifts.co.uk

**FASCIA lift**

- PVCu Fascia Boards
- GUTTERING
- SOFFITS
- CLADDING

**01454 269011**  
**07813 006950**  
matt@fasciabristol.co.uk  
www.fasciabristol.co.uk

## A.1. AERIALS

- Digital TV Aerials
- Sky Digital / Freesat / FreeviewPlay
- Repairs
- Extra TV Points
- Phone now for Free Quotation **Freeview**

**07956 491495 / 01454 318873**

www.a1aerialsbristol.co.uk

## TAYLOR CARR PAINTING & DECORATING SERVICES

PROFESSIONAL PAINTING AND DECORATING

ALL ASPECTS OF DOMESTIC WORK  
UNDERTAKEN



**07713691232**

TCARRPAINTING@YAHOO.COM

**clover ovenclean**

Clover Ovenclean will clean your oven, range, hob, extractor or Aga using a non-caustic, fume free, eco-friendly system

Call Heath on 07943 870400  
www.cloverovenclean.co.uk

**Professional Oven Cleaning Services**

**BEAUFORT**  
PROPERTY MAINTENANCE

**FREE QUOTATION**  
No Obligation

- PAINTING & DECORATING
- HOME IMPROVEMENT
- BUILDING MAINTENANCE & REPAIRS

Call for your free quotation:  
**01454 777 887 or 07980 301 905**

From a single tile to a whole roof, all build and roof works undertaken, pitched and flat.

**ROOF-TECH**  
Bristol

We have over 20 years experience are fully insured and all work is guaranteed.

For a FREE, no obligation quote and roof survey, just give us a call.

Office: **01275 540952** Mobiles: **Ben Peters: 07724 681620** or **Steve Coles: 07724 639830**  
E-mail: roof-tech@hotmail.com



**BuildAssure**  
Building with precision

**A E Rollin & Sons Ltd.**

Family run Builders & Roofing Contractors, Established 1959  
Extensions : Renovations : Conversions : Refurbishments  
Brick & Stone work : Carpentry : Roofing : Patios & Paving : Fascias & Soffits  
49, Nicholls Lane, Winterbourne, Bristol. Tel 01454 773684  
email : aerollinandsons@hotmail.co.uk

**QUARRY GARDENS LTD**

John Harris  
30 Quarry Barton  
Hambrook  
Bristol. BS16 1SG

**STONE MASONS ~ LANDSCAPING  
GENERAL BUILDERS**

Tel: 01454 772 502 Mob: 07919912966

**PRICE ELECTRICAL SERVICES**

Domestic and Commercial Electrical Contractors

- New Builds • Extensions • Rewires
- Consumer unit upgrades
- Kitchen/bathroom upgrades • Inspection & Testing

07788 55 33 04  
info@priceelectrical.co.uk

**JB Glass & Glazing**

- Glass Cut While You Wait
- UPVC - Repair Work on Misted Units  
Windows / Locks / Mechanisms and Hinges
- Replacement - PVCu Windows & Composite  
Doors, 10 year guarantee on parts and labour
- Mirror Showroom - Mirrors cut to size

**A K PLUMBING**

Dripping tap? Burst pipe? Toilet won't flush?  
From full bathroom suites to outside taps  
and everything in between  
We carry out all plumbing maintenance and repairs

24-Hour Emergency call out Give us a call:  
0774 775 0136 01454 600375  
www.akplumb.co.uk

Covering Winterbourne, Frampton and surrounds

• Glass Splashbacks any shape, colour or size

FENSA REGISTERED

Tel: 0117 9693778 / 9793980  
Email: sales@jbgglazing.net  
www.jbgglazing.co.uk

10% OFF with this advert  
quote WMJB upon enquiry  
T&C apply see in store for details

367 Filton Avenue Horfield, Bristol BS7 0BD

**The Curtain Company**  
*Made to measure Curtains and Blinds*

Free Estimates  
Free Expert Advice  
Wide Range of Fabrics  
Poles and Tracks  
including Bay Windows  
Fitting and Hanging Service  
All Types of Blinds

01454 327597  
07540 612604  
www.thecurtaincompany.co.uk

**TS Technisys SECURITY**

Home alarm systems

- Installation of wireless & wired alarms
- Repairs & Servicing
- New bell boxes, detectors and door contacts
- CCTV and Intercoms

0117 9075709 - 07938 861504  
www.technisys.co.uk - info@technisys.co.uk  
Based in Stoke Gifford

**Do you need a Handyman?**

Something needs Clearing, fixing, Making,  
Painting, Cleaning .....

Call Martin for a quote or chat about  
what needs to be done.

Based in Frampton Cotterell  
Call  
Mob - 0758 529 2350  
Home - 01454 776422

Emergency number: 07798 905 337  
Keep it in your mobile

**Lock Stuck and Barrels**  
*The complete door and window service*

Locked out?  
Need to replace or  
change your locks?

- Swift LOW cost emergency  
service to all home/commercial  
lock outs.
- Non destructive methods gaining entry quickly and  
efficiently from the initial call.
- Keys or handbag stolen? Burgled! Need your locks  
changed or re keying on a new home, call us.

ALSO: LOW cost Repair / replacement of UPVC /  
ALUMINIUM WINDOW and DOOR: LOCKS, HINGES,  
HANDLES AND MISTED UP / BROKEN DOWN  
DOUBLE GLAZED UNITS.

Full explanation and costs given before any works carried  
out. All work fully guaranteed. No call out fee

Call Dave on 07798 905 337  
www.thebristollocksmith.co.uk  
Based in Frampton Cotterell

**C.J.P Landscaping**

**Tree Maintenance**

NCH Arboriculture  
Qualified Bricklayer  
Full Public Liability Insurance  
Micro Digger and  
Chipper Facility

- Hedge Trimming • Tree Work • Stump Grinding
- Drives, Patios & Decking • Fencing
- Raised Sleeper Beds

All types of Landscaping and  
Drainage undertaken

Contact us: 07879 845 051 / 01454 528 744  
parsons.com@hotmail.com  
Find us on Facebook for our full portfolio



**Avanti Cars**  
Serving Winterbourne, Frampton, Coalpit Heath & locality



- 4 & 6 seater vehicles
- Evenings out
- Local & long distance
- Lady driver available
- Airport & seaport transfers
- Friendly reliable service
- Weddings/special occasions
- Credit & Debit Cards

Tel: 0117 931 1473 Mobile: 07973 705522  
www.avanticars.org.uk

**Liza and Sharon Domestic Cleaning Services**



- Weekly & Fortnightly Cleans
- Spring Cleans
- Fully Insured Operatives

Tel: 01454 777 248  
Mob: 07971 013 914

**BonneFreshClean**  
Carpet & Upholstery Cleaning Specialists



Professional carpet, upholstery and leather cleaning carried out with care by an all-female team

For a free no obligation quotation call Karen on  
01454 436001 or 07774 908410  
www.bonnefreshclean.co.uk  
44 Townsend Lane, Almondsbury, Bristol, BS32 4EQ

**GAS HEATING AND PLUMBING PROBLEMS**



Resolved inexpensively by friendly local Gas Safe engineer  
All work fully guaranteed - No VAT - No callout charge  
Landlords Certificates - Boiler Replacements - Servicing  
All makes and models - Cookers - Fires - Weekends / Evenings

**Peter Ryecroft 01454 250530 / 07968 281317**  
Visit Owl's Website at www.atpitch.com

**Frampton Garage**  
(SOUTH GLOS LTD)



MOT's only  
£34.95

Like us on Facebook for special offers

- MOT's • Servicing • Repairs • Clutches
- Brakes • Diagnostics • Electrical Repairs
- Air Conditioning • MOT & Interim Service from \* £99 \*(T&C apply)

Tel: 01454 777841 01454 777607  
M: 07879 477713  
www.framptongarage.com

Open Mon-Fri 8am - 6pm Sat 8am - 1pm  
Family based business  
76, Woodend Road, Frampton Cotterell

**GARY SMART ELECTRICAL**  
Domestic, Commercial and Industrial Installations

All electrical work undertaken ...

- Rewiring • lighting • bathroom showers • kitchens • garden and garages etc
- Safety inspections, Periodic Testing, Fault finding and Repairs

Fully qualified City & Guilds  
Electrician 17th Edition Part P Registered  
07805 070 947 • 0117 987 1437 • garysmart@sky.com  
All backed with a 6 year Niceic insurance policy



**FRAMPTON TAXIS**

ALL UK AIRPORTS. PORTS & STATIONS COVERED  
4, 5 & 6 SEATERS AVAILABLE  
Lady driver available on request. 

For a Friendly Prompt Service call or E-Mail:  
07960 067767 - 01454 279517  
E: framptontaxis@tiscali.co.uk  
www.framptontaxis.co.uk



**P.M. Autos**

Unit 2 kendleshire Farm, Down Road, Winterbourne Down Bristol BS36 1AU

- Car & Van servicing & repairs
- Tyres
- Brakes
- Exhausts
- Air Conditioning
- Clutch & Cam Belt Replacement
- MOT
- Repairs
- Welding

Telephone: 01454 775757 Mobile: 07831 33 11 57

**LOW COST PLUMBING**



- Taps, Washers ✓
- Toilets, Cisterns ✓
- Leaks, Blockages ✓
- Tanks, Overflows ✓
- Lead Pipes, Stopcocks...etc... ✓

OAP DISCOUNTS and NO VAT  
0117 957 5092

**W.J.M Plumbing & Tiling**

OAP DISCOUNT FULLY QUALIFIED  
Ciphe Member

24 hour call out - No Job Too Small  
Bathrooms ~ Kitchens  
Unblocking Drains ~ Leaks Repaired

Reliable, Affordable  
Friendly Service.

TEL: 01454 851830  
MOB: 07902 383219



Based in Coalpit Heath

**ACE TAXIS**

Covering Winterbourne, Frampton Cotterell, Coalpit Heath & surrounds

SHORT & LONG JOURNEYS  
STATION & AIRPORT BOOKINGS

ALL MAJOR DEBIT & CREDIT CARDS ACCEPTED

**TEL: 01454 626 837**



**Garage Doors**

Installation | Maintenance | Repairs  
Your local independent garage door specialists

Up & Over Doors | Sectional Doors | Roller Doors



VARIETY OF STYLES TO SUIT YOUR REQUIREMENTS



Call Brunel doors for your free no obligation quotation  
**BRUNEL DOORS**  
01454 882212

Visit our website: www.bruneldoors.co.uk







**COVERALL ROOFING**

Rubber Flat Roofing  
Pitch Roofing • Sun Tiles  
u.P.V.C. Cladding & Guttering  
Velux Windows • Lead Work  
All Remedial Work

**ALL WORK  
GUARANTEED**

**TEL: 01454 250148  
MOBILE: 07831 616184**  
[www.coverallroofing.co.uk](http://www.coverallroofing.co.uk)



**GLOBE HEATING**  
**0117 369 0072**  
Chris: 07944 975 492 /  
Shane: 07944 975 445

[@GlobeHeatingLtd](https://www.facebook.com/GlobeHeatingLtd) 

**BAXI ATAG**  Proud members of  
Approved installer  Where reputation matters

## South Gloss Decorating

Painters & Decorators

Interior and Exterior

Affordable, Reliable, Professional

Dave Beauchamp

0117 956 9932

07739 382 524

[www.southgloss.co.uk](http://www.southgloss.co.uk)

[www.facebook.com/southgloss](https://www.facebook.com/southgloss)



## CWG DESIGN & BUILD LTD

- A comprehensive building service  
from design to completion -

Local reputable building contractors with over 30 years'  
experience - references available upon request

New builds with NHBC warranty, extensions, loft  
conversions, annexes, renovations and lots more



Tel: 07980 858249, 01454 501104,  
[cwgdesignandbuild@gmail.com](mailto:cwgdesignandbuild@gmail.com)

## J A Property Services

Kitchens

Bathrooms

Tiling

Interior & Exterior Decorating

General Maintenance

**0117 431 5132 /  
07973 905323**

email: [japroperty01@gmail.com](mailto:japroperty01@gmail.com)



**HOME CARE  
Plumbing &  
Heating Ltd**

- For all your plumbing needs
- Free quotes
- Family run
- Local business
- Boiler repair specialists
- Up to 10 years guarantee on Worcester boilers

**01454 414438 / 01173 035179**  
[www.homecare-plumbing.co.uk](http://www.homecare-plumbing.co.uk)  
Established over 17 years



**MD Aerials**  
Call Michael Dagger

**T: 01454 418 341 M: 07817 304 236**

All types of aerial and satellite work undertaken including:

- Digital aerial installations
- Reception problems
- Additional room feeds
- TV wall mounting
- Setting up & tuning
- Free quotations

   
[mike@mdaerials.co.uk](mailto:mike@mdaerials.co.uk) [www.mdaerials.co.uk](http://www.mdaerials.co.uk)





**Elite** *Based in Winterbourne*  
HYGIENE SERVICES [elite-hygiene.com](http://elite-hygiene.com)

For all your Domestic & Commercial Cleaning Needs  
Deep Cleaning & Daily Clean Specialist  
Full insured, Uniformed Staff

- ▣ Kitchens ▣ Washrooms & Toilet Descaling
- ▣ Carpets ▣ Upholstery ▣ Fire & Flood Damage
- ▣ Patio & Gutter Cleaning ▣ Painting & Decorating
- ▣ Emergency drain cleaning service

**Tel: 01454 777826 / Mob: 07850 873067**

## Inspired Bathrooms

Design & Installation

- Bathrooms
- Wetrooms
- Tiling
- General Plumbing
- Workmanship guaranteed
- Portfolio and references available on request

Call us on

01173 307 537 or 07853 069 280

[www.inspiredbathrooms.net](http://www.inspiredbathrooms.net)

[inspiredbathrooms@hotmail.co.uk](mailto:inspiredbathrooms@hotmail.co.uk)

Inspired by you, designed & installed by us



**THE AERIAL MAN**  
TV Aerial and Satellite Specialist  
*Affordable Prices - Reliable Service*

- Digital Aerials
- Sky Work
- Poor Reception Problems
- Humax Recorders
- Fully Guaranteed
- Free Quotes
- Additional TV Points
- Repairs
- OAP Discounts
- TV Sales

 **01454 660 046**  
 **07818 413 451**  
[www.theaerialman.co.uk](http://www.theaerialman.co.uk)





**'All Angles Covered'**  
**Plastering Services**  
All aspects of plastering work undertaken

**Neil Gaynor**  
**Tel: 01454 613441**  
**Mobile: 07779 588541**

E: [neilgaynor@allanglescovered.co.uk](mailto:neilgaynor@allanglescovered.co.uk)  
*Reliable, competitive and professional*



# Index of Local Advertisers

<b>Aerials</b>		<b>Counselling</b>		<b>Opticians</b>	
A1 Aerials	39	Anthony Maxom Counsellor	6	Mike Harbord Opticians	28
Dan Grace Aerials	19,45	<b>Foster Care Services</b>		Spec Savers	7
M D Aerials	44	Capstone Fostering	8	<b>Painter / Decorator / Tiler</b>	
<b>Accountants &amp; Tax Services</b>		Foster with South Gloucestershire Council	13	South Gloss decorator	45
Hards Tax Services	16	<b>Dog Grooming</b>		Taylor Carr Painting & Decorating	39
<b>Bathrooms / Fitting</b>		Bubbles dogwash	10	<b>Plasterer</b>	
Inspired Bathrooms	45	<b>Electrician</b>		All Angles	45
<b>Bicycle Repair</b>		Gary Smart	42	<b>Plumbing / Heating engineers</b>	
Rule 4 Cycles	20	Millard Electrical services	38	AK Plumbing	40
<b>Blinds/Curtains</b>		Price Electrical	40	Globe Heating	44
Harmony Blinds of Bristol	47	<b>Electrical Appliance Repairs</b>		Gregor Heating	1
The Curtain Company	41	DC-R domestic appliance repairs	38	Home Care Plumbing	44
<b>Builders / Groundwork/Property svcs</b>		<b>Estate Agents / Property Letting</b>		Low Cost Plumbing	43
A E Rollin Builder	40	Bundy and Bond Estate Agents	1,3	Peter Ryecroft Plumbing/Heating	42
Beaufort Property Maintenance	39	<b>Fire &amp; Stoves Installation/Sale</b>		WJM Plumbing/Tiling	43
CWG Design & Build Limited	45	Felthams Fires & Flues Ltd	31	<b>Racecourse</b>	
<b>Butchers</b>		<b>Footcare</b>		Chepstow Racecourse	4
Molesworth	12	Chiropodist – Karen Woodman	33	<b>Recruitment</b>	
<b>Cakes / cooking</b>		<b>Gardens / Garden Maintenance</b>		Northstar Care Management – Support Buddy Required	28
Medway Designs	38	CJP	41	<b>Roofing</b>	
<b>Carpet &amp; Upholstery Cleaners</b>		Colour Fence	2	Coverall Roofing	44
Bonne Fresh Clean	42	Quarry Garden	40	Rooftech	39
<b>Car / Motorbike- Repair / Valet / MOT</b>		<b>Glazing</b>		<b>Security</b>	
Frampton Garage	42	J B Glass and Glazing	40	Technisys - Home Alarm Systems	41
P M Autos	43	<b>Hair / Beauty / Massage</b>		<b>Schooling / Tuition / Courses</b>	
<b>Catering – Event / Festival / Wedding</b>		Beauty Plus	21	Oscars pre school/Holiday club	35
Vintage Box	19	Lisa hairstylist – Mobile Hairdresser	21	Winterbourne Academy	23
<b>Charities</b>		<b>Handyman Services</b>		<b>Sewing Alterations</b>	
Ategi	22	J A Property Services	45	Medway Designs	38
<b>Child Activities / Care</b>		Martin Tutton	41	<b>Slimming Clubs</b>	
Fromeside Gym Club	35	<b>Health Clubs</b>		Slimming World	20
Oscars pre school/Holiday club	35	Nuffield Health	32	<b>Shopping Centres</b>	
Puddleducks	5	Spirit Health Club (Holiday Inn)	18	Willow Brook Centre	10,11
<b>Cleaning &amp; Domestic Services</b>		<b>Home Improvements</b>		<b>Social/Community &amp; Clubs</b>	
Clover Ovenclean	39	Colour Fence	2	Fromeside Gym Club	35
Elite Hygiene Services	44	Fascialift	39	<b>Stairlifts</b>	
Liza & Sharon Domestic Cleaner	42	Southern Plasticad	48	Thornbury stairlifts	38
<b>Complementary / Holistic Therapies</b>		<b>Hotel / Conference / Weddings</b>		<b>Swimming – Lessons / Pool</b>	
Anthony Maxom Counsellor	6	Holiday Inn	18	Puddleducks	5
Catherine Smart Hypnotherapy	33	<b>Insurance</b>		<b>Taxi Service</b>	
Just You Holistics	21	Ashley Rodwell Insurance	17	Ace Taxi	43
Osteomyologist – Dawn Clode	33	Education Broker	9	Avanti Cars	42
<b>Computer services: IT – Repair/help</b>		<b>Kitchen Refurbishment</b>		Frampton Taxis	43
Frampton Cotterell Computer group	31	Dream Doors	7	<b>Windows/Conservatories &amp; Doors</b>	
<b>Community Event</b>		<b>Locksmith</b>		Brunel Garage doors sales/repair	43
Winterbourne Academy		Keymaster	38	Southern Plasticad	48
Senior citizens free Christmas Celebration	23	Lock Stuck and Barrels	41		

EDITOR'S NOTE: Winterbourne and Frampton Matters is independently published and delivered FREE to every home (c 7,000+) in Winterbourne, Frampton, Coalpitheath, Winterbourne Down and Moored. The views and opinions expressed are not necessarily those of the editors (unless it is a personal review of a service that we have participated in). We cannot vouch for every advertiser personally (although since starting in April 2009 we have used many of the services ourselves). Any feedback or experience is welcomed. We would like to thank all the advertisers who support this publication and therefore make it possible. Please return their support by utilising their services when and where you can. It is the advertiser's responsibility to ensure conformity with the Trade Descriptions Act 1975, Business, Advertisements Disclosure Order 1977, Sex Discriminations Act 1975 and the Consumer Credit Act 1974. We cannot be held responsible for misrepresentations in the adverts included. All artwork created by Matters Magazines must not be published in any other media without our permission. © Matters Magazines 2015 © Winterbourne & Frampton Matters 2018.

If your group, organisation or business would benefit from appearing in this magazine please call Jaci on 01454 300 900.



Visit us at  
BS34 5PA  
Unit 10 Smiths Ct, Patchway  
BS32 8EF  
Willow Brook Ctr, Bradley Stoke

- ✓ Buy DIRECT from the manufacturer
- ✓ We measure, make and fit ALL types of blinds
- ✓ Shutters in just 4 WEEKS
- ✓ 5 Year no quibble guarantee



01454 616848  
0117 9314141  
07970 803137

[www.harmonyblindsofbristol.co.uk](http://www.harmonyblindsofbristol.co.uk)

**SPECIAL OFFER**  
**Buy 2 Blinds and**  
**get a 3rd one**  
**FREE**

# Southern Plasticlad Ltd.

## WINDOWS, FASCIAS, CONSERVATORIES AND ROOFS

Conservatories to your  
Individual tastes and budget  
Georgian · Victorian · Lean-to  
OR

ALL NEW **GUARDIAN** warm roof system



**Guardian**  
Warm Roof

**Flat Roof Problems?**

**RUBBERBOND**  
FLEECEBACK  
EPDM



After



Before

We specialise in  
all types of roofing  
including pitched  
roofing.

We can offer a  
number of different  
styles of roof  
tile or simply  
replace the  
existing tiles



Double glazed windows and Doors  
upto A+9 Rated  
Contemporary or Traditional  
Choice of colours · Range of Styles

At last a proven permanent solution  
with RubberBond EPDM  
Proven to last over 50 years

PVCu Solid · Replacement Fascias  
Soil Stacks and Cladding  
Guttering · Soffits  
Choice Of Colours · Range of Styles

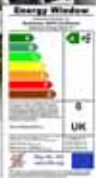
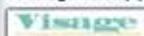


**FENSA**

Registered Company 30873



Composite Doors  
Available in a variety of colours  
and Designs  
Giving the appearance of a solid door



VISIT US TODAY FOR A GREAT BARGAIN!

[sales@southernplasticlad.co.uk](mailto:sales@southernplasticlad.co.uk)  
[www.southernplasticlad.co.uk](http://www.southernplasticlad.co.uk)

SHOWROOM OPEN  
MON-FRI 9am-5pm SAT 9am-12pm

Unit 4 Ram Hill Business Park  
Ram Hill, Coalpit Heath BS36 2TX

Freephone 0800 542 6066

Telephone 01454 777 732