

Your one truly LOCAL  
Community Magazine,  
delivered FREE  
to every home



Keep Me  
I'm useful

# Winterbourne & Frampton

*including Coalpit Heath & Winterbourne Down*

## Matters

March 2016



Beatrix invites you to support  
Baby Hip Health Week  
7 - 11 March 2016



**aj homes**

Your Local Agent for  
Sales, Lettings & Management

**01454 252 140**  
email: [info@aj-homes.co.uk](mailto:info@aj-homes.co.uk)  
[www.aj-homes.co.uk](http://www.aj-homes.co.uk)

*A Business Based On -*  
**TRUST, HONESTY & PROFESSIONALISM**

## MacKendrick Norcott

*It's all about the service*

**SALES 01454 772468      LETTINGS 01454 851111**

[www.mackendrick-norcott.co.uk](http://www.mackendrick-norcott.co.uk)

Your LOCAL directory of services, businesses and community events



## Dementia Residential and Nursing Care for the Elderly in Winterbourne, Bristol

We have been Caring for the elderly in Winterbourne since 1992

We believe that by caring for everyone as an individual we can improve their **quality of life**

**Memory Lane**, our **1950's village street**, provides the perfect opportunity for the people who live with us to reminisce and stimulate their memories as well as enjoying a pleasant environment.

**"Caring for the individual is at the heart of what we do"**

Blossom Fields



Memory Lane



The Grove



Tel: 0117 330 1400

Web: [www.grovecare.com](http://www.grovecare.com)

Email: [contact@grovecare.com](mailto:contact@grovecare.com)

## Dear Residents,



We head into Spring this month and look forward to the associated celebrations. Don't forget the special ladies in your life on Mothering Sunday, 6 March. Easter is not far behind, we are pleased to bring you a full list of services you will be welcome to attend. Plans are also well underway with Winterbourne Down's Village Carnival, it promises to be bigger and better than ever, if you would like to get involved the committee would be delighted to hear from you.

One local family share their touching story on their baby daughter's experience of Hip Dysplasia and invite you to support Baby Hip Health Week 7 - 11 March 2016.

I am pleased to report on the success members of Paul's Place Boccia team had a recent competition, with many of the participants amongst the medals.

Winterbourne Musical Theatre celebrates 40 Years this year, I hope you enjoy reading about its interesting history and news of the latest production.

There are several more interesting reports and updates from local groups and societies throughout the publication so grab a cuppa and enjoy the read!

Take care until next time,

**Wendy x**



Please get in touch, we love to hear from you.

[community@mattersmagazines.co.uk](mailto:community@mattersmagazines.co.uk) 01454 300900

# Free varifocal lenses

with glasses from £69



**Bradley Stoke**  
The Willow Brook Centre  
Tel 01454 275 020



Cannot be used with other offers. £69-£149 ranges: include 1.5 PENTAX Standard varifocal lenses. £169 Fineform and Rimless ranges: include 1.6 PENTAX Standard varifocal lenses. All lenses are scratch-resistant. Extra Options available at an additional charge. Subject to suitability. SKU 25664270. ©2016 Specsavers. All rights reserved.





### First free bikes given to South Gloucestershire school pupils through recycling scheme

Pupils at Elm Park Primary School in Winterbourne are the first to receive free bicycles through a new scheme called Bikeability Recycled. The recycled bikes were presented to three pupils at Elm Park Primary School in Winterbourne in January by South Gloucestershire Council's road safety team. The bikes are gifted to pupils without access to one of their own, to enable them to take part in Bikeability cycle training.

The road safety team have been collecting used and unwanted bikes from local schools and with the support of SUEZ, the council's waste and recycling contractor, from Sort It recycling centres. Qualified

bike mechanics within the council's cycle training team then refurbish and make the bikes roadworthy, before they are redistributed through schools to people in the community without access to one. By providing families with better access to bikes, it is hoped more children will take part in Bikeability training and make cycling part of their life.

Planning, Transport and Strategic Environment Chair Cllr Colin Hunt said: "All schools in South Gloucestershire are offered free Bikeability cycle training by us through their school, however sometimes we are not able to provide this service to all children because they do not have their own bike. By refurbishing and redistributing these bikes to local school pupils we are hoping that more people take part in our cycle training. We have seen a huge increase in cycling in South Gloucestershire and it is important that young people are taught to cycle safely and with consideration for other road users."

One of the pupils receiving a free bike, Connie Starkie, aged 7, said: "I really love my new bike! I did have a smaller one before but that one had stabilizers on it. One of the Bikeability instructors gave me some tips for my new bike and will be coming back to teach me how to ride it without using stabilizers."

Bikeability courses improve students' on-road riding abilities, and aim to make them more road aware. To get their Bikeability award, students are instructed on how to ride their bikes to the government-approved National Standard for Cycle Training, which sets out the training and skills essential for making cycling trips on roads. Courses are available during school time and also during the school holidays.

More schools in South Gloucestershire are invited to get involved either by donating used bikes or by helping to identify families who could benefit from this project.

**Please email:** [cycle.training@southglos.gov.uk](mailto:cycle.training@southglos.gov.uk) or find out more about the work of the road safety team by visiting [www.southglos.gov.uk/roadsafety](http://www.southglos.gov.uk/roadsafety).



### Specialist Bicycle Build, Servicing & Repair

"It's all about the bike..."

From Mountain bike to Racers ~ Kids bikes to Commuters we will come to your home or place of work and keep your bike in peak condition.

- Servicing • Repairs • Bike Build
- Collection/Return • Mobile Service

**Tel: 01454 838144 ~ 07870 574349**

[www.rule4cycles.co.uk](http://www.rule4cycles.co.uk) ~ rule4cycles

## Baby Hip Health Week 7 - 11 March 2016

### A local family's story

This month we were pleased to be contacted by a Frampton Cotterell family with a request to help raise awareness of the organisation STEPS – a national charity supporting children and adults affected by a lower limb condition such as clubfoot or a hip condition. This is a charity particularly close to their heart after calling on their support when their youngest daughter was just a few weeks old.

Mum Mady explained to me it was during her baby Beatriz's eight week check that the doctor suspected she may have Hip Dysplasia, a scan confirmed this. At ten weeks young Beatriz was put into a harness, the family were told she would have to wear this for sometime between two months to two years and surgery may be necessary.

Recalling the events Mady told me it was an extremely traumatic time both emotionally and on a practical level. The brace that pins the legs into a frog like position could not be removed at all, so there was no bathing, no swimming and clothes had to be adapted to fit dear Beatriz. It was at this frightening time that the family discovered STEPS. The charity's website filled with practical information was a life saver, the family were also able to read about several success stories on the site and were given hope. "They made the condition seem ok and we could see there was light at the end of the tunnel" said Mady.

Amazingly at twenty weeks Beatriz was able to be released from her harness. The physio the family saw, told them in twenty five years she had never

seen such a bad case. So it is remarkable what a great recovery she made in that time. Beatriz was signed off with the consultant at twenty months and has never looked back.

Now four years old, she is extremely active and loves swimming and gymnastics.

When I spoke with Mady, Beatriz was tearing around in the garden with little sister Lorena. It was expected that Lorena would be born with the same condition but thankfully this was not the case.

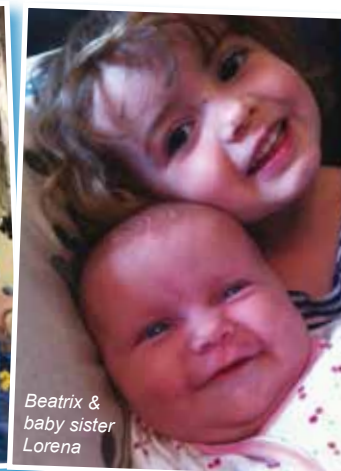
The local family would like to encourage people to support STEPS in anyway that they can, perhaps by hosting a 'Put the Kettle on' coffee morning at home or work to spread the word about baby hip health and help raise vital funds at the same time. Alternatively you can make a donation via the **website – [www.steps-charity.org.uk](http://www.steps-charity.org.uk) where you will also find lots of helpful advice. Alternatively you can contact the STEPS Helpline on 01925 750271 or email [info@steps-charity.org.uk](mailto:info@steps-charity.org.uk).**



Baby Beatriz being brave in her harness



Beatriz enjoying gymnastics



Beatriz & baby sister Lorena



A happy family!



REASONS TO  
#LOVEtheKENDLESHIRE

# #5: Two homemade main course lunch specials for £12

Available weekdays from 12pm

The Kendleshire, Coalpit Heath  
0117 956 7007

KENDLESHIRE.COM



Based at The Greenfield Centre in Winterbourne  
we are a long established centre providing a  
range of services for local families.

#### Pre-School sessions:

Pre-school sessions from 2 years:

- Weekly Forest school sessions
- Highly qualified staff.
- Grant funding for 2,3 & 4 yr olds
- Strong links with local schools

#### Other services:

Baby Group, Parent Led Toddler Group and Stay  
and Play sessions

For more information or to arrange a visit please  
call Helen on **01454 773781** or see the website  
[www.stmichaelspreschool.net](http://www.stmichaelspreschool.net)

E: [enquire@stmichaelspreschool.net](mailto:enquire@stmichaelspreschool.net)

The Greenfield Centre, Park Avenue, Winterbourne.

## News from Winterbourne Down WI Report

Our President, Dawn Mahoney, welcomed everyone to the meeting and after the business and reports had taken place we were transported back to our childhood by listening to Tim Lewis and Sheila Furneaux as they recounted and sang their version of the Wind in the Willows.

Tim at first gave us a history of the author, Kenneth Grahame, who was born in Edinburgh on 8 March 1859. His father married Betty Ingles in 1855 and they had four children who used to enjoy listening to bed time stories told by their father about being in the countryside and by the river.

At the age of five Kenneth lost his mother to childbirth and his father took to drink, so the children went to live with their grandparents in Cookham Dean in the village of Cookham in Berkshire.

Kenneth was an excellent scholar at St Edwards School in Oxford but did not go to University as his grandfather wanted him to go directly into Banking. This he found to be rather dull so he started writing articles in papers and periodicals. He married Elspeth Thomson in 1899 and they had a son Alistair who was born blind in one eye and who had health problems. Kenneth enjoyed reading stories to his son and hence wrote his masterpiece *The Wind*

in *The Willows*. Alistair went to University, but got depressed and committed suicide. His father became a recluse after his sons death. He spent time in Italy and Cornwall and died 6 July 1932 at the age of 73. He is buried in Holywell Cemetery, Oxford.

Tim and Sheila told us the story in verse and song about the Wind in The Willows. It was very entertaining with familiar music from different recognisable songs which related to the rhyme, telling us the story of toad, mole, ratty and badger. Very clever, amusing and most entertaining.

**Our next meeting is on 3 March and our Speaker will be Martyn Poole talking about the Soup Run and the Homeless. On 7 April the talk is on The Really Expensive Chocolate Company given by Nicola Eaton. All are welcome to join us at 7.30pm in All Saints Church Hall, so see you there.**



## Why wouldn't you want CCTV? ALL ANGLES CCTV Wireless Intruder Alarms

- ✓ CCTV is more affordable than ever
- ✓ CCTV is better quality than ever
- ✓ CCTV has become a necessity
- ✓ You can now view your CCTV from anywhere in the world using your mobile phone
- ✓ CCTV is a deterrent

Out of hours installation available to avoid any disruption to your business



Call today to book a free site survey **07929 274 679**

- No wires & No mess • Simple to operate • Pet tolerant • 6 years battery life
- Up to 64 wireless sensors • Protect outbuildings with no cabling
- Anti jam technology • Minimal disruption • Minimal installation time
- Calls or texts you in an alarm • Add extra sensors anytime
- Easily transferable to a new home if you were to move



Visit our website [www.allanglescctv.com](http://www.allanglescctv.com)

at Redland High

Visiting Morning:  
Friday 11 March  
9.30 – 11.30am

CONTACT SARAH PATCH, ADMISSIONS  
SECRETARY, FOR MORE INFORMATION

**Redland High School for Girls**  
JUNIOR SENIOR SIXTH FORM

Redland Court, Bristol BS6 7EF  
0117 290 2908 | [admissions@redlandhigh.com](mailto:admissions@redlandhigh.com)  
[www.redlandhigh.com](http://www.redlandhigh.com)



## News from Coalpit Heath WI

**OSCARS** is a well established playscheme providing before and after school club and holiday childcare for primary school aged children.



Holiday Childcare  
Throughout the year.

Open from 7.45 until 6pm

Breakfast served until 8.15am

Book Full, Half or a School day.

See our website for full details

[www.oscarschildcare.org.uk](http://www.oscarschildcare.org.uk)

The Terrapin Frampton Cotterell CoE School  
Rectory Road Frampton Cotterell

Email: [oscars.terrapin1@virgin.net](mailto:oscars.terrapin1@virgin.net)

**Telephone: 01454 250528**

\*terms and conditions apply Registered Charity No: 1133716

Coalpit Heath WI had their first meeting of the New Year on Wednesday 6 January. We were delighted to welcome Mel from Melanie's Kitchen, in Downend. Armed with a food mixer, she showed us how to create some lovely desserts, all very simple but we all agreed very tasty. The lemon cheesecake was a particular favourite.

After receiving a bye for the first round of the skittles tournament, Coalpit Heath faced Chipping Sodbury in the second round of the WI skittles competition. The match was played at Shire Community Centre, Yate on 22 January. Unfortunately, Chipping Sodbury arrived with a player short, which meant that the lowest score on their team was counted twice. The final score line saw a win for Coalpit Heath at 118 points and Chipping Sodbury 86 points, with Leigh Smith being our top scorer with a total of 25 points. Coalpit Heath will now progress to the 3rd round.

At the meeting some of the ladies expressed an interest in learning new craft skills so we kicked this off on Tuesday 26 January with a crotchet and knitting night at St Saviours Church Hall. Eighteen ladies made a brave attempt but some of us are going to need decidedly more practice!

We are aiming at an additional meeting a month where we can draw on the varied craft skills of members.

At the February meeting we welcomed the aptly named 'funky farmer', Richard Cornock, who gave us an entertaining and fascinating insight into a 'Year in the Life of a Farm'

Richard's family has owned New House Farm in Tytherington since the early 1900s. Richard now runs it along with his brother and Dad.

He took us through the different stages of the land through the year. Showing us photos he has taken at the different stages. He finished the talk with an amusing video of skipping cows being released into the field after spending the winter in the barns.

His work carried out through the Higher Level Stewardship scheme was of great interest.



Particularly the project involving replanting an orchard and inviting families to help with the planting.

The members enjoyed the talk so much we are hoping to arrange a tour of the farm this summer.

We are looking forward to our March meeting when Liz Ranger will be visiting from the West of England MS centre.

*Our meetings are held at St Saviours Church Hall, Coalpit Heath on the first Wednesday of every month – start time 7.45 pm, new members are welcome.*

# live happy!

with  
Slimming World



### Monday

#### Frampton Cottrell

Watermore Primary School  
5.30pm & 7.30pm  
Tel: Alison  
07972 376055

### Tuesday

#### Winterbourne

The Greenfield Centre  
Park Avenue  
9.30am, 5.30 & 7.30pm  
Tel: Frankie  
07519 347243

### Wednesday

#### Frampton Cottrell

Frampton Cottrell C of E  
Primary School, 7.30pm  
Tel: Lisa  
07815 759118

[slimmingworld.co.uk](http://slimmingworld.co.uk) 0344 897 8000

Facebook Page: Frampton Cottrell and Winterbourne Slimming World

*Slimming*  
WORLD  
touching hearts, changing lives

**MOTHER'S DAY TREAT**

**BEAUTY PLUS**  
*By Myriam*

**Mother's Day**

Treat Mum to a relaxing facial and she will receive a **FREE 15 minutes of massage!**

Call to book your appointment today and avoid disappointment.

**01454 776938 / 078546 08889**  
147 CHURCH ROAD FRAMPTON COTTERELL, BS36 2JX

**Shampers Salon**  
has a vacancy for an experienced

**Hair Stylist**

*Are you used to running a busy clientel?*

*Do you enjoy giving good customer service and retailing good quality products?*

*We are offering the right person the opportunity to join a small friendly team in a busy and established local salon.*

If this interests you, please email your CV and any questions you may have to:  
[shampers1987@gmail.com](mailto:shampers1987@gmail.com)

**Have you tried our new Nail Bar yet?**

Shampers Hair Salon,  
8 Ratcliffe Drive,  
Stoke Gifford.  
**01179 799 154**

**\*10% off Gellux manicure in March\* with this advert**



### The Manor Hall at Coalpit Heath

Registered Charity Number 1093035.  
Henfield Road, Coalpit Heath, BS36 2TG



Do you want a local venue for a private party, wedding reception or christening?

Or a room suitable for meeting or conference?

Perhaps you would like to start a class or club?

**New for 2016. Westerleigh Parish residents receive a £3.00 per hour discount!**

The Manor Hall has all the character of a Victorian building, but with all the modern facilities you need. Self-catering and bring your own alcohol allowed. This lovely Grade 2 Listed building also has a beautiful Community garden and ample car parking.

Photographs available on our website:

**www.manorhall.org**

**Please contact the Hall Manager on 07873747513 to arrange a viewing or for further details.**

## MEDWAY DESIGNS for Cakes & Sewing

Wedding Cakes	Bridal Wear
Anniversaries	Alterations
Birthdays	Evening Wear
Christmas Cakes	Day Wear
Special Occasions	Soft Furnishings & re-upholstery

*Delivery & Collection Service Available*

**Lois Coulson**  
**0117 969 1798**

**lois.coulson@medway-designs.com**

**14 Watch Elm Close**  
**Bradley Stoke**

**Call now for a friendly personal service**

## Fired Up Netball Club

Winterbourne Matters was delighted to find out more about a relatively new social netball club training twice a week in Winterbourne.

Fired Up Netball Club started just over a year ago with the aim of providing a friendly and sociable way for ladies to get back to playing netball, meet new friends and get fit at the same time. The group usually plays on the outdoor courts at Fromside Community Centre, next door to the gymnastics club on a Tuesday evening (7 – 8pm) and also on Saturday mornings (9.30 – 10.30am). However the Tuesday session has currently moved to the Jubilee Centre in Bradley Stoke to take advantage of the floodlights - it will be back in Winterbourne from the beginning of April.

Understanding that everyone has lots of work and life commitments, the club goes the extra mile to make it as flexible as possible. Some ladies are able to train regularly whilst others only train when they can, and this is completely fine. A regular weekly commitment is not expected but obviously it is lovely to see ladies returning week on week and really enjoying having fun whilst having a workout! Fired Up Netball play friendlies with local teams and have also taken part in a few Back to Netball tournaments. There are also regular social events.

You don't need to have any previous experience of playing netball as all the rules are explained. Most of the current group hadn't played since school (which for some was a very long time ago!) The club is open to ladies over 30 of any level of fitness and ability. They have just run some Back to Netball sessions through Avon Netball and have welcomed more new players back to the court, which is great. Hopefully some of our readers will be encouraged to go along and try out your netball skills (good or bad!).

**If you would like any more information please contact Catherine Neck on 07773 658446 or email [Catherine.neck@btinternet.com](mailto:Catherine.neck@btinternet.com).**



**Richard Bawn**  
**Men's mobile hairdresser**

**07773 468 324**

**Hair cuts in the comfort of your own home, care home, hospital.**

**AURA**  
hair nails & beauty

**01454 887553**  
68 Bradley Avenue, Winterbourne, BS36 1HS  
www.aurahairandbeautyrooms.co.uk  
info@aurahairandbeautyrooms.co.uk

## Hards Tax Services

**Chartered Tax Advisers and Chartered Accountants**

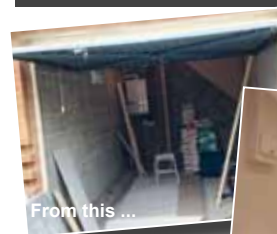
- Self assessment tax returns
- Small business accounts
- Payroll and VAT
- Tax planning advice, including property taxes

*For a free no-obligation appointment, contact Adrian Hards on: 01454 777218 or 07971 133730 email: [adrian@hardstaxservices.co.uk](mailto:adrian@hardstaxservices.co.uk)*

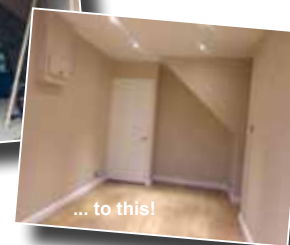


**Is your conservatory too cold in winter and too hot in summer?**

*Have you thought about turning it into a sunroom and creating a space you can use all year round?*



From this ...



... to this!

**Need extra living space?**

*Have you thought about converting your garage to create a study / playroom / family room?*



**10%<sup>your</sup> OFF** **BRISTOL SUNROOMS**  
OFFER ENDS MAY 2016

Please contact **01454 851510 / 07951 786548** to discuss how Bristol Sunrooms can help! **[www.bristolsunrooms.com](http://www.bristolsunrooms.com)**





## News from Crossbow Singers

Crossbow Singers are now well into rehearsals for their Summer Concert, under the temporary leadership of Carolyn Dutton, ably assisted by Liam Grogan and accompanied on the piano by Mary Darby. Our regular Musical Director, Rachel Gittoes, is currently on maternity leave and we all wish her well. At the time of writing, Rachel is still awaiting her new arrival, but, by the time this article goes to press, all that may have changed! Good Luck, Rachel, we send you our love.

The music for our Summer Concert has been chosen by our newly appointed Music Committee. They have decided upon the theme 'Great Music for Great Britain', choosing music written by British composers from various ages and genres – hopefully something there to suit all tastes. Our **Summer Concert will take place on Monday and Tuesday, 4th and 5th July, so put it in your diary now and look out for our posters around our area nearer the time.** All profits from the Summer Concert will be shared between two charities nominated by members of the choir. We rehearse and perform in Crossbow House, School Road, Frampton Cotterell.

Before the concert, however, Crossbow Singers will be holding their AGM, when the items under discussion will range from business matters such as appointing officers, to what refreshments to have at the concerts and whether we should change our dress code! The important matter of the charities to be supported this year will also be decided. The AGM will be held at 7.30 pm on Monday, 11th April in Crossbow House.

### Would you like to join us?

As always, and sadly in common with many mixed choirs, we are in need of more tenors and basses. **We are a friendly group who meet each Monday evening during term time, starting at 7.30 and finishing around 9.00 pm.** Although helpful, it is not necessary to be able to read music – all 4 parts are practiced thoroughly. However, a love of singing is essential! So, if you sing tenor or bass and have Monday evenings free, why not come along and give us a try? We look forward to welcoming you.

A rather belated Happy New Year to all our supporters.

*Chris Palmer, Choir Secretary*



FLORAL  
FRIENDS  
OF FRAMPTON

## An update from – Floral Friends of Frampton

### TOP SOIL

Thanks are due to local builders Draisey and Company, who are restoring a house in Church Road and kindly donated about 4 tons of good quality topsoil (with some bulbs growing in it) for us to top up the hollows in the Woodend/Beesmoor strip - amazingly daffodils are already beginning to flower here! Spare topsoil has been bagged up in preparation for the proposed raised vegetable planters at the planned future Sensory Garden at the Bickeridge Centre.



### COMMUNITY ORCHARD

A group of school children from Watermore School, assisted by volunteers from Village Action and Floral Friends, planted some Frampton Magnum Plum Trees in the community orchard. Once common in the village, this heritage variety still exists in people's gardens and in forgotten corners of the village. Graham White, "Mr Fruit" identified some existing trees and has grown some saplings which have now been planted for all to enjoy in a few years time.

### SPRING FAIR – A DATE FOR YOUR DIARY

**Floral Friends will be holding a Spring Fair on St George's Day – Saturday April 23rd 2016 – at the Bickeridge Centre (10.30 am. – 2 pm.).**

Plants and homemade cakes will be on sale, refreshments will be available. Donations of plants would be much appreciated (email [floralfriendsofframpton@gmail.com](mailto:floralfriendsofframpton@gmail.com)). All proceeds will be used to continue our work with plants and flowers around the village, making it a better place to live.

Do you have an hour to spare? If so, why not join us in helping to make the village a better place to live – full details are on our webpage <http://fframpton.wix.com/frampton-cotterell>.

REASONS TO  
#LOVetheKENDLESHIRE

#9:  
**The Party Package  
for 50 guests for  
just £1000**

**Includes disco and finger buffet**

The Kendleshire, Coalpit Heath  
0117 956 7007

[KENDLESHIRE.COM](http://KENDLESHIRE.COM)

Fiona Blair  
Language Services

Tuition in German and French  
Individually or in groups

Translation from German and French

Proofreading and document checking

In English

**Phone: 01454 880458**

**Mobile: 07968 291882**

**E-mail: [fionablair@tesco.net](mailto:fionablair@tesco.net)**

## BARTLETT TREE EXPERTS



**A Very Brown Hedge Indeed...  
We Can Help Restore It.**

**A Complete and Comprehensive Tree  
Care Service since 1907**



For over 100 years, Bartlett Tree Experts has led both the science and services that make your landscape thrive. No matter the size or scope of your needs, our arborists

bring a rare mix of groundbreaking research, global resources and a local service approach to every task at hand.

**Tree & Shrub Pruning | Planting | Tree Removal  
Tree Stock Surveys | Woodland Management  
Health & Safety Reports | Disease & Insect Control**



[www.bartlett.com](http://www.bartlett.com)

**For your Free Consultation  
Please Contact: 01275 371000  
E-mail: [bristol@bartlettuk.com](mailto:bristol@bartlettuk.com)**



## Community Noticeboard

For free listings contact  
community@  
mattersmagazines.co.uk

Hi, We are a young couple looking for our first house in this area. We have a good deposit and a mortgage in place; if you are looking to sell your house now or in the very near future please consider contacting us directly, to cut out the 'middle man fees'. This is a genuine search we are in rented locally and don't have to give any notice as it is a relatives house, so no chain and no hold ups.

Many Thanks Sian and Tom

Sian – 07974 740054  
Tom – 07583 577636

## New Deliverers Wanted!

Would you like to assist in delivering your much loved Winterbourne & Frampton Matters?

Please get in touch with Wendy on 07715 745 854 or community@mattersmagazines.co.uk for more information.

## BULLFISH CRAFT & THERAPY FAYRE

**SAT 12th MARCH**

**10.30 - 3.30**

**TOWN HALL  
CHIPPING SODBURY**

**HANDMADE CRAFTS  
BRANDED GOODS  
THERAPIES**

**REFRESHMENTS  
RAFFLE**

\*\*\*\*\*  
for more information go to:  
www.bullfishcharityfayres.co.uk

## Frampton Cotterell Village Friends

Invite you to join their small friendly over 50's group for coffee/tea and a chat.  
Brokeridge Centre on Woodend Road  
Wed from 11 till 12 noon.  
Visits or lunch out once a month  
Tel; 01454 887953

## Winterbourne Netball Club

Train 7 - 8 pm or 7 - 9 pm every Thursday evening at Winterbourne International Academy.

They have 2 teams who play in the Avon Netball League in Division's 1 & 8.

For more information on joining please contact Becci Calver (beccicalver@hotmail.com)



## Friday Nights

at Crossbow House, School Road.

**1st Friday of every month -  
QUIZ**

**2nd Friday of every month -  
Folk Music Club**

**3rd Friday of every month -  
BINGO**

All starting at 8 pm.  
Everybody welcome!



**TRAIDCRAFT**  
Fighting poverty through trade

## COFFEE MORNING FOR FAIR TRADE

ZION UNITED CHURCH  
Woodend Road  
Frampton Cotterell

10.30am - 12.30pm  
Saturday 5 March 2016

Mothering Sunday gifts  
March Hare-Brained clearance sale  
Spring Fashions  
Traidcraft Easter eggs



## Table Top Sale

**St Peter's Church, Church Road,  
Frampton Cotterell, BS36 2AB**

12th March, 2pm-4pm

Tables £5 - contact Sarah on 07811 916 628 or sarahlparker80@hotmail.com

50p entry

Homemade cakes, tea and coffee for sale



Are you looking for very reasonable rentable hall space?

We have an excellent sized hall that would accommodate a multitude of fitness activities and classes; children's parties; craft events etc and it is available to hire from 5 - 9pm during the week, and all day Saturday and Sunday during term time. In the school holidays it is available every day, all day. If you are interested in finding out more please contact Lynn Ingle on 01454 866750. Elm Park Primary School, Nicholls Lane, Winterbourne, Bristol BS36 1NF.

**Winterbourne Afternoon WI are holding a 50p an item Charity Jumble Sale Saturday 5th March 11-1.00 Parish Hall, Station Road, BS37 4PQ. Clothes, shoes, toys and refreshments. Admission 20p**

## St Saviours event

Friday 4th March, 3:30pm

Children's Afternoon Tea. Big bell ringing, singing, story, craft and tea. No charge (donations).

Everyone welcome.





In a relaxed environment, our volunteers will show you how to use a computer (PC, laptop or tablet) for word processing, creating spreadsheets, writing emails and using the internet.

Whether you are a complete beginner or someone who wants to improve their skills, we can help.

We use our own PCs, laptops and tablets but you are welcome to bring your own with you and our volunteer helpers will be happy to help with any questions which you may have resulting from use of your own computer or tablet. With one helper for every 2 students, you will learn through practical exercises with someone always on hand to help if you need it.

The Computer Group meets at the Bickeridge Centre in Frampton Cotterell on Monday to Thursday mornings. Each session lasts for 2 hours and costs just £2.50.

You can attend as many sessions as you like as our courses are designed so that each person can proceed at their own pace. You can join the Computer Group at any time as soon as there is space available on the day you would like to attend.

If you would like to book a place, please contact: Jill Allan on: 01454 864442.



## Frampton Cotterell Computer Group

[www.fccomputergroup.uk](http://www.fccomputergroup.uk)

If you would like to learn how to use your computer or brush up on old skills, we are here to help you with one to one and group sessions. We meet at The Bickeridge Centre, Woodend Road Frampton Cotterell.

**Mon - Thurs 9.30am - 11.30am**  
**for each 2 hour session the cost is £2.50**

If you would like to join us please call Jill on:  
**01454 864442**



## Susan's Pet Care

[www.susanspetcare.net](http://www.susanspetcare.net)  
M 07706036738  
[susan\\_slades@btinternet.com](mailto:susan_slades@btinternet.com)

Insured & CRB Checked



Trained & Experienced Dog Walker

Pet sitting in your own home inc. dogs, cats and small animals.

Pop-in visits

Dog and Cat grooming inc. clipping, hand stripping, wash and blow dry, ear clearing, ear plucking and nail clipping by a trained groomer either in your own home or at grooming parlour.

Trained in Small animal and Dog First Aid



## BUBBLES DOG WASH

Dog and Cat grooming spa.

- No Cages • Nail Clipping • Ear Cleaning
- Scissoring & Clipping • Hydro-Bath

**Professional Affordable Luxury for your pet**

**Call 01454 856159**

E: [info@bubblesdogwash.com](mailto:info@bubblesdogwash.com)  
[www.bubblesdogwash.com](http://www.bubblesdogwash.com)

unit 2a, Mays Hill Industrial Estate, Frampton Cotterell.



## COMPANIONS HAVEN

PET CREMATORIUM



For when the time comes to say goodbye.....

Companions Haven is a family run pet crematorium, specialising in individual cremation for over 20 years. Set in beautiful grounds between Bristol and Bath in the village of Pucklechurch.

200 Westerleigh Road  
Pucklechurch Bristol BS16 9PY

**Tel: 0117 937 4554**

[www.companionshaven.co.uk](http://www.companionshaven.co.uk)  
[info@companionshaven.co.uk](mailto:info@companionshaven.co.uk)



Winterbourne Matters was pleased to catch up with Claire White from Winterbourne Rabbits (and Guinea Pigs!) for this issue. We learned that rabbits are the UK's 3rd most popular pet and there are more than 60 breeds to choose from (who knew that!)

Claire and her team know all about rabbits, having over 30 years experience in caring for and working with rabbits and guinea pigs. She offers a 5\* holiday boarding service for your pet bunny or guinea, which offers large, clean, airy and spacious facilities, giving you peace of mind to enjoy your time away.

Winterbourne Rabbits operates a non-profit rescue centre for re-homing rabbits and guinea pigs, working very closely with the local vets in connection with re-homing and health checks of the rescued pets. The centre is vet approved and holds a full South Gloucestershire County Council Rescue Licence which allows them to provide a re-homing facility for pets that can no longer be cared for by their owner (for a variety of reasons). Winterbourne Rabbits will not judge anyone who brings in a rabbit or a guinea pig for rehoming - being only concerned about your pets welfare. They will provide a happy caring home for your pet until a suitable loving new home can be found.

However, re-homing is an expensive process, including not just food and board but also vaccinations, neutering (where necessary) and vets' bills. The rescue centre is operated on a very small budget, relying on donations to help contribute towards the expense.

*There are plenty of rescues looking for loving homes, so if you are seeking a new pet rabbit or guinea pig, why not contact Claire - she may well have the perfect pet for you?*

Winterbourne Rabbits will be at the Royal Bath & West Show on 3rd/4th June this year raising awareness of the Rabbit Rescue, along with some rabbits and guinea pigs looking for new loving homes!

Winterbourne Rabbits are dedicated to the welfare of rabbits and guinea pigs and are happy to provide advice and guidance where needed - there is a wealth of information under 'caring for your pet' on their website [www.winterbournerrabbits.co.uk](http://www.winterbournerrabbits.co.uk) that you are welcome to browse and Claire would be pleased to hear from you if you require further information. Telephone 01454 774 965 or 0771 373 2210, you can also find them on facebook 'Winterbourne-Rabbits' and follow them on twitter /WbourneRabbits.



**5\* Holiday Boarding**

## Winterbourne Rabbits

**& Rabbit Rescue**



- Spacious in door hutches/outdoor runs
- All food/vegetables/hay/bedding included
- Grooming/nail clipping service available

**01454 774 965 / 0771 373 2210**  
[www.winterbournerrabbits.co.uk](http://www.winterbournerrabbits.co.uk)



## Whats Going on in 2016 at the Holiday Inn Bristol-Filton



### Valentine's Day - 13th February

Celebrate with someone special this Valentine's day in our Sampans Oriental Restaurant.

From £25.00 per person



### Tribute Nights 2016

Friday 22nd April - Robbie Williams  
Tribute Night - **£32.00 pp**  
Thursday 1st December Ultimate Boybands  
Tribute Night - **£42.95 pp**  
Thursday 8th December - Michael Buble  
Tribute Night - **£42.95 pp**

Price includes 3 course meal, 1/2 bottle of wine per person, tribute act and disco.



### Mother's Day - 6th March

We could never hope to pay our Mums back for everything they've done, but we can try.

Treat your Mum to a 3 course Carvery Lunch.

Only £19.95 per person



### Easter Sunday - 27th March

Celebrate with us this Easter with a sumptuous 3 course Carvery Lunch.

Only £19.95 per person



### Wedding Packages from £999

Wedding Ceremony  
Arrival Drinks Reception  
3 Course Wedding Breakfast  
Evening Sandwich Buffet  
Complimentary Accommodation for Bride and Groom.



### Christmas Book Early & Save

Book now for one of our great Christmas Party Nights and enjoy fantastic value.

Price includes 3 course meal, disco and half bottle of wine per person

30% discount if book by end of January 2016 and 20% discount if book by end of March 2016.

Accommodation from £49.00

## Community Matters: In the community with the Holiday Inn Bristol Filton

Little Stoke Gifford Matters was delighted to be invited in to the Holiday Inn Bristol Filton to meet with Margaret Coffey, Director of Sales for the Hotel. Margaret was keen to impress how much the hotel would like to improve its connections with the local community - their new General Manager, Shaun Wilde, being particularly focused on developing more community partnerships.

Each year the Holiday Inn Bristol Filton chooses a charity to support. Last year they raised in excess of £3,500 for the local Macmillan Cancer Support for the Macmillan Wellbeing Centre based at Southmead Hospital. They held a variety of raffles and cakes sales and also hosted a Family Fun Day and coffee morning which raised over £1,000. Members of staff from across the hotel team also got involved in the fundraising, such as Food and Beverage Assistant Lee Allen who raised £120 from a sponsored body wax! The Conference Ops Team hosted a bag packing session at the local Asda and raised £400, whilst the Housekeeping team raised £230 by making and selling magnets and good luck charms!

Shaun Wilde, General Manager told us: "We're delighted to present to Macmillan the funds our team has raised last year, and look forward to seeing the difference it will make to the support centre at Southmead Hospital. Whilst we enjoyed every minute of our fundraising activities, the real reason for organising and taking part in the events was never far from our minds. Macmillan is a charity close to our hearts and we know what a difference every penny makes."

The chosen charity for this year is the Make A Wish Foundation, although they are also still looking for a local charity to support too. The Holiday Inn Bristol Filton will be hosting its second Family Fete & Fun Day on 25th September this year, from 12-4pm. Margaret is looking for additional local community groups who may wish to join in with the fun day and participate by running a stall or putting on a demonstration on the field. If your community group would like to get involved please contact Margaret directly via email: [margaret.coffey@hibristoltilton.co.uk](mailto:margaret.coffey@hibristoltilton.co.uk).



Photo shows Margaret Coffey, Raphael Herzog, Matthew Stubberfield and Georgina McMenamin





Don't miss our even more exciting

Winterbourne Down Village Carnival Saturday 30 April - Monday 2 May 2016

News from the Carnival committee

As stated in the heading, we are planning to make our carnival even more fun-filled and exciting than last years!

On Saturday, 30th April, we will be hosting an evening of line dancing and Fred and the team will provide a lip-smacking BBQ. The committee are also considering providing a family event such as a children's disco/entertainer which will start at 6.30 pm in All Saints Hall. This will be aimed at those families who have young children and will lead nicely into our line dancing and BBQ evening commencing at 7.30pm. Tickets go quickly for this event, so don't leave it too late to order yours.

On Sunday 1st we are hoping to combine the Treasure Hunt with our Scarecrow Trail - details to follow. Our Sunday evening Songs of Praise will take place in the Methodist Church at 6pm. On Carnival Monday, apart from some new and exciting acts to entertain you throughout the day, we

are once again inviting commercial stalls, as well as the charity stalls, to line the streets/ pathways. Therefore, if you or someone you know has a creative flair and wishes to set up a stall and are willing to pay for a table and make a contribution to our chosen charity, please contact Anthé Evans on 01454 778156.

Our theme for this year will be 'Mystical Creatures'. We will be decorating Down Road as usual and extend an invitation to residents to join in the spirit and display flags etc..

So, in brief, Family Disco/Entertainment, Line Dance and Barbecue at All Saints' Church Hall on Saturday, 30th April. Tickets will be on sale from 1st April - contact Fred Smith 01454 772072 or Sue Cessford 01454 777881. Ticket prices to be confirmed but Line Dance ticket price will include the delicious Barbecue. (Bring your own drinks and plastic glasses).

On Sunday, 1st May - Family Village Treasure Hunt combined with Scarecrow Trail starting at 2.00 p.m. from Winterbourne Down Methodist Church Hall. Refreshments will be on sale in the church hall from 2.30 pm and from 2.45 pm. entertainment will be provided, free of charge, by the Westerly Showband. Everyone is welcome. This will be followed at 6.00 pm by Songs of Praise in the Methodist Church with entertainment provided. The charity for the collection this year will be the Red Cross.

Monday 2nd May is Carnival Day, when there will be a procession from Bradley Avenue shops, leaving at 10.15 am, to the Methodist Church grounds. Please arrive at starting point by 10 am because Fred will be offering a special prize for the best dressed participant in the procession. Judging of age groups will take place at the Methodist Church grounds where great money prizes will be awarded. Remember to turn out your mystical character costumes - Tinkerbelle, Little Mermaid, Shrek and Avatar, are all welcome. Now is the time to start looking!

Craft and Charity stalls will be set up in Down Road and Camp View. If you wish to run your own stall to raise funds for your favourite charity or you would like to rent a table to sell home made produce/crafts and are willing to make a donation to our chosen charity, please contact Anthé Evans on 01454 778156 for further information. Activities are being planned for the



whole day, full details of which will be available in the Carnival Programme on sale from 1st April from committee members. Please come along and enjoy the weekend and don't forget to invite your friends.

**Donations please!** The carnival committee runs its own stall during the carnival day, the proceeds of which go towards the next carnival and to local charities. We are in need of any spare items you may have sitting around (unwanted Christmas presents!). This can include good quality toys, books, household goods, good quality bric-a-brac, etc. Please contact any committee member for more information.

**Can you help?** If you want to be involved in the organisation of our carnival, please come to one of our meetings which take place on either a Monday

or Tuesday from 7.30 pm in the Winterbourne Down Methodist Church hall. Contact a committee member for details.

We will once again be seeking volunteers to help during the carnival day with setting up/manning stalls/manning the road closure areas and tidying up. Please contact Fred to add your name to our 'volunteer list'. All we ask is an hour of your time to help make this carnival day another great success.

For further information please contact either the Chairman on 01454 772072 or myself, Sue Cessford, on 01454 777881 or visit our website [www.wdcarnival.org](http://www.wdcarnival.org) or our Facebook page [www.facebook.com/wdcarnival](http://www.facebook.com/wdcarnival).

## CONCERT

Band of the  
Avon Fire & Rescue Service

Raising money for the ...



Monday, 14<sup>th</sup> March 2016  
7.45 p.m.

Winterbourne Down Methodist Church  
Entrance Ticket: Adults £5.00

Children free, when accompanied by an adult  
Tickets can be purchased from Carnival Committee members or telephone 01454 777881 for information  
Price includes light refreshments

www.Winterbourne  
**COMPUTER**  
Services.co.uk

desktop and  
laptop PC  
help  
& repairs

01454 838 488

[help@winterbournecomputerservices.co.uk](mailto:help@winterbournecomputerservices.co.uk)

fast, friendly and efficient computer support for home & small business users - serving South Gloucestershire and North Bristol - we come to you, no call out fee

 Established since 1998

**Pooh Corner**  
**Pooh Corner Day Nursery**  
Down Road, Winterbourne Down, BS36 1BN  
**Tel: 01454 857 529**  
Open 52 weeks of the year, 7.45 am - 6.00 pm  
Free Nursery spaces for 2, 3 & 4 year olds  
[Places available now!](#)

REASONS TO  
#LOVetheKENDLESHIRE

**#11:**  
**"The Best  
Sunday Lunch  
in the area"**

Mothers' Day 6th March, book now!

The Kendleshire, Coalpit Heath  
0117 956 7007

[KENDLESHIRE.COM](http://KENDLESHIRE.COM)



# Paul's Place compete at Boccia Heathcoat Cup

**On Saturday 23 January, seven of Paul's Place Boccia players took part in the inaugural pan disability individual tournament in Guildford, Surrey.**

For those of you that are not familiar with the game, Boccia is a Paralympic sport for athletes with disabilities that have a major impact on motor skills. It is a target ball sport belonging to the same family as petanque and bowls, a game of strategy in which players demonstrate great skill and determination to overcome their impairments.

This event was the first time that all of their players were officially classified, which means they are now properly registered to take part in any pan disability competition. Players were entered into three of the eight categories – BC2, BC5 and BC8.

In BC2, Matt Badman did amazingly well, winning all four of his games, to win the gold medal! Simon Hill played in the same class and also did brilliantly winning the bronze medal.

In BC5, two of Paul's Place players met in the final, where Mark Rance won the gold, beating Andy Batten. Nick Brake came 4th, narrowly losing out on the bronze on a tie break. What fantastic results!

Luke Jones and Martin Long both played in BC8, but could not quite get amongst the medals. This was somewhat surprising as Luke is probably the best player the team have, but there were mitigating circumstances which might explain this. All the matches were played over two ends, which effectively gives you little or no chance of saving a game, if your opponent has a lucky shot on the jack or indeed a good one.

This competition was also the first time the team have played as individuals, which takes a bit of getting used to, and to give them credit, the opposition were pretty good.

Strangely the players who got the most out of the weekend were the players who did not win a medal. Nick has hardly played for 18 months, due to health issues, and came into the weekend completely undercooked. His performance exceeded all expectations and will do wonders for his confidence.

Luke rarely experiences losses and coped with the disappointment amazingly well. He was gracious in defeat, congratulating his opponents on their victory in a magnanimous way and philosophical afterwards, keeping things in perspective and his emotions under control. Luke responding in this was awesome and in a strange way will do him more good than him getting just another win. We are sure the team will benefit from his mature response to what must have been a very disappointing day.

Martin was always going to struggle a bit playing without teammates, who help with his decision making, but as the day wore on, he got to grips with the different format and ended up in a positive place.

Mark, Andy and Matt have now qualified for the finals later on in the year for this new competition, called the Heathcoat Cup, so watch this space for an update in the next magazine.



Paul's Place players receiving medals from Head referee of Boccia England

## The Curtain Company

Made to Measure Curtains and Blinds

Free Estimates

Free Measuring Service

Free Expert Advice

Wide Range of Fabrics

Curtain Poles and Tracks

Fitting and Hanging Service

• Roman • Venetian • Vertical  
and Roller Blinds

**Tel: 01454 327597**



### Insurance one-stop shop

Age UK South Gloucestershire offers a range of tailor-made products and services including home, car and travel insurance designed with the over 50s in mind.

**For a face-to-face no obligation quote, visit:**

Age UK South Gloucestershire  
67 High Street  
Thornbury  
BS35 2AW  
Monday to Friday 9.00am to 13.00pm  
or call 01454 411707



Home, car and travel insurance are provided by Ageas Insurance Limited.  
Age UK Enterprises Limited is a commercial services arm of Age UK (registered charity number 1128297) and donates its net profits to Age UK. Age UK is a registered trademark of Age UK. The use of the name and logo 'Age UK' is done so under licence agreement between Age UK and Age UK Enterprises Limited. Promoter: Age UK Enterprises Limited, Tavistock House, 1-6 Tavistock Square, London WC1H 9PU. NP282BV/2N2V12, SL117634\_34

## HARBORD OPTICIANS

Welcome to Mike Harbord Opticians - a family practice in Winterbourne Village.

Friendly, personal service and advice.

Full Eye Examinations and Retinal photography.

Qualified Optometrists and Dispensing Opticians.

A wide range of spectacles from NHS to handmade and bespoke frames.

New ranges this Spring include Jimmy Choo and Tag Heuer.

Call today for an appointment

**01454 775530**

3 WHITEGATES, FLAXPITS LANE, WINTERBOURNE, BS32 4HG

## Clinical Hypnotherapist

**Catherine Smart DHP MNCH CHBP**

Hypnotherapy can help you:



- Stop smoking
- Stop panic attacks
- Lose weight
- Improve your self-esteem
- Combat Fears and Phobias
- Easibirthing practitioner for labour and fertility
- Stress and anxiety



Hypnotherapy is widely used for all psychosomatic disorders (mental and emotional states which actually produce physical symptoms). In a nutshell, hypnotherapy can generally help with any problem you're finding hard to handle on your own - thoughts and actions you'd like to banish or acquire, or emotional suffering that is too overwhelming or has gone on too long.

Call me on: **07964 991689**

**E: Catherine@SmartHypnotherapy.co.uk**

Based in Winterbourne



# Frampton Cotterell and Coalpit Heath Village Diary 2016

## March 2016

**Sat 5th - Barry Walsh Band**, country music, WADCA, Watleys End, 8pm. Tickets £5. Tel: 01454 776268 or 07467 319373 email: ca.winterbourne@gmail.com / www.wadca.co.uk.

**Wed 9th - Carer's Club**, Zion, 2-4pm. Carers welcome to stay with the person they care for or use the free time as they wish. More details from Jean 01454 775786 or Rona 01454 886925.

**Fri 11th - Frampton Folk Music Club**, Crossbow, School Road, 8pm.

**Wed 16th - Community Coffee morning**, Manor Hall, Coalpit Heath, 10.00-12.00. Free entry. Sponsored by NISA. Alison Allan Tel: 07873 747513 for more details.

**Wed 16th - Frampton Local History Society**, Zion Church, 7.30pm. rockthom@btinternet.com.

**Sat 19th - Community Centre Dance**, WADCA, Watleys End Road. 7-11pm. Tel. 01454 774997.

**Wed 23rd - Forget-me-not Singalong Group**, Zion, 2pm-3.30pm. For local people who like to have a sing a long. Details from Jean 01454 775786 or Rona 01454 886925.

## April 2016

**Sat 2nd - The Alligators**, Rock 'n' Roll Band, WADCA, from 7pm. Tickets £8 in advance or £10 on the door. Tel. 07710 626746. email - ca.winterbourne@gmail.com

**Fri 8th - Frampton Folk Music Club**, Crossbow, School Road, 8pm.

**Sat 9th - Fun Pictorial Quiz**, WADCA 8pm. Teams of 6 but you can make up teams on the night. Bar from 7.30pm. Raffle. Tickets £5 tel. Margaret 01454 773370 or WADCA 01454 776268

**Wed 13th - Carer's Club**, Zion, 2-4pm. Carers welcome to stay with the person they care for or use the free time as they wish. More details from Jean 01454 775786 or Rona 01454 886925

**Wed 20th - Community Coffee morning**, Manor Hall, Coalpit Heath, 10.00-12.00. Free entry. Sponsored by NISA. Alison Allan Tel: 07873 747513 for more details.

**Wed 20th - Frampton Local History Soc**, Zion church, 7.30pm. rockthom@btinternet.com

**Wed 20th - Sat 23rd 'Patience', Winterbourne Musical Theatre**, WADCA, Watleys End, 7.30pm. Saturday matinee 2.30pm. Musical comedy. Tickets tel. 01454 317408 www.winterbournemusical.co.uk

**Wed 27th - Litter Busters**, 10am - 12:00, meet Heather Avenue.

**Wed 27th - Forget-me-not Singalong Group**, Zion, 2pm-3.30pm. For local people who like to have a sing along. Details from Jean 01454 775786 or Rona 01454 886925

## May 2016


**Wed 11th - Carer's Club**, Zion, 2-4pm. Carers welcome to stay with the person they care for or use the free time as they wish. More details from Jean 01454 775786 or Rona 01454 886925

**Thur 12th - Sat 14th - Winterbourne Players production**, WADCA 8pm

**Fri 13th - Frampton Folk Music Club**, Crossbow, School Road, 8pm.

**Wed 25th - Forget-me-not Singalong Group**, Zion, 2pm-3.30pm. For local people who like to have a sing along. Details from Jean 01454 775786 or Rona 01454 886925

Winterbourne Musical Theatre.  
40th Anniversary Production.



**PATIENCE**  
(Or Bunthorne's Bride.)  
By W.S. Gilbert & Sir Arthur Sullivan.

Wednesday 20th April to Saturday 23rd April 2016

Winterbourne Community Centre,  
Watleys End Road, Winterbourne, BS36 1QG

Tickets £9 Telephone 01454 317408

# Winterbourne Musical Theatre: 40 Years On!

Winterbourne Matters was delighted to hear from the Winterbourne Musical Theatre Group, which is celebrating its 40th anniversary with their forthcoming performance of *Patience*.

It was in 1975 that the idea of forming a group to be called The Winterbourne Singers was suggested by the late Edward Bailey the Rector, The Rev. Roger Clifton and Steve Bedell the organist, who invited members of the congregation of St Michael's Church to join with the purpose of staging one of Gilbert and Sullivan's operas.

Among those who expressed an interest was the Head of The Collegiate School (now Silverhill), Miss J.Cable. As a result the theatre of the school was the venue for the first production – "Trial by Jury" – 40 years ago this year! Productions were staged there until 1994 when the school was sold and the Winterbourne Community Centre thus became the new home for the group.

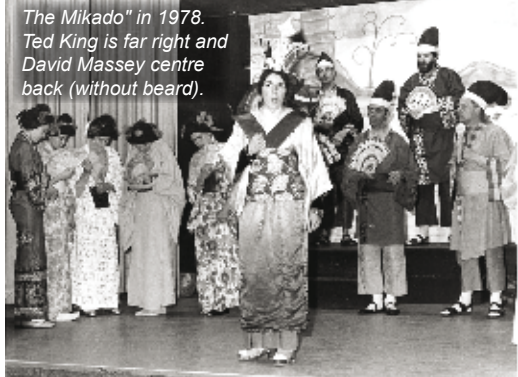
From the outset it was very much a family affair with both parents and children appearing together in many productions. In 1978 there were three members of the Massey family in the cast list of "The Mikado". Happily this is still true today as George Lunt and his daughters will all be performing in "Patience" this April.

Three of the group's current members are celebrating their 40th year with the company, Ted King, David Massey and Barbara Smith who are all in their eighties!

Times change. For the first 20 years the company only performed Gilbert & Sullivan, but changing tastes lead to a greater variety of programme. The group was renamed Winterbourne Operatic Society in 1981 and several years later became Winterbourne Musical Theatre, this reflecting more accurately the type of show being staged. In 1994 they were accompanied by an 18 piece orchestra – today it is just a piano!

This April, in celebration of its 40th Anniversary year, the Winterbourne Musical Theatre is going

The Mikado" in 1978. Ted King is far right and David Massey centre back (without beard).



back to its routes by performing Gilbert & Sullivan's *Patience*. The play satirizes the "aesthetic craze" of the 1870s and '80s, when the output of poets, composers, painters and designers of all kinds

was indeed prolific — but, some argued, empty and self-indulgent. This artistic movement was so popular, and also so easy to ridicule as a meaningless fad, that it made *Patience* a big hit. The topical nature of the story may make *Patience* somewhat less accessible to some modern audiences, and Gilbert & Sullivan fans tend to have strong feelings one way or the other about *Patience*.

Synopsis: All the well-born young ladies in the village, rapturously caught up in aestheticism, are in love with two contrasting aesthetic poets — a "fleshy" poet and an "idyllic" poet. But the poets

are both in love with *Patience*, the simple village milkmaid, who cares nothing for poetry. *Patience* learns that true love must be completely unselfish—it must wither and sting and burn! The girls' military suitors don't see the point to aesthetics, but they decide to give it a try to win the women's hearts. It is touch and go for awhile, but everyone ends up with a suitable partner, even if it is only a tulip or lily.

Winterbourne Musical Theatre is a lively and friendly group who make everyone welcome. They meet at the Winterbourne Community Centre at 7.30 every Thursday evening and are always on the lookout for new (and certainly younger) talent. Why not go along and join in? You never know what you can do until you try!



"Salad Days" from 2005. Barbara Smith is in the red hat.



"Songs that Won the Wars" are most recent show and the gent is David Massey.

## Fromeside Churches

The Parishes of Frampton Cotterell, Iron Acton,  
Winterbourne and Winterbourne Down

### Easter Services

#### St Michael's Church Winterbourne

**Sunday 20th March**  
10.30am Family Communion

**Monday 21st March**  
7.30am Holy Communion

**Tuesday 22nd March**  
7.30am Morning Prayer

**Wednesday 23rd March**  
7.30am Morning Prayer

**Thursday 24th March**  
7.30am Holy Communion  
7.30pm Joint Communion Meal

**Friday 25th March**  
9.30am Communion of the Cross  
11.00am Children Service

#### All Saints Church Winterbourne Down

**Sunday 20th March**  
10.00am Holy Communion

**Tuesday 22nd March**  
7.30pm Station of the Cross

**Wednesday 23rd March**  
9.15am Holy Communion

**Friday 25th March**  
9.15am Communion of the Cross

**Sunday 27th March**  
9.15am Parish Communion

#### St Peter's Frampton Cotterell

**Sunday 20th March**  
10.30am Family Communion

**Thursday 24th March**  
8.00pm Holy Communion & Watch

**Sunday 27th March**  
10.30am Family Communion  
6.00pm Evensong

Please also see details on Joint Easter celebrations  
with St Saviours & Zion Churches

#### St James, Iron Acton

**Sunday 20th March**  
9.15am Holy Communion

**Wednesday 23rd March**  
10.30am Morning Prayer

**Friday 25th March**  
10.30am Station of the Cross

**Saturday 26th March**  
7.30pm Joint Service - Four Churches

**Sunday 27th March**  
9.15am Family Communion

#### Bethesda Methodist Church Winterbourne Down

**Sunday 27th March**  
10.30 Easter Day service  
4pm Baptism and Confirmation

#### Salem Methodist Church Winterbourne

**Wednesday 23rd March**  
7.30 pm Film shown in the Church  
relating to Easter, all welcome

**Friday 25th March**  
11.00am Good Friday joint service with Bethesda

**Sunday 28th March**  
10.30am Easter Sunday Service  
6pm Easter Sunday Service



## YOUR LOCAL CHURCHES in FRAMPTON & COALPIT HEATH

Invite you to a journey of mystery and discovery

#### United Services:

13<sup>th</sup> March: United Evening Worship 6.00pm St. Peter's Church  
20<sup>th</sup> March: United Palm Sunday Worship 6.00pm St. Saviour's Church

#### Good Friday: Community Walk of Witness (incl rough timings!)

25<sup>th</sup> March: 10.00am St. Saviour's 10.45am St. Peter's  
11.15am Zion United Church (a short service followed by hot cross buns!)

#### Easter Sunday: Dawn Sunrise Service

27<sup>th</sup> March: 6.30am Early morning united worship at the Hillyfields (above Harris Barton)

#### ST. PETERS CHURCH

**Maundy Thursday**  
8.00pm Eucharist followed  
by Vigil until midnight.

**Good Friday**  
2.00pm The Cross of  
Christ. A service of music,  
readings and meditation.

**Easter Sunday**  
8.00am Said service of  
Holy Communion

10.30am Choral Holy  
Communion

6.00pm Choral Evensong.

[www.st-peterschurch.co.uk](http://www.st-peterschurch.co.uk)

#### ZION UNITED CHURCH

**Maundy Thursday**  
7.30pm Reflective 'Passover'  
style communion

**Good Friday**  
(as united services)

**Easter Sunday**  
10.30am Easter  
Celebration (for all ages)

6.00pm Easter Reflections

[www.zuchurch.co.uk](http://www.zuchurch.co.uk)

#### ST. SAVIOURS CHURCH

**Maundy Thursday**  
7.30pm Eucharist and  
Maundy Watch

**Good Friday**  
2.00pm Liturgy of Good  
Friday

**Easter Sunday**  
10.00am The Easter Liturgy

6.00pm Easter Evening  
Prayer

[www.coalpitheath.org.uk](http://www.coalpitheath.org.uk)

**For Catholic Services:** [www.stlawrenceandstpaul.co.uk](http://www.stlawrenceandstpaul.co.uk)

**PASTORAL VISITING** – The Fromeside Partnership of Churches provide a responsive visiting and befriending service. If you or someone you know in our community would like a visit from one of our Pastoral Visitors – need someone to talk to – we have a team of local volunteers representing the church who have received training and maintain high standards of confidentiality. A regular visit or telephone call from our trusted volunteers can make a real difference to the lives of those in need, for whatever reason.

**HOW TO CONTACT US** – Telephone one of the co-ordinators – Mary on 07542100417 or Rose on 07780936078 – or the Benefice office on 01454 776518.

**VOLUNTEER** – If you would like to put yourself forward to join our Pastoral Team and to reach out to our neighbours in our community contact the Benefice office on 01454 776518 for details.



Dear Friends,

By the time you read this the four churches in the forthcoming Fromeside Benefice, St Michaels Winterbourne, St Peters Frampton Cottrell, All Saints Winterbourne Down and St James the Less Iron Acton, will have been without a fulltime priest for 14 months. This is a situation that many churches have faced during my time as a Licensed Lay Minister. I was licensed in 1982 in the Oxford Diocese and by 1984 I was taking morning or evening prayer in churches on the Berkshire downs. These congregations knew they were to be linked with a neighbouring church and would have to share an incumbent.

The church over the centuries has built a support network that we have come to rely on and now we feel vulnerable, like the twig at the end of a branch in a high wind.

Over the past few days I have been reading again that great adventure story that we have in the Acts of the Apostles and as I read of the persecution and scattering of the church it struck me that so often situations of adversity frequently give organisations the opportunity to regroup and grow stronger.

I read of Stephen's vision before he was stoned to death, an act witnessed and approved by Saul; then of the persecution and dispersal of the infant church and also of Phillip's success in Samaria, and his encounter with the Ethiopian. Then we read of the one event that was to really move the young church out to everyone who would listen, the conversion of Saul. His experience on the road to Damascus, where it had been his intention to once again eliminate the Christians in that city, led to his conversion. Saul is cared for by Ananias and is baptised and, as we know from his three missionary journeys, he founded churches in the countries we now know as Turkey, Greece and Macedonia. We know of these churches because of his letters to them after he had founded them.

I think at this time when we feel so exposed we need to look at these churches in Corinth, Galatia, Ephesus, Philippi, Colossus, Thessalonica and his final destination Rome. They too must have felt very isolated and exposed when Paul left them to continue his work in other places, we have to remember that they survived. As we know from Paul's letters they had their difficulties but they came through them and survived, through them the Christian Church spread even further. At this time we need to be encouraged by the example they have given us and spread the good news of God's love to all we meet.

Wally Watkivs LLM, St Michaels, Winterbourne



### Solid roof conservatories

Enjoy shade in the summer and warmth in the winter.  
Insulated conservatory roofs, available for both new and existing installations.

t. 0117 9311777  
w. [associatedwindows.co.uk](http://associatedwindows.co.uk)  
e. [sales@associatedwindows.co.uk](mailto:sales@associatedwindows.co.uk)  
a. 32-34 Gloucester Road North, Filton, Bristol BS7 0SJ

Visit our **showroom** in **Gardener Haskins**

**Local & family** run

**Finance** available

Make a great impression.

FENSA Registered Company HomePro Insurance Checkatrade.com

## March at Winterbourne Library

**Open: Tue and Fri: 9.30 am - 7.00 pm**

**Wed & Sat: 9.30 am - 5.00 pm**

**Closed: Mon, Thur and Sun**

**Rhymetime:** Rhymes and songs for parents and babies/toddlers to enjoy together every Tuesday morning 9.30 – 10.00 am.

**Pre School Storytime:** Join us weekly on Wednesdays 9.30 – 10.00 am for stories and crafts, term time only.

### Pre-school Stay 'n' Play sessions!

Join library staff every Friday afternoon 2.15-2.45 pm for stories, colourings and play. This session will run throughout the year.

**Chatterbooks group** for young people in Years 5 and 6. The next meetings will take place on Saturday 19 March 2.30-3.30 pm.

**Book Group** for Parents will next be meeting on Friday 18 March – 3.00 pm. New members are welcome – please speak to a member of staff.

**World Book Day 2016** on Thursday 3 March Winterbourne library will have some £1 tokens to give out to pre-schoolers so make sure you get yours by visiting one of the events above. For more information about WBD visit <http://worldbookday.com/>

**Craft Group** the next meetings will take place on Saturday 5 and 19 March 10.00 am – 12 noon. New members are always very welcome.

**Reading group** would welcome new members. We meet at the library the third Tuesday in the month 7.30 – 9.00pm. If you are interested in joining us please contact Jenny Wellman tel: 01454 778849, email: [cjwellman@talktalk.net](mailto:cjwellman@talktalk.net).



### Take a look at what's on offer with a South Gloucestershire library card

With your card you can reserve and renew books online, download FREE e-books, FREE e-audiobooks and FREE digital magazines.

There are now 37 magazine titles to download monthly including BBC Wildlife Magazine, Cosmopolitan, Good Housekeeping UK, Gardeners' World along with many other popular titles! You can use your card to borrow books from the University of the West of England library as well as access Ancestry.com and Access to Research at your local library

If you're not already a member why wait any longer? Join for FREE at your local library or online at [www.librarieswest.org.uk](http://www.librarieswest.org.uk)

**For more information: Tel: 01454 868006**

**Email: [winterbourne.library@southglos.gov.uk](mailto:winterbourne.library@southglos.gov.uk)**

**Website: [www.southglos.gov.uk/libraries](http://www.southglos.gov.uk/libraries)**

**Twitter: @southgloslibs 'Like' us on Facebook: South Gloucestershire**

**Libraries for all the latest news.**

## Coalpit Heath

New premises:  
Mafeking Hall  
Serridge Lane  
Coalpit Heath

## Pre-School

We provide a happy, stimulating and caring environment for children aged 2-5yrs.  
Rated "Outstanding" by Ofsted.

Our NVQ trained staff are committed to delivering the highest quality of learning and care.  
Government funded places available.

- Breakfast club featuring mini me munchies (Lunchtime meals coming soon) ✓
- Exciting outdoor area - Forest School Sessions ✓
- Secure premises with sole use ✓
- Open 8am – 3pm Monday to Friday ✓

**To book your place please call:**  
**07715 531066 or 07979 475757**  
**E-mail: [Charnicholls12@hotmail.co.uk](mailto:Charnicholls12@hotmail.co.uk)**

## Fromeside Gymnastics Club

- Pre School Classes for walking age - 4yrs - mornings & early afternoons Monday - Friday.
- Recreational classes for school age children 4 - 17yrs - weekday evenings & Saturday morning.
- Adult sessions 18+ Monday 9-10:30am
- Over 50's fitness group - Friday 10-11am

For full timetables check the website [www.fromesidegym.co.uk](http://www.fromesidegym.co.uk)  
Contact us on: 01454 776873 Email: [office@fromesidegym.co.uk](mailto:office@fromesidegym.co.uk)



# Building the 'Heart of the Community'

Unable to attend the recent, hugely successful WADCA open day, I was pleased to pop in for a coffee and a chat with Business Development Manager - Mandy Nicholls, to hear more about the day and their plans for the future.

Excepting a rather raucous 40th birthday soiree, this was my first time within the community centre, which now employees a part-time management team to work alongside a dedicated committee, staff and network of volunteers. I was stunned at the sheer size of the centre, an almost labyrinthine space of rooms complete with stage, bars, skittle alley and sports hall, centred around a freshly decorated lounge area, where local artists are encouraged to exhibit and sell their work. The fresh, new turquoise decor of the skittle alley hints at the fifties diner feel the team aspire towards.

Mandy explained how the open day was designed to showcase the facilities on offer. The well stocked kitchen provided tasty jacket spuds, whilst a Keep-Fit group burst into flash mob exercise routines. Live music was provided by acoustic group - 'The Shillings', before Blues and Soul cover group - 'Kick the Cat' rocked the stage. Stalls selling an assortment of gifts and crafts were housed within the skittle alley.

Award winning start up company - Synergetic Media have also seen the potential in their local community centre and have opted to base themselves within an



upstairs meeting room. Keen to help out, this fresh faced team are redesigning posters and banners for WADCA as well as supporting their promotional campaigns.

Continuing their new approach, the WADCA team have reworked the newsletter into a full colour A5 magazine, packed with information on the numerous clubs and groups who make the community centre their home, alongside workshops, sports events and performances you may wish to attend or even host yourself! Rates are very competitive starting at only £8 per hour hire for members and with plenty of parking available, a fully licensed bar, utensils and crockery catering for unto 100 people, why travel further afield?

**Can you help?** - Looking to the future, the renovation campaign continues throughout 2016. The centre really needs the support of local businesses and individuals to complete this much needed revamp. Can you spare a few hours? - WADCA have been invited by Asda Patchway to raise funds by bag packing at checkouts. They ideally need a team of 10-12 cheerful, happy folk to help raise a fantastic £1,000!

**New members welcome!** - Don't forget, new members are always welcome, currently only £5 per year entitling a third off any room bookings!

**Find out more at the new website [www.wadca.co.uk](http://www.wadca.co.uk) or find, 'like' and share on Facebook - 'WADCA Winterbourne Community Centre'.**

Article by Lee-Anne Jameson

## Local Estate Agent Sponsors Sports Department

Mackendrick Norcott is the proud new sponsors of Frampton Cottrell C of E primary school sports department having supplied funding for PE teacher Mr Osborne to design four new full sports kits for the Netball, Football, Basketball and Rugby teams.

As a thank you, members of the Winterbourne-based estate agent were invited along to assembly to present the children with their new kits, and in return were presented with a beautiful bouquet of flowers (in company colours too!).

Mackendrick Norcott would like to take this opportunity to wish the children the best of luck in all their sports competitions for this year!

Mackendrick Norcott is the longest established estate agent in Bristol and South Gloucestershire, having survived and grown stronger through many market fluctuations in its 39 years. The local agent is actively engaged in selling, letting and managing property across a wide area surrounding its Winterbourne base and continues to work with its original objective in mind - "When we deal with customers we hope to retain their business for life and aim to provide a very personal committed service. Being a part of, and supporting, the local community has always been an important and integral part of our company and supporting the local primary school with their new sports kit is just one way in which we are actively involved."



01454 772 468

[www.mackendrick-norcott.co.uk](http://www.mackendrick-norcott.co.uk)  
10 High Street, Winterbourne, BS36 1JN

**Mackendrick Norcott**  
it's all about the service



For choice, control and total peace of mind, speak to your local expert about safeguarding your possessions and all the valuable things that you spend your life working hard for.

Appointments at a time and place to suit you, with

Jane Holzgrawe  
01454 775 067

[info@janeholzgrawewills.co.uk](mailto:info@janeholzgrawewills.co.uk) [www.janeholzgrawewills.co.uk](http://www.janeholzgrawewills.co.uk)

**JANE HOLZGRAWE**  
**WILLS**



**Thornbury Stairlifts**  
SALES SERVICING & REPAIRS



- New & Re-conditioned Stairlifts & Warranty
  - Removals & Relocations
  - Free Surveys & Quotes - No Obligation
  - Rentals for Straight Stairs
  - Independent, Professional & Friendly Advice
- Over 24 years practical experience



Independent Stairlift Specialist

01454 413 748 • 07833 318 722  
[www.thornburystairlifts.co.uk](http://www.thornburystairlifts.co.uk)



## FOCUS ON: Local resident Ian Haddrell

This month it was great to catch up with Frampton Cotterell resident Ian Haddrell, who is heavily involved in many aspects of community life, as well as being an accomplished author with a number of books in print.

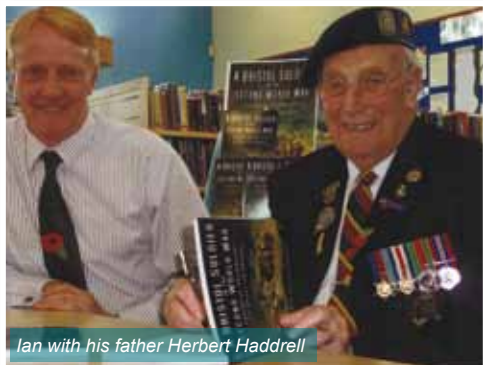
In future issues of Winterbourne Matters, we look forward to him contributing articles, in the meantime enjoy finding out more about this talented local resident.

### How long have you lived in Frampton Cotterell and what made you chose this area to set up home with your family?

My wife, daughter and I moved from Bristol to Frampton Cotterell 20 years ago, in 1995, having spent all of my life up to that point living in the city. We had all developed an interest in horse riding and wanted a more rural location to live in, in order to be closer to riding schools and stables, and our daughter Georgina was at an age when she was becoming interested in having her own pony. We liked the ambiance and feel of the Frampton area, the history of the place, the closeness to the countryside, and the sense of community in the locality.

### What are your favourite parts of village life?

With a keen interest in the past, I do enjoy the richness of the history, the old buildings and the dry stone walls which remain giving the area it's unique character. And despite Frampton Cotterell and Coalpit Heath being very much "commuter villages" there is nonetheless a great sense of community in the area, with many organisations available for local residents to participate in. I enjoy being able to walk to all the local amenities, whether that be the local pubs, post office, or the number of small shops, which need to be supported in order that they remain viable. I also enjoy the close proximity of the countryside and in particular the walks along the River Frome.



Ian with his father Herbert Haddrell

### I believe you were involved with the Twinning group, were there any particular memorable events that took place?

We joined the local Twinning Association soon after we came to Frampton Cotterell and I became actively involved, joining the committee before becoming Chairman for a number of years. Frampton Cotterell is twinned with Kelbra, located at the foot of the Harz mountains, a village that was formerly in East Germany. We have regularly visited Kelbra and welcomed German guests to our home, which has resulted in many long-standing friendships with many of the Kelbra residents. The actual twinning ceremonies, in Frampton and Germany were memorable events, as was my performance as James the Butler in 'Dinner For One', as part of the celebrations in Kelbra to celebrate 20 years of twinning! The short British play from the 1960s is shown on Germany television every New Year, and is something of an institution there.

### Can you tell me a bit about the local history group you are involved with? Did your association with the group lead to the publication of your first book Frampton Cotterell and Coalpit Heath?

Frampton Cotterell and District Local History Society has been active for many years, providing talks at their monthly meetings, carrying out research in local matters, and producing publications on local history. I have been on the committee for a number of years and was keen that the collection of old photographs and postcards, in the possession of Trevor and Maureen Thompson, was made more readily available to those with an interest in the area. Publication also ensures a permanent record. It was from this idea that the society produced its

first book of old photographs in 2007, followed by a second publication 'Frampton Cotterell and Coalpit Heath Revisited', five years later. We are planning to produce a third volume of old photographs in the near future, and always welcome contributions from residents who have old pictures that we could include. Our meetings, held on the third Wednesday of each month, 7.30 pm at Zion Church are well attended, reflecting the quality of the speakers and diversity of topics.

### You have gone on to write a number of other publications, how did you chose the subject matter for these?

I am very interested in local history, family history and have supported Bristol Rovers since I was a young lad. It's these interests that have determined the subject matter for the books that I have written. I attended Lockleaze Secondary School in Bristol, and rescued approximately 150 photographs of the school, that were going to be thrown away, when the school closed in 2004. These pictures formed the basis of the two Lockleaze books, together with former pupils' and residents' photographs. As previously mentioned I have been instrumental in the production of the two Frampton Cotterell and Coalpit Heath publications. Together with an old junior school chum of mine, Mike Jay, who happens to be a Bristol Rovers historian, we have co-authored four books about the club; two about successful seasons (1973-74, 1989-90) and two about significant former players (Geoff Bradford and Harold Jarman).

The book that I am most proud of is the one that I wrote telling the story of my father's experiences in the army in Normandy during the Second World War, 'A Bristol Soldier in The Second World War'. Fortunately I was able to publish it whilst both my parents were still alive.

My next project is a book of old photographs and history of Dings Crusaders, the Lockleaze based rugby club, who began their existence in the St Philips area of Bristol in the late 19th century. I would also like to publish a third volume of old Lockleaze photographs.

### If people would like to get hold of copies of one of your books where can they purchase them?

The books are available in book shops and from book sellers on the internet. The Frampton books can also be obtained locally from the society's Chairman, Trevor Thompson, on 01454 775265, and I have a stock of my own books, call 01454 772706.

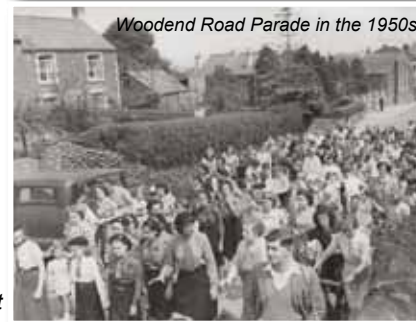
### Are there any other local projects you are involved with?

For three years I have been involved in helping to organise and run the Frampton Festival, a free community event for local residents, put together by a small group of volunteers, that takes place annually in Centenary Field, Mill Lane, Frampton Cotterell. This year's festival will take place on Saturday 16 July 2016, and will feature many of the usual attractions; fairground rides, beer tent, tractor rides, food stalls, entertainment, and live music. The finale will be the lighting of the beacon followed by a firework display. We are always looking for new or different things to include in the festival and welcome enquiries from anyone interested in being part of the festival. We rely entirely

on donations from local organisations, sponsorship, advertising and the generosity of local people to fund the event.

### If people would like to volunteer or get involved with 2016 festival who should they get in touch with?

We have started organising the festival already and if any one would like to join the committee or become a volunteer to help keep the festival running, then why not come along to one of our very informal committee meetings held alternatively at The Globe and The Rising Sun, the next meeting is on Monday 11 January 2016, 7.30 pm at The Rising Sun. If anyone would like to help on the day itself, even for just an hour or two, that would be a great help.





## Health Matters at Frome Valley Medical Centre

**Frome Valley Medical Centre (FVMC) is one of the larger GP Practices in the region, caring for 14,600 patients. The Practice is committed to providing a high standard of professional care to patients of all ages, as recognised by the recent 'Outstanding' Care Quality Commission result.**

FVMC adopts a holistic approach to medicine and hosts regular multidisciplinary Team Meetings to ensure that the best care is given to patients. There is an independent pharmacy next door, and the Surgery is utilised by visiting Health Visitors, Physiotherapists, Dieticians, Audiologists and Chiropodists, Diabetic Retinal Screening and Counsellors.

Doctors visit patients at residential and nursing homes locally. Practice Nurses run a variety of special disease management clinics for asthma, COPD, diabetes and heart disease. Patients with these conditions attend regular health reviews. We offer Cervical smears and contraceptive services, immunisations, travel health, child health and health promotion. Over 75 year olds are offered an annual health check and the most vulnerable patients are identified and regularly reviewed.

We have to date given 3,500 flu vaccinations to

patients this year. Do get in touch if you are eligible but have not yet arranged to have yours. You are entitled to a free flu vaccination if you are 65 years or above, or if you have a chronic condition such as diabetes, heart or kidney disease or asthma. We have also provided nasal flu vaccinations to children aged 2, 3 or 4 again this year. We offer private flu injections separately for those not eligible for the free NHS vaccinations at a cost of £10. Free Shingles vaccinations are also given to eligible patients who are 70, 78 and 79 this year, who should already have received an invitation.

If you care for a relative, friend or neighbour and would like support, do tell us. A carers group meet regularly at the surgery and find it a useful opportunity to support each other and exchange information. We also have an active Patient Participation Group which meets regularly to discuss the patient experience and help us to provide the best possible service. The Friends of Frome Valley Medical Centre continue to provide very valuable support, fundraising to purchase items of equipment which might otherwise be difficult to fund. All these groups welcome new members if you have a little time to spare. Do let us know and we will put you in touch.

**FVMC: Main Switchboard number 01454 772153. Out of Hours Service 111.**



### FROME VALLEY MEDICAL CENTRE

2 Court Road, Frampton Cotterell, Bristol, BS36 2DE. Telephone 01454 772153 [www.fromevalley.nhs.uk](http://www.fromevalley.nhs.uk)

**Frome Valley Medical Centre is an NHS medical practice which offers a broad range of services.**



#### NHS Services Include:

Management of chronic diseases  
Early / Late clinics for working people  
Family Planning and 'No Worries'  
Stop Smoking  
Carers Group  
NHS Healthchecks  
Immunisations

#### Plus a range of Private Services:

Travel vaccinations (including Yellow Fever)  
Medicals for employment and HGV  
Private Smears  
Physio, Acupuncture and Podiatry

**Opening Times:** Monday 8.00 am - 6.30 pm Tuesday 7.30 am - 7.00 pm  
Wednesday 7.30 am - 7.00 pm Thursday 8.00 am - 6.30 pm Friday 8.00 am - 6.30 pm

The surgery offers a variety of clinics during these times. Phone lines are open from 8.00 - 6.30

## Wind Band Association Celebrates Charity Status

Two years after its formation, Avon Wind Band Association is celebrating being granted full registered charity status by the Charity Commission.

The Association came into being in February 2014. It comprises four bands with a total of nearly 90 members. Between them the bands cater for players of all levels and abilities ranging from Grade 8 players to complete beginners.

The Phoenix Wind Band (top photo) is the senior band with the majority of its 28 players being of Grade 6 standard and above. It rehearses at Emersons Green Library on a Monday evening. The Phoenix Band was also formed in 2014.

The Apollo Band (photo 2) has been together for just over three years and caters for players of around Grade 3 and 4. It meets in Yate on a Tuesday evening.

The Westerly Winds Staple Hill Band (photo 3) has been playing for just over two years and, as its name implies, meets in Staple Hill Library on a Wednesday evening.

The most junior band is Winterbourne Winds (photo 4) which was formed just under eighteen months ago for complete beginners and returners. They meet at the Greenfield Centre, Winterbourne on a Thursday evening.

Having a "family of bands" at all levels offers the opportunity for players to move to a different band as their skills develop. Currently the minimum age for band membership is 18 years but the Association is on the point of offering membership to 16 and 17 year olds. Although based in South Gloucestershire, many of the players were attracted to the bands from further afield.

Keith Hunt, Chairperson of the charity, said "We are always open to welcome new members of all abilities and it would be a fitting way to celebrate the new status of the Association if the membership reached 100 this year."

**Anyone interested in joining should contact Keith on 0117 9049125 or by e-mail [keh35@blueyonder.co.uk](mailto:keh35@blueyonder.co.uk) who will be pleased to answer any questions. Further information can be found on the Association's website**

[avonwindbandassociation.com](http://avonwindbandassociation.com)





## Community Matters cont ...



**Volunteer to bring joy to the lives of older people:** Volunteers (aged 50+) are sought by respected charities, Alive! and RSVP, to lead activity sessions for older people in care homes involving music, poetry, reminiscence and armchair exercise. Make a real difference to the lives of older people and have a great time doing it. Comprehensive training and ongoing support will prepare you for one of the best voluntary roles in town. Feel good, meet new people, develop your skills and use your outgoing personality to light up lives in Bristol care homes. For further information: contact [jan.snook@rsvp-west.org.uk](mailto:jan.snook@rsvp-west.org.uk) or [ken.dolbear@rsvp-west.org.uk](mailto:ken.dolbear@rsvp-west.org.uk) or 0117 942 3085

**South Gloucestershire Fine Arts Group presents Shakespeare and Company with Nicole Mezey** Nicole's lecture on Thursday 17th March celebrates the 400th anniversary of Shakespeare's death by looking at the visual and material world and social changes which influenced him. He left a Warwickshire village for the intrigue, glamour, fear and squalor of London. An age of portraits, playbills, parades, theatres, a Virgin Queen and an anti-smoking, witch-hunting king. Meeting at Bradley Stoke Community School BS32 7BS (near Bradley Stoke Library and Leisure Centre), we are a friendly group and always pleased to welcome Guests and new Members. Refreshments from 7.00 pm, welcome and slide illustrated lecture at 7.30 pm. Good parking & easy access. To join us please call Sally Kitching on 01454 774401 [sallykitching@googlemail.com](mailto:sallykitching@googlemail.com) <http://sgdfas.org.uk>. No artistic ability required – just an enquiring mind and an interest in the Arts.

**Winterbourne Down Society are hosting a presentation on the plans for new housing in North Bristol** Tim Bowles, councillor South Glos., will talk about the plans, which involve identifying land in the North Bristol area to build 68,000 new homes. *What are the implications for Winterbourne Down, Hambrook and Moorend? How can we influence the planning process?* **The meeting is on Tuesday 15th March 2016, 7.30pm in All Saints Church Hall, Winterbourne Down.** The talk will be followed by the Winterbourne Down Society AGM. Members are welcome to stay for this.

**Barnforce Morning** Usually the 3rd Saturday each month, 10am-1pm. A small friendly group which maintains and improves the barn site, and tends the productive garden. Anyone welcome on any Barnforce morning – ring Robert on 0117 957 4921 for details or just turn up! Check the website for dates. [www.WinterbourneBarn.org](http://www.WinterbourneBarn.org)

**Garden Group** Friday mornings 9.30 - 12.30. For 5 years we have been growing vegetables at the Barn and selling some produce to 'Melanie's Kitchen' in Downend. The Barn acts as a allotment for people who have some, or no, expertise in growing vegetables, to learn and have fun. We meet on site on Friday mornings in a very informal manner - those who want to turn up do. For more details ring Liz Smith 01454 775306. [www.WinterbourneBarn.org](http://www.WinterbourneBarn.org).

**South Gloucestershire Young Entrepreneur's Award 2016: Be recognised as a young entrepreneur!** A small group of independent business owners in South Gloucestershire have decided to encourage young entrepreneurs with their business idea or venture. Past and present Committee Members of South Gloucestershire's Branch of the FSB (Federation of Small Businesses) are supporting this award scheme, some of whom will form the assessment panel of judges. The idea is to actively encourage young entrepreneurs with their ideas and offer them the opportunity of being assessed and recognised by experienced business people in the area. This is not meant to be an onerous or daunting process. We currently have the support of South Gloucestershire Council, John Lewis, The Lost Coin Financial Planning Ltd., OdysseyWEB and are in consultation with a variety of local business owners. Prizes are financial, vouchers, work experience, mock interviews, recognition etc. Entries are completely free, but must comply with the criteria found on the front of the website <http://www.sgyea.co.uk/>

**Helpline Volunteers Needed** Womankind Helpline offers listening support to women experiencing mental health difficulties and emotional distress including those with experience of domestic and sexual abuse. We are seeking volunteers for our next training course which starts in April 2012 – the training and the Helpline are run from our offices in central Bristol. We offer: High quality training programme; Experience of volunteering using listening skills; Support and supervision; Expenses; An opportunity to meet and socialise with other volunteers. For further information or an application pack contact Nicola or Suzi at [nicola@womankindbristol.org.uk](mailto:nicola@womankindbristol.org.uk) or [suzi@womankindbristol.org.uk](mailto:suzi@womankindbristol.org.uk) Tel 0845 4582914 or 0117 9166461. Please note that this role is best suited to women only, over the age of 21years.

**Antique & Vintage Fair, Sunday 3rd April 10am-3.30pm**, Ashton Court Mansion, Long Ashton Bristol BS41 9JN, 40 quality stalls - all in doors. Antiques & Collectables; Vintage & Reclaimed; Café with afternoon cream teas; £2.00 entry (under 16s free); Car Park access: Kennel Lodge entrance; off Portishhead Rd A369

## Useful Trades & Services for the Home & Garden

### Garage Doors

Installation | Maintenance | Repairs

Your local independent garage door specialists

Up & Over Doors | Sectional Doors | Roller Doors



VARIETY OF STYLES  
TO SUIT YOUR REQUIREMENTS

Call Brunel doors  
for your free no  
obligation quotation

**BRUNEL DOORS**

**01454 882212**

Visit our website: [www.bruneldoors.co.uk](http://www.bruneldoors.co.uk)



Rubber Flat Roofing  
Pitch Roofing • Sun Tiles  
u.P.V.C. Cladding & Guttering  
Velux Windows • Lead Work  
All Remedial Work

*ALL WORK  
GUARANTEED*

**TEL: 01454 250148**  
**MOBILE: 07831 616184**  
**[www.coverallroofing.co.uk](http://www.coverallroofing.co.uk)**

**Build Assure**  
Building with confidence



**A E Rollin & Sons Ltd.**



Family run Builders & Roofing Contractors, Established 1959

Extensions : Renovations : Conversions : Refurbishments

Brick & Stone work : Carpentry : Roofing : Patios & Paving : Fascias & Soffits

49, Nicholls Lane, Winterbourne, Bristol. Tel 01454 773684

email : [aerollinandsons@hotmail.co.uk](mailto:aerollinandsons@hotmail.co.uk)

**Greenslade Lawn & Garden Services**

Specialising in:-  
Regular Grass Cutting, Strimming  
Hedge Cutting, Fence Painting,  
Lawn Fertilisation & Weed Control.  
Prices from £10 with free fertilisation & weed kill  
**Call Chris:- 07786 392241 or 01179 406854**

### CWG DESIGN & BUILD LTD

Local reputable building contractors with over 30 years experience  
experience refs available upon request  
New builds with NHBC warranty, extensions, loft conversions, annexes, renovations, roofing, registered installer of CrysticROOF GRP System (Glass Reinforced Polyester Roofing System), and lots more



Registered builder  
Tel: 07980 858249, 01454 501104,  
email: [cwg@talktalk.net](mailto:cwg@talktalk.net)



## GAS HEATING AND PLUMBING PROBLEMS

Resolved inexpensively by friendly local Gas Safe engineer  
All work fully guaranteed - No VAT - No callout charge  
Landlords Certificates - Boiler Replacements - Servicing  
All makes and models - Cookers - Fires - Weekends / Evenings

**Peter Rycroft 01454 250530 / 07968 281317**

Visit Owl's Website at [www.atpitch.com](http://www.atpitch.com)



**DAVE  
JAMES  
01454  
771830**

## WINDOW CLEANING DOMESTIC & COMMERCIAL

The Reach & Wash System cleans with greater efficiency than conventional methods.

Environmentally friendly, no detergents or chemicals are used.

Reaches previously inaccessible windows with ease.

Maintains privacy.

## 'All Angles Covered' Plastering Services

All aspects of plastering work undertaken

**Neil Gaynor**

**Tel: 01454 613441**

**Mobile: 07779 588541**

E: [neilgaynor@allanglescovered.co.uk](mailto:neilgaynor@allanglescovered.co.uk)

Reliable, competitive and professional



**M. E. S**



**Millard Electrical Services**

- Additional lighting & Power • Showers.
- Kitchen Upgrades • Fuseboard Replacements
- Outdoor power • Complete rewires • Fault finding
- Testing • Landlord certificates

Please contact Tom for a free quotation on:

**Tel: 01179 099263 Mobile: 07828 555925**

**Email: [tmillard-mes@hotmail.co.uk](mailto:tmillard-mes@hotmail.co.uk)**

## ELITE HYGIENE SERVICES DEEP CLEANING SPECIALIST!

- Kitchens • Washroom & Toilet Descaling
- Carpets • Upholstery
- Fire & Flood Damage
- Patio & Gutter Cleaning
- Painting & Decorating
- EMERGENCY DRAIN CLEANING SERVICE

**CALL (01454) 777826**

**MOBILE (07850) 873067**



**MD Aerials**

Call Michael Dagger

Freeview – Freesat – Sky – DAB Aerials



Wall mounting LCD or Plasma

televisions – setting up & tuning



[mike@mdaerials.co.uk](mailto:mike@mdaerials.co.uk)

[www.mdaerials.co.uk](http://www.mdaerials.co.uk)

**T: 01454 418 341 - M: 07817 304 236**

**Emergency number: 07798 905 337**

Keep it in your mobile

## Lock Stuck and Barrels

*The complete door and window service*

Locked out?

Need to replace or  
change your locks?

- Swift LOW cost emergency service to all home/commercial lock outs.

- Non destructive methods gaining entry quickly and efficiently from the initial call.

- Keys or handbag stolen? Burgled! Need your locks changed or re keying on a new home, call us.

**ALSO: LOW cost Repair / replacement of UPVC / ALUMINIUM WINDOW and DOOR: LOCKS, HINGES, HANDLES AND MISTED UP / BROKEN DOWN DOUBLE GLAZED UNITS.**

Full explanation and costs given before any works carried out. All work fully guaranteed. No call out fee

**Call Dave on 07798 905 337**



[www.thebristollocksmith.co.uk](http://www.thebristollocksmith.co.uk)  
Based in Frampton Cotterell



## J G Carpentry

Property Maintenance & General Building

- Extensions
- Staircases
- Flooring
- Skirting Boards
- Internal/External Doors
- Kitchens
- Bathrooms
- Paving
- Decking/Fencing
- Fascias/Guttering

For a free no obligation quote contact Jim on:

**01454 851032 or 07738934875**

[www.jgcarpentry.com](http://www.jgcarpentry.com)

## MT Garden Solutions

For all your gardening needs

- Grass Cutting
- Hedge Trimming
- Garden Maintenance
- Fencing
- Decking & Patios

Contact Mark on: **0771 4255392**

[www.mtgardensolutions.co.uk](http://www.mtgardensolutions.co.uk)

## Inspired Bathrooms

Design & Installation

- Bathrooms
- Wetrooms
- Tiling
- General Plumbing
- Workmanship guaranteed
- Portfolio and references available on request

Call us on

**01173 307 537 or 07853 069 280**

[www.inspiredbathrooms.net](http://www.inspiredbathrooms.net)

[inspiredbathrooms@hotmail.co.uk](mailto:inspiredbathrooms@hotmail.co.uk)

Inspired by you, designed & installed by us



**AK PLUMBING**

Dripping tap? Burst pipe? Toilet won't flush?

From full bathroom suites to outside taps  
and everything in between

We carry out all plumbing maintenance and repairs

**24-Hour Emergency call out**

**0774 775 0136**

**Give us a call:**

**01454 600375**

[www.akplumb.co.uk](http://www.akplumb.co.uk)

Covering Winterbourne, Frampton and surrounds

## Huw Morgan Garden Services (Dip. Hort)

**30 Years Experience**

**Maintenance, Fencing, Paving etc**

**0117 937 3850**

**07710 740 478**



**MSWORD HOME IMPROVEMENTS**

- Plastering • General Building • Property Maintenance
- Kitchen and Bathroom Installations

For a local reliable service  
**Call Mark on 01454 856554 0771 7863127**  
 Email: [msword67@live.co.uk](mailto:msword67@live.co.uk)

**Frampton Garage**  
 (SOUTH GLOS LTD)

MOT's **£34.95**

MOT's, Repairs, Servicing,  
 Tyres, Tracking, Clutches,  
 Cam-belts, Diagnostics,  
 Electrical Repairs,  
 Air-con, Welding.

76 Woodend Road 01454 777841  
 Coalpit Heath 01454 777607  
 Bristol 07879 477713  
 BS362LH 07436 814852

Email: [framptonsouthglos@btconnect.com](mailto:framptonsouthglos@btconnect.com)  
 Website: [www.framptongarage.com](http://www.framptongarage.com)  
 Family based business

**THE AERIAL MAN (DAN GRACE)**  
 Local engineer

- Digital Aerials • Fully Guaranteed • Repairs
- Sky Work • Free Quotes • OAP Discounts
- Poor Reception Problems • Additional TV Points

**01454 660 046 07818 413 451**  
[www.dangraceaerials.co.uk](http://www.dangraceaerials.co.uk)

[www.allworksplumbingandheating.co.uk](http://www.allworksplumbingandheating.co.uk)

ALL general plumbing work undertaken

**ALL WORKS BRISTOL LTD PLUMBING & HEATING**

Enquiries: 01454 279 162

For all your Plumbing & Heating needs call your local, friendly professionals

Accredited installers for Worcester Bosch and Vaillant

No callout charge  
 Boiler Servicing/Repair and Full Installation

**Which?** Trusted trader

**safe** 532573

All major credit & debit cards accepted

**FRAMPTON TAXIS**

ALL UK AIRPORTS. PORTS & STATIONS COVERED  
 4, 5 & 6 SEATERS AVAILABLE  
 Lady driver available on request.

For a Friendly Prompt Service call or E-Mail:  
**07960 067767 • 01454 279517**  
 E: [framptontaxis@tiscali.co.uk](mailto:framptontaxis@tiscali.co.uk)  
[www.framptontaxis.co.uk](http://www.framptontaxis.co.uk)

From a single tile to a whole roof, all build and roof works undertaken, pitched and flat.

**ROOF-TECH** Bristol

We have over 20 years experience are fully insured and all work is guaranteed.

For a FREE, no obligation quote and roof survey, just give us a call.

Office: **01454 615354** Mobiles: **Ben Peters: 07724 681620** or **Steve Coles: 07724 639830**  
 E-mail: [roof-tech@hotmail.com](mailto:roof-tech@hotmail.com)

**1st Call**

- Lock Opening
- Garage Security Locks
- High Security Padlocks
- Digital Locks
- Locks for uPVC Doors & Windows

**KEYMASTER**

www.keymasterbristol.com

9 Hither Mead  
 Frampton Cotterell  
 Bristol BS36 2SJ

**Local Mobile Locksmith**

MLA Approved Locksmith Company Providing Fast, Personal Service at competitive Rates

Major Credit Cards Accepted

**Carl Jenkins** MMLA MBMI  
 Locksmith Engineer

**0117 957 0011**  
 E: [info@keymasterbristol.com](mailto:info@keymasterbristol.com)

**P.M. Autos**

Unit 2 kendleshire Farm, Down Road, Winterbourne Down Bristol BS36 1AU

- Car & Van servicing & repairs
- Tyres
- Brakes
- Exhausts
- Air Conditioning
- Clutch & Cam Belt Replacement
- MOT
- Repairs
- Welding

**Telephone: 01454 775757 Mobile: 07831 33 11 57**

**ACE TAXIS**

Covering Winterbourne, Frampton Cotterell, Coalpit Heath & surrounds

SHORT & LONG JOURNEYS  
 STATION & AIRPORT BOOKINGS

ALL MAJOR DEBIT & CREDIT CARDS ACCEPTED

**TEL: 01454 626 837 / 07971 775 615**

**M K Perry SKIP HIRE**

MINI • MIDI • 6 YARD

**For a fast - reliable - local service**

Covering Winterbourne, Frampton and surrounding areas

**Tel: 01454 228686 Mobile: 07836 372381**

**JB Glass & Glazing**

- Glass Cut While You Wait
- UPVC - Repair Work on Misted Units
- Replacement - PVCu Windows & Composite Doors, 10 year guarantee on parts and labour
- Mirror Showroom - Mirrors cut to size

• Glass Splashbacks any shape, colour or size

FENSA REGISTERED

**Tel: 0117 9693778 / 9793980**  
 Email: [sales@jbgglazing.net](mailto:sales@jbgglazing.net)  
[www.jbgglazing.co.uk](http://www.jbgglazing.co.uk)

**10% OFF with this advert**  
 quote WMJB upon enquiry  
 T&C apply see in store for details

**367 Filton Avenue Horfield, Bristol BS7 0BD**

## Vacuum Service Centre

**Free collection & delivery service**

**Local Family Run Business**

**Dyson's a speciality**

**Full Service Just £27**

**For Most Models**

**Plus any parts required**

## Carpet Cleaning

**Using the latest TEXATHERM system**

- Carpets usually dry in one hour
- We also clean all types of Rugs Dining Chairs & Lounge suites
- A top quality service from a friendly local company

**For free quotations call Steve on:**

**07870 704093 / 01179 048 398**

**K J Conner & Son**

## LJP CONSTRUCTION

**Quality Building work At Competitive Prices**

**We offer a vast range of services to suit every budget from:**

- **Complete internal and external domestic and commercial property renovation.**
- **Small Repairs - Minor Building Works**
- **Roofing • Rendering • Extensions**
- **Conversions / Stand Alone Structures**

*Our aim is to provide every customer with an assured, affordable, professional, unrivalled, quality service from start to finish.*

*No job is too big or too small.*

**For a no obligation quote contact Lewis on:**

**Tel: 01454 853 975 Mob: 07837 065 902**

**E: ljpconstruction@hotmail.com**

**Based in Frampton Cotterell**

## DOWNEND BLINDS (BRISTOL) LTD.

**Family Run Company Serving Your Local Community**

**VERTICAL • VENETIAN • ROLLER • ROMAN**

**WOOD • PLEATED • PERFECT FIT**

**CONSERVATORY BLINDS • CURTAINS • POLES**

**FREE FITTING AND MEASURING**

**NO OBLIGATION QUOTES**

**FREE DESIGN SERVICE**

**CALL DAVID OR JAYNE:**

**TEL: 0117 949 5374 OR 01454 856 606**

**20 Lulworth Crescent, Downend, Bristol, BS16 6SB**

## R & B ROOFING

**DOMESTIC & INDUSTRIAL ROOFING**

- Flat Roofs • UPVC Fascias & Cladding
- Steel Sheetting & Cladding

**Members NFRC No 5042**

**Tel: 01454 250 144**

**Mobile: 07768 357 040**

## ALEXANDRA CORK HOME DESIGNS

**Architectural plans drawn for your home**

**QUICK ACCURATE ~ AFFORDABLE SERVICE**

**FREE CONSULTATION DESIGN & ADVICE**

**SURVEYS AND PLANS DRAWN**

**PLANNING PERMISSION SOUGHT**

**07867 592195 • info@alexandracork.co.uk**

**www.alexandracork.co.uk**

## GARY SMART ELECTRICAL

**Domestic & Commercial Installations**

**All electrical work undertaken**

- **Rewiring • Lighting • Bathroom Showers**

- **Kitchens • Garden & Garages**

- **Safety inspections • Periodic testing**

- **Fault finding and Repairs.**

**Based locally in Downend**

**Fully qualified City & Guilds Electrician**

**17th Edition Part P registered.**

**Mobile: 07805 070 947**

**Home: 01179 871 437**



**All backed with a 6 year Niceic insurance policy**

## 'Jill Of All Trades'

*A reliable female who can add a woman's touch to a professional service*

- **Painting & decorating**
- **Home maintenance**
- **Curtain making**

With several years' experience in the above, I'm willing to take on jobs ranging from a ceiling needing a coat of paint, to odd jobs that need finishing around the house, to a complete room makeover.

I can also offer advice on colour schemes and decor to co-ordinate with existing furnishings.

I'm happy to do the jobs larger companies aren't prepared to do!!

**Call Alex**

**on 01454 886537 or 07919 554658**

**Email: alexcrice@hotmail.com**

**PVCu Fascia Boards**  
**GUTTERING**  
**SOFFITS**  
**CLADDING**

**FASCIA lift**

**01454 269011**  
**07813 006950**  
**matt@fasciabristol.co.uk**  
**www.fasciabristol.co.uk**

## A1 AERIALS

- **Registered Digital Installer**
- **Digital TV Aerials**
- **Sky Digital / Freesat**
- **Repairs • Extra TV Points**
- **Phone now for Free Quotation**



**07956 491495 / 01454 318873**

**www.A1aerialsbristol.co.uk**

## D-CR DOMESTIC APPLIANCES



**DOMESTIC APPLIANCE SALES AND REPAIRS**

- **WASHING MACHINE**
- **TUMBLE DRYER**
- **DISHWASHER**
- **FRIDGE FREEZER**
- **COOKER**
- **HOB OR HOOD**

**Tel 01454 850522 or 07917441539**

**EMAIL: d-cr@live.co.uk**

**www.d-crdomesticappliances.co.uk**



**www.barkeysdoggiedaycare.weebly.com**  
 7.30am - 6.30pm Mon - Fri. Insured. Licenced by South Gloucestershire Council  
 Based in Winterbourne covering all areas.  
 Overnights offered to daycare dogs. Owners living onsite  
 Do you worry that your dog is bored at home alone all day?  
 Does he/she have lots of energy at the end of the day when all you want to do is relax after a long, hard day at work?  
 Then why not bring your canine friend to Barkeys Doggie Day Care for fun and interaction with other like minded canine friends.  
 Contact : 0771 574 5854 OR 07814 833 045

weekends by arrangement




**South Gloss Decorating**  
 Interior / Exterior  
 Affordable, Reliable, Professional  
**Please ring David**  
**Tel: 0117 956 9932**  
**Mob: 07739 382 524**  
**email: davebeauchamp@msn.com**



**OVENCLEAN**  
 The original oven cleaning specialists  
 Ovensclean will transform your oven and put the sparkle back into your kitchen!  
 Local, friendly, professional, reliable  
 Eco-friendly cleaning, no fumes, no mess  
 Call Nigel or Suzanne on  
**01454 415506 or 07557 110932**  
 www.ovenclean.com



**Liza and Sharon**  
**Domestic Cleaning Services**  
 • Weekly & Fortnightly Cleans  
 • Spring Cleans  
 • Fully Insured Operatives  
**Tel: 01454 777 248**  
**Mob: 07971 013 914**



**APS**  
**Landscaping & Groundworks**  
**Equine & Agricultural**  
**M: 07973 101720**  
**Fax 01454 776789**  
 • Mini Auger-for post hole drilling  
 • Hydraulic Breaker-for concrete breaking  
 • Mini Mower-for hard to reach places  
 • Micro Digger for 2'6" access points  
 • Bramble / Hedge trimming • Fencing & Gates  
 • Concreting • Footings • Ditches / Drain work  
 • All weather surfaces • Riding arenas  
 • Ponds & Lakes • Paddock care • JCB Work  
**Adrian Sarkar**  
 CPCS Registered Operator  
**E: adriansarkar@googlemail.com**  
**www.apsgroundworks.com**  
 Based in Frampton Cotterell





**Want to shout about your local business?**  
 Call Wendy!  
 It's EASY to appear in the next edition of Winterbourne & Frampton Matters  
**0771 574 5854**



**DG PROPERTY MAINTENANCE**  
 • KITCHENS • BATHROOMS • CARPENTRY  
 • PAINTING & DECORATING • PATIOS  
 All Property Maintenance Undertaken  
 No Job Too Small  
 For a no-obligation Quote  
**Please Call Dean on: Day: 079466 82167**  
**Evenings: 01454 600699**  
 Local Reliable Service ~ References available

**BonneFreshClean**  
 Carpet & Upholstery Cleaning Specialists  
**NCCB**  
 Professional carpet, upholstery and leather cleaning carried out with care by an all-female team  
 For a free no obligation quotation call Karen on  
**01454 436001 or 07774 908410**  
 www.bonnefreshclean.co.uk  
 44 Townsend Lane, Almondsbury, Bristol, BS32 4EQ



**Arby's**  
 Home gardening  
 Professional and reliable garden care.  
 One-off visits or regular garden maintenance.  
**Our Services Include:**  
 Garden Clearance  
 Lawn Maintenance  
 Hedge Trimming  
 Patio Cleaning  
 Weeding / Planting  
 General Maintenance  
 Please contact Richard on:  
**01454 886537 / 07779874439**  
**enquiries@arbysgardening.co.uk**



**Nevermow Lawns**  
 artificial grass installation  
**NO more mowing**  
**NO more waste**  
**NO more weeds**  
 Problems with the lawn mower?  
 No more mud in the house!  
 SPEND MORE TIME relaxing...  
 and not cutting the grass!  
 Dog friendly  
 Attractive all year round  
 BASED IN EMERSONS GREEN  
**CALL PHIL FOR A COMPETITIVE PRICE**  
 NEVERMOWLAWNS@YAHOO.CO.UK  
**07444 264862**



**D. R. BOND**  
**Plumbing & Heating**  
 Bathroom Specialists  
 From fixing taps & Showers to Full Bathroom Installations  
 New Central Heating Systems  
 Boiler Replacements  
 Plumbing Maintenance  
 Special Offer: Complete bathroom suite supplied & fitted  
 + up to 9m of free tiling for £1099 + vat. T's & C's apply  
**Tel: 01454 852 189 or 07528 105 781**

**W.J.M Plumbing & Tiling**  
 FULLY QUALIFIED  
 Ciphe Member  
 24 hour call out - No Job Too Small  
 Bathrooms ~ Kitchens  
 Unblocking Drains ~ Leaks Repaired  
 Reliable, Affordable  
 Friendly Service.  
**TEL: 01454 851830**  
**MOB: 07902 383219**  
 Based in Coalpit Heath



# Index of Local Advertisers

<b>Accounting</b>		<b>Electrical Appliance Repairs</b>		Bubbles dogwash	16
Hards Tax Services	10	DC-R domestic appliance repairs	43	Companions Haven pet cremation	16
<b>Architect</b>		<b>Estate Agents/Property Letting</b>		Sue's Pets	16
Alex Cork	43	Mackendrick Norcott	1,31	Winterbourne Rabbits	17
<b>Bathrooms / Fitting</b>		AJ Homes	1	<b>Plasterer -</b>	
All Works	40	<b>Gardens / Garden Maintenance</b>		All Angles	38
Inspired Bathrooms	39	Arby's Garden Svcs	45	<b>Plumbing/heating engineers</b>	
<b>Bicycle Repair</b>		Bartlett Tree Experts	13	All works plumbing/Heating/Bathrooms	40
Rule 4 Cycles	4	CJP Landscapes	47	AK Plumbing	39
<b>Blinds</b>		Greenslade Grass Cutting	37	Capricorn Plumbing	47
Downend Blinds	43	Huw Morgan Garden Services	39	Dr Bond	45
<b>Builders/Groundwork/property svcs</b>		MT Garden solutions	38	Peter Ryecroft Plumbing/Heating	38
A E Rollin Builder	37	NeverMow Lawns	45	WJM Plumbing/Tiling	45
APS Groundwork	44	<b>Glazing -</b>		<b>Recruitment</b>	
Bristol Sunrooms	11	Associated Windows	28	Shampers Salon	9
Coverall Roofing	37	J B Glass and Glazing	41	<b>Schooling/Tuition -</b>	
CWG Design & Build Limited	37	<b>Golf /Country Club</b>		Coalpit Heath pre-school	29
DG Property maintenance	45	The Kendleshire	6,12,21	Kumon	4
LJP Construction	42	<b>Hair / Beauty/Massage -</b>		Language services	13
R&B Roofing	43	Aura hair nails and beauty	10	Oscars pre school/Holiday club	8
Rooftech	40	Beauty Plus	9	Redland High School	7
Sword Home Improvements	40	Richard Bawn men's hairdressing	11	Winterbourne Early Years	6
<b>Cakes/cooking -</b>		Shampers	9	<b>Sewing Alterations</b>	
Medway Designs	10	<b>Handyman / various skills offered</b>		Medway Designs	10
<b>Carpet &amp; Upholstery Cleaners</b>		Alex Handywoman	42	<b>Slimming Clubs</b>	
Bonne Fresh Clean	45	<b>Health &amp; Fitness -</b>		Slimming World	8
Conner & Son	42	Frome Valley Medical centre	34	<b>Skip Hire</b>	
<b>Car / Motorbike- Repair/Valet/MOT</b>		<b>Home / Kitchen -</b>		M K Perry	41
Frampton Garage	40	Curtain company	22	<b>Social/Community &amp; Clubs-</b>	
P M Autos	41	Oven Clean	44	Fromeside Gym Club	29
<b>Carpenter -</b>		<b>Home Improvements -</b>		<b>Stairlifts</b>	
J G Carpentry	38	Fascialift	43	Thornbury stairlifts	31
<b>CCTV</b>		Southern Plasticad	48	<b>Taxi Service -</b>	
All Angles CCTV	6	<b>Hotel/Conference/Weddings</b>		Ace Taxi	41
<b>Child Care</b>		Holiday Inn	18,19	Frampton Taxis	40
Coalpit Heath pre-school	29	<b>Insurance -</b>		<b>TV / Aerials -</b>	
Oscars pre school/Holiday club	8	AgeUK concern	22	A1 Aerials	43
Pooh Corner Day Nursery	21	<b>Locksmith -</b>		Dan Grace Aerials	40
Winterbourne Early Years	6	Keymaster	41	M D Aerials	39
<b>Cleaning &amp; Domestic Services</b>		Lock Stuck and Barrels	38	<b>Venue Hire</b>	
Elite Hygiene Services	39	<b>Nursing/Homecare</b>		The Manor Hall at Coalpit Heath	10
Liza & Sharon Domestic Cleaner	44	Blossom Fields Grove care	2	<b>Wills</b>	
<b>Complementary / Holistic Therapies</b>		<b>Opticians -</b>		Jane Holzgrawe Wills	31
Catherine Smart Hypnotherapy	23	Mike Harbord Opticians	23	<b>Window Cleaners</b>	
<b>Computer services: IT - Repair/help-</b>		Spec Savers	3	Dave James	39
Frampton Coterrell Computer group	16	<b>Painter / Decorator / Tiler -</b>		<b>Windows/Conservatories &amp; Doors -</b>	
Winterbourne Computer services	21	Alex Handywoman	42	Associated Windows	28
<b>Electrician -</b>		South Gloss decorator	44	Brunel Garage doors sales/repair	37
Millard Electrical services	38	<b>Pet Care / Cremation -</b>		Southern Plasticad	48
Gary Smart	42	Barkey's Doggie Daycare	42		

EDITOR'S NOTE: Winterbourne and Frampton Matters is independently published and delivered FREE to every home (c 7,000+) in Winterbourne, Frampton, Coalpitheath, Winterbourne Down and Moored. The views and opinions expressed are not necessarily those of the editors (unless it is a personal review of a service that we have participated in). We cannot vouch for every advertiser personally (although since starting in April 2009 we have used many of the services ourselves). Any feedback or experience is welcomed. We would like to thank all the advertisers who support this publication and therefore make it possible. Please return their support by utilising their services when and where you can. It is the advertiser's responsibility to ensure conformity with the Trade Descriptions Act 1975, Business, Advertisements Disclosure Order 1977, Sex Discriminations Act 1975 and the Consumer Credit Act 1974. We cannot be held responsible for misrepresentations in the adverts included. All artwork created by Matters Magazines must not be published in any other media without our permission. © Matters Magazines 2015 © Winterbourne & Frampton Matters 2015.

If your group, organisation or business would benefit from appearing in this magazine please call Wendy on 0771 574 5854



At Capricorn Plumbing, our qualified plumbers apply the same high standards of quality, integrity, tidiness and politeness in everything they do. And you can be sure of a fair price too. But don't take our word for it – call us for a free, no obligation quote today!

## You're in safe hands for...

- complete bathroom makeovers, including design, tiling and electrics
- boiler installations, servicing and landlord certification
- plumbing, gas and oil repairs and installations throughout your home
- a fast emergency call out service with no call out charge

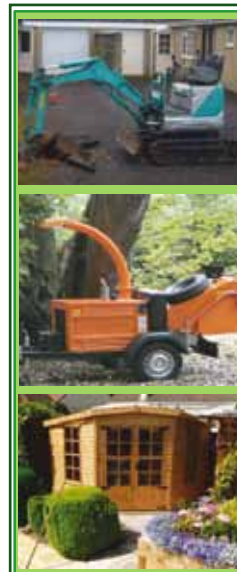


For complete reassurance ask to see our customer service charter.

**t: 01454 270179 m: 07971 602826**

73 Northover Road, Westbury on Trym, Bristol BS9 3LQ • [www.capricornplumbing.co.uk](http://www.capricornplumbing.co.uk)

Registered Office: Woodlands Grange, Woodlands Lane, Bradley Stoke, Bristol BS32 4JY



## C.J.P Landscaping



## & Tree Maintenance

NCH Arboriculture  
Qualified Bricklayer  
Full Public Liability Insurance  
Micro Digger and Chipper Facility

## Specialist in:

- Hedge Trimming
- Tree Work
- Stump Grinding
- Drives, Patios, Decking
- Fencing
- Raised Sleeper Beds.

All types of Landscaping and Drainage Undertaken.

Contact us on: Mobile - 07879845051 Landline – 01454 528 744  
Email - [parsons.com@hotmail.com](mailto:parsons.com@hotmail.com) Also find us on Facebook for our full portfolio



# Southern Plasticlad Ltd.

## WINDOWS, FASCIAS, CONSERVATORIES AND ROOFS



Conservatories to your  
Individual tastes and budget  
Georgian · Victorian · Lean-to  
OR

ALL NEW **GUARDIAN** warm roof system



**Guardian**  
Warm Roof

*Flat Roof Problems?*

**RUBBERBOND**  
FLEECEBACK  
EPDM



We specialise in  
all types of roofing  
including pitched  
roofing.

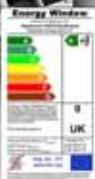
We can offer a  
number of different  
styles of roof  
tile or simply  
replace the  
existing tiles



Composite Doors  
Available in a variety of colours  
and Designs  
Giving the appearance of a solid door

**Visage**

Double glazed windows and Doors  
upto A+9 Rated  
Contemporary or Traditional  
Choice of colours · Range of Styles



At last a proven permanent solution  
with RubberBond EPDM  
Proven to last over 50 years

PVCu Solid · Replacement Fascias  
Soil Stacks and Cladding  
Guttering · Soffits  
Choice Of Colours · Range of Styles



**FENSA**

Registered Company 30873



VISIT US TODAY FOR A GREAT BARGAIN!

[sales@southernplasticlad.co.uk](mailto:sales@southernplasticlad.co.uk)  
[www.southernplasticlad.co.uk](http://www.southernplasticlad.co.uk)

**SHOWROOM OPEN**  
MON-FRI 9am-5pm SAT 9am-12pm

**Freephone 0800 542 6066**

Unit 4 Ram Hill Business Park  
Ram Hill, Coalpit Heath BS37 2TX

**Telephone 01454 777 732**